

# Revised Labour Force Survey Estimates: January 1989 to January 1994

## Introduction

Labour force survey estimates for the period January 1989 to January 1994 have been revised. The revisions take into account amended population estimates based on the results of the 1991 Census of Population and Housing.

Revised estimates for principal labour force survey series were first presented in the February 1994 issue of *The Labour Force Australia, Preliminary* (6202.0). The Appendix to the February 1994 issue of *The Labour Force, Australia*, (6203.0) also contained revised estimates for the period from January 1989 onwards.

The revisions were necessary to ensure that comparisons of labour force survey estimates from February 1994 (based on 1991 Census population totals) with estimates for the period January 1989 to January 1994 (previously based on 1986 Census population totals) can be made on a sound basis. Such comparisons would otherwise be distorted by an unquantified effect due solely to a change in estimates of the population.

An examination of the revised estimates between June 1986 and June 1991 showed that the effects on labour force survey estimates for the period before January 1989 were inconsequential, and that no meaningful purpose would be served by publishing revised estimates for that period.

This paper examines the impact of the revised population totals on some of the main estimates produced from the survey.

## Population benchmarks

Labour Force Survey estimates of persons employed, unemployed and not in the labour force are calculated in such a way as to add to independently estimated counts (benchmarks) of the usually-resident civilian population aged 15 and over. The benchmarks are based on Census of Population and Housing data, adjusted for underenumeration and updated monthly for births, deaths, interstate migration and net permanent and long-term migration. Benchmarks are classified by State/Territory of usual residence, part of State of usual residence (metropolitan non-metropolitan), age and sex, which are known as benchmark cells.

Expansion factors or weights are applied to the sample responses to derive estimates that relate to the whole population in the scope of the survey. In essence, weights are calculated each month by dividing the population in each benchmark cell by the number of persons in the corresponding sample cell (with adjustments for persons enumerated away from their State of usual residence). Each sample respondent is then given a weight corresponding to the State/Territory of usual residence, part of State of usual residence, age and sex cell.

Estimates of the total number of persons in the population with a certain characteristic are formed by summing the weights of the persons in the sample with that characteristic. The weighting procedure reduces sampling variability by ensuring that estimates conform to the benchmark

distribution of the population by age, sex and geographic area while at the same time automatically compensating and adjusting for any underenumeration or non-response in the survey.

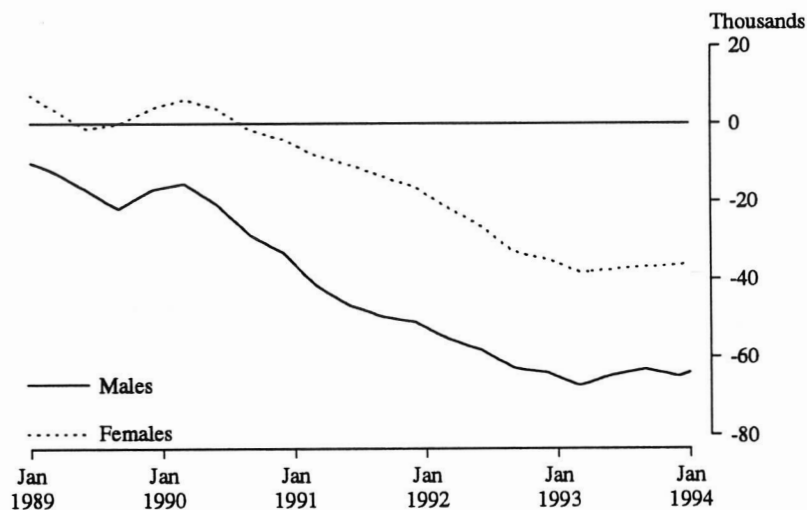
### Revision of estimates

Survey estimates are not revised for the usually small amendments of population benchmarks arising from new data on deaths and overseas and internal migration. Revisions are made, however, after each Census of Population and Housing, and when population estimation bases are reviewed. These revisions affect original, seasonally adjusted and trend estimates. The last such revision was made in February 1989 to take account of the results of the 1986 Census of Population and Housing, which affected all the monthly estimates from January 1984 to January 1989.

### Changes in population benchmarks

The post-1991 Census revision generally resulted in downward adjustments to population estimates. The male population was revised downwards by 10,000 in January 1989 and by 63,900 in January 1994 whereas the female population increased by 7,300 in January 1989, falling by 36,100 in January 1994.

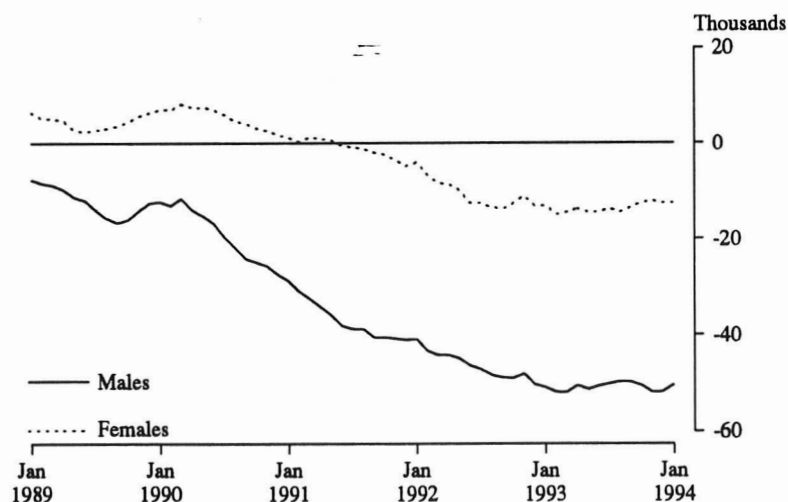
DIAGRAM 1: CHANGE IN BENCHMARKS



### Changes in employment estimates

Estimates of employed males were reduced by 7,200 in January 1989 and by 50,300 in January 1994. In contrast, estimates of employed females increased by 6,400 in January 1989 but decreased by 12,600 in January 1994.

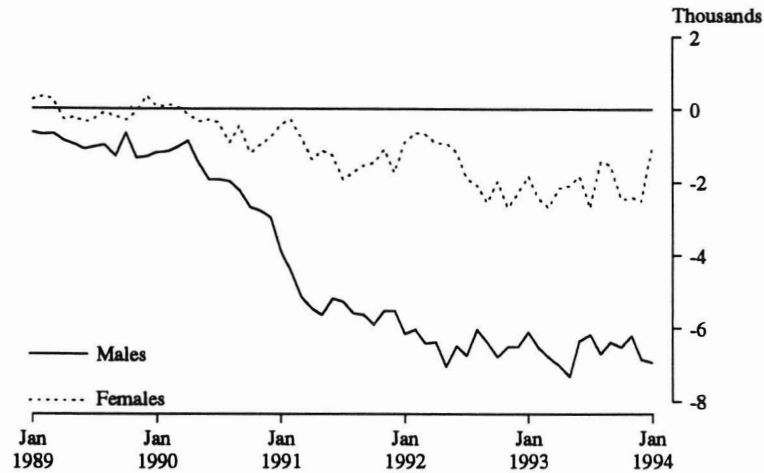
DIAGRAM 2: CHANGE IN EMPLOYMENT LEVELS



## Changes in unemployment estimates

Changes in male unemployment levels fluctuated from -600 in January 1989 to -7,300 in May 1993 and -6,900 in January 1994. Female unemployment estimates were adjusted upwards by 300 in January 1989. The largest difference for females was -2,700 in March and July 1993, dropping to -1,000 by January 1994.

DIAGRAM 3: CHANGE IN UNEMPLOYMENT LEVELS



## Percentage change in labour force categories

Diagrams 4 and 5 illustrate the relationship between the percentage change in the labour force categories of the civilian population. In percentage terms, the reduction in male benchmarks is reflected more in the employment and unemployment categories rather than in the not in the labour force category. In comparison, the downward revision to female benchmarks resulted in downward revisions that were marginally largest in the not in the labour force category.

DIAGRAM 4: PERCENTAGE CHANGE IN LABOUR FORCE COMPONENTS  
MALES

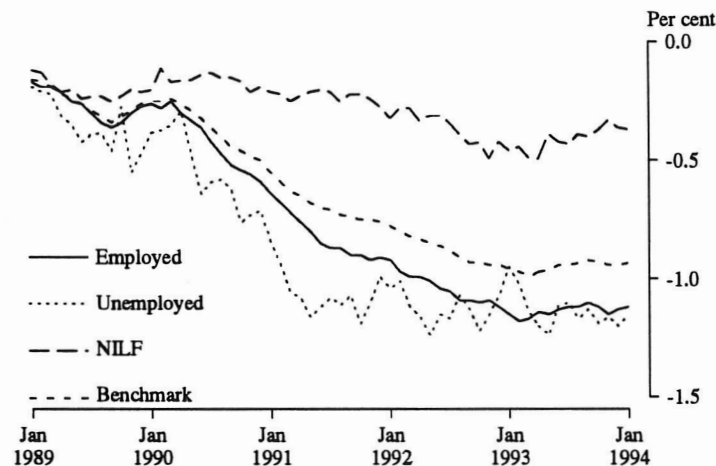
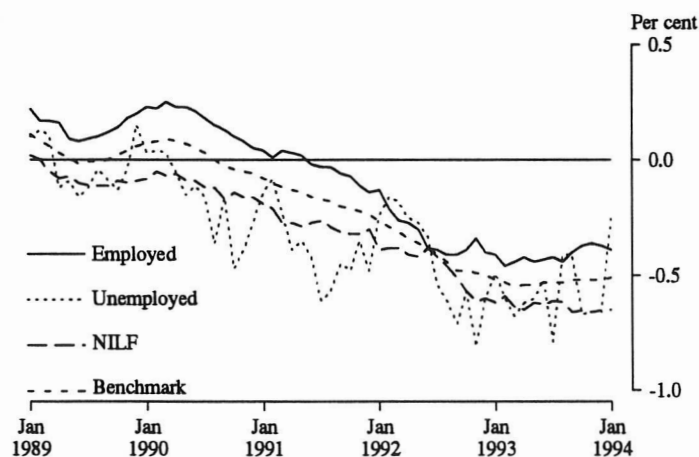


DIAGRAM 5: PERCENTAGE CHANGE IN LABOUR FORCE COMPONENTS  
FEMALES



**Related publications**

The following publications which related to the labour force are available on request:

*The Labour Force, Australia, Preliminary* (6202.0) — issued monthly

*The Labour Force, Australia* (6203.0) — issued monthly

*Labour Statistics, Australia* (6101.0) — issued annually

Information Paper: *Questionnaires Used in the Labour Force Survey* (6232.0)

Information Paper: *Labour Force Survey — Sample Design* (6269.0)

Current publications produced by the ABS are listed in the *Catalogue of Publications and Products, Australia* (1101.0). The ABS also issues, on Tuesday and Fridays, a *Publications Advice* (1105.0) which lists publications to be released in the next few days. The Catalogue and Publications Advice are available from any ABS office.

**Unpublished statistics**

In some cases, the ABS can also make available information which is not published. This information may be made available in a number of media such as floppy disk, microfiche, and customised reports. In general, a charge is made for providing unpublished information. Inquires should be made to Sylvia Sajler on Canberra (06) 252 6525 or any ABS office.





TABLE 3. LABOUR FORCE STATUS OF CIVILIAN POPULATION AGED 15 AND OVER  
DIFFERENCE ('000), 1991 CENSUS-BASED MINUS 1986 CENSUS-BASED DATA  
AUSTRALIA

Month	Employed		Unemployed				Labour force	Not in labour force	Civilian population aged 15 and over	Unemployment rate —percentage points—	Participation rate	
	Full-time workers	Part-time workers	Looking for full-time work		Looking for part-time work —'000—							
			Aged 15-19 looking for first job	Total								
	Total	Total	Total	Total	Total							
1989 —												
January	-2.9	1.9	-1.0	-0.1	-0.3	-0.1	-0.4	-1.4	-1.3	-2.7	..	..
February	-4.6	1.5	-3.1	0.1	-0.4	0.1	-0.3	-3.5	-2.2	-5.7	..	..
March	-5.1	1.5	-3.6	-0.1	-0.3	-0.1	-0.4	-4.0	-4.6	-8.6	..	..
April	-6.3	1.4	-4.8	-0.1	-0.8	-0.3	-1.1	-6.0	-5.8	-11.8	..	..
May	-8.4	..	-8.4	0.1	-0.9	-0.3	-1.2	-9.5	-5.4	-14.9	..	..
June	-9.3	-0.2	-9.4	..	-1.2	-0.3	-1.5	-10.9	-7.2	-18.1	..	..
July	-11.0	..	-11.0	-0.1	-1.0	-0.2	-1.3	-12.3	-7.1	-19.4	..	..
August	-12.1	-0.1	-12.2	0.1	-1.0	..	-1.0	-13.3	-7.3	-20.6	..	..
September	-13.0	0.2	-12.8	-0.1	-1.3	-0.2	-1.5	-14.3	-7.6	-21.9	..	..
October	-11.0	-0.3	-11.3	-0.1	-1.1	0.1	-0.9	-12.2	-6.7	-18.9	..	..
November	-9.0	0.8	-8.3	-0.1	-1.2	-0.2	-1.4	-9.7	-6.3	-16.0	..	..
December	-7.1	1.0	-6.0	..	-1.2	0.2	-1.0	-7.0	-6.1	-13.0	..	..
1990 —												
January	-6.2	1.3	-4.9	..	-1.3	0.2	-1.1	-6.0	-5.8	-11.8	..	..
February	-7.5	1.5	-6.0	-0.2	-1.1	0.1	-1.0	-7.0	-3.5	-10.5	..	..
March	-6.7	3.4	-3.3	-0.2	-1.2	0.2	-1.0	-4.3	-4.9	-9.3	..	..
April	-9.1	2.8	-6.3	-0.1	-1.1	0.1	-1.0	-7.3	-4.6	-11.9	..	..
May	-10.0	2.4	-7.5	-0.2	-2.0	0.2	-1.8	-9.3	-5.2	-14.5	..	..
June	-11.7	1.9	-9.8	-0.5	-2.0	-0.2	-2.2	-11.9	-5.3	-17.2	..	..
July	-14.9	1.4	-13.5	-0.3	-2.6	-0.3	-2.3	-15.8	-5.9	-21.6	..	..
August	-18.2	1.3	-17.0	..	-2.6	-0.3	-2.9	-19.8	-6.2	-26.1	..	..
September	-20.5	0.6	-19.9	0.1	-2.3	-0.4	-2.7	-22.6	-7.9	-30.6	..	..
October	-22.5	0.9	-21.6	-0.1	-3.6	-0.2	-3.9	-25.5	-7.4	-32.9	..	..
November	-22.3	-0.5	-22.9	..	-3.3	-0.5	-3.8	-26.6	-8.5	-35.2	..	..
December	-24.9	-0.7	-25.6	-0.1	-3.8	..	-3.8	-29.4	-8.1	-37.5	..	..
1991 —												
January	-26.1	-1.4	-27.5	-0.1	-4.6	0.3	-4.3	-31.8	-9.8	-41.6	..	..
February	-28.8	-1.7	-30.6	-0.2	-4.7	..	-4.7	-35.3	-10.5	-45.7	..	..
March	-30.0	-1.1	-31.1	-0.3	-5.8	-0.1	-5.9	-37.1	-12.8	-49.9	..	..
April	-31.8	-1.5	-33.3	-0.3	-6.3	-0.5	-6.8	-40.1	-12.3	-52.4	..	..
May	-33.3	-1.8	-35.1	-0.3	-6.8	..	-6.8	-41.9	-13.0	-54.8	..	..
June	-36.0	-2.5	-38.6	-0.1	-6.1	-0.4	-6.4	-45.0	-12.5	-57.5	..	-0.1
July	-36.2	-3.4	-39.6	-0.2	-6.9	-0.3	-7.2	-46.7	-12.4	-59.1	..	-0.1
August	-37.3	-2.6	-39.8	-0.2	-7.1	-0.2	-7.3	-47.2	-14.1	-61.2	..	-0.1
September	-39.4	-3.0	-42.4	-0.1	-7.0	-0.2	-7.2	-49.6	-13.7	-63.3	..	-0.1
October	-39.1	-3.8	-42.8	-0.2	-6.9	-0.4	-7.3	-50.2	-14.4	-64.6	..	-0.1
November	-39.3	-5.0	-44.3	-0.1	-6.9	0.3	-6.6	-50.9	-15.1	-66.0	..	-0.1
December	-40.7	-5.1	-45.8	0.2	-7.1	-0.1	-7.3	-53.0	-14.3	-67.3	..	-0.1
1992 —												
January	-41.3	-3.6	-44.9	0.6	-7.1	0.1	-7.0	-51.9	-18.6	-70.5	..	-0.1
February	-44.3	-5.5	-49.8	0.3	-6.8	0.2	-6.7	-56.4	-17.3	-73.7	..	-0.1
March	-48.1	-4.4	-52.6	-0.1	-7.0	-0.1	-7.1	-59.7	-17.3	-76.9	..	-0.1
April	-47.9	-4.9	-52.8	-0.1	-7.3	..	-7.3	-60.1	-19.4	-79.5	..	-0.1
May	-49.0	-5.6	-54.6	-0.1	-8.6	0.6	-8.0	-62.6	-19.3	-81.9	..	-0.1
June	-51.2	-7.5	-58.8	0.1	-7.3	-0.4	-7.6	-66.4	-18.1	-84.5	..	-0.1
July	-52.0	-7.8	-59.7	0.1	-8.5	-0.1	-8.6	-68.4	-19.9	-88.3	..	-0.1
August	-53.8	-7.9	-61.7	0.1	-7.5	-0.7	-8.1	-69.8	-22.3	-92.1	..	-0.1
September	-54.9	-7.6	-62.5	..	-8.6	-0.4	-8.9	-71.5	-24.5	-96.0	..	-0.1
October	-54.1	-7.5	-61.6	0.3	-8.2	-0.6	-8.8	-70.4	-26.6	-97.0	..	-0.1
November	-51.7	-7.4	-59.1	..	-8.4	-0.8	-9.2	-68.3	-29.7	-98.0	..	..
December	-55.2	-8.0	-63.2	0.3	-7.9	-0.9	-8.8	-72.0	-27.0	-99.0	..	-0.1
1993 —												
January	-55.7	-8.2	-63.9	0.6	-7.5	-0.4	-7.9	-71.8	-29.4	-101.2	..	-0.1
February	-56.5	-10.1	-66.6	0.4	-8.4	-0.6	-9.0	-75.6	-27.8	-103.4	..	-0.1
March	-58.0	-8.3	-66.3	0.4	-8.7	-0.8	-9.5	-75.7	-29.9	-105.6	..	-0.1
April	-55.6	-8.6	-64.2	0.3	-8.8	-0.4	-9.2	-73.4	-31.0	-104.4	..	-0.1
May	-56.5	-9.2	-65.7	0.2	-8.3	-1.1	-9.4	-75.1	-28.1	-103.2	..	-0.1
June	-55.0	-9.8	-64.8	0.2	-7.3	-0.9	-8.2	-72.9	-29.1	-102.0	..	-0.1
July	-53.8	-10.0	-63.8	-0.2	-7.9	-0.9	-8.8	-72.6	-28.8	-101.4	..	-0.1
August	-52.9	-11.0	-64.0	0.1	-7.7	-0.4	-8.1	-72.1	-28.6	-100.7	..	-0.1
September	-52.9	-10.1	-63.1	0.4	-7.6	-0.3	-7.9	-71.0	-29.1	-100.1	..	-0.1
October	-53.7	-9.1	-62.8	-0.2	-8.5	-0.4	-9.0	-71.8	-28.7	-100.5	..	-0.1
November	-54.8	-9.3	-64.1	0.4	-8.2	-0.4	-8.6	-72.7	-28.3	-101.0	..	-0.1
December	-55.0	-9.3	-64.3	0.6	-8.5	-0.8	-9.3	-73.6	-27.8	-101.4	..	-0.1
1994 —												
January	-54.6	-8.4	-63.0	0.6	-8.3	0.4	-7.9	-70.9	-29.1	-100.0	..	-0.1

TABLE 4. LABOUR FORCE STATUS OF CIVILIAN POPULATION AGED 15 AND OVER  
DIFFERENCE (Per cent), 1991 CENSUS-BASED MINUS 1986 CENSUS-BASED DATA  
AUSTRALIA

Month	Employed			Unemployed				Labour force	Not in labour force	Civilian population aged 15 and over
	Full-time workers	Part-time workers	Total	Looking for full-time work		Looking for part-time work	Total			
				Aged 15-19 looking for first job	Total					
1989 —										
January	..	0.1	..	-0.1	-0.1	..	-0.1	..	..	..
February	-0.1	0.1	..	0.1	-0.1	0.1	-0.1	..	..	..
March	-0.1	0.1	..	-0.2	-0.1	-0.1	-0.1	..	-0.1	-0.1
April	-0.1	0.1	-0.1	-0.3	-0.2	-0.2	-0.2	-0.1	-0.1	-0.1
May	-0.1	..	-0.1	0.3	-0.2	-0.3	-0.2	-0.1	-0.1	-0.1
June	-0.1	..	-0.1	0.2	-0.3	-0.3	-0.3	-0.1	-0.1	-0.1
July	-0.2	..	-0.1	-0.3	-0.3	-0.2	-0.3	-0.1	-0.1	-0.1
August	-0.2	..	-0.2	0.2	-0.3	..	-0.2	-0.2	-0.1	-0.2
September	-0.2	..	-0.2	-0.3	-0.3	-0.2	-0.3	-0.2	-0.2	-0.2
October	-0.2	..	-0.1	-0.4	-0.3	0.1	-0.2	-0.1	-0.1	-0.1
November	-0.1	..	-0.1	-0.3	-0.3	-0.2	-0.3	-0.1	-0.1	-0.1
December	-0.1	0.1	-0.1	-0.1	-0.3	0.2	-0.2	-0.1	-0.1	-0.1
1990 —										
January	-0.1	0.1	-0.1	..	-0.3	0.2	-0.2	-0.1	-0.1	-0.1
February	-0.1	0.1	-0.1	-0.4	-0.2	..	-0.2	-0.1	-0.1	-0.1
March	-0.1	0.2	..	-0.6	-0.3	0.2	-0.2	..	-0.1	-0.1
April	-0.1	0.2	-0.1	-0.2	-0.3	0.1	-0.2	-0.1	-0.1	-0.1
May	-0.2	0.1	-0.1	-0.7	-0.5	0.2	-0.3	-0.1	-0.1	-0.1
June	-0.2	0.1	-0.1	-1.6	-0.5	-0.2	-0.4	-0.1	-0.1	-0.1
July	-0.2	0.1	-0.2	-1.0	-0.6	0.3	-0.4	-0.2	-0.1	-0.2
August	-0.3	0.1	-0.2	..	-0.5	-0.3	-0.5	-0.2	-0.1	-0.2
September	-0.3	..	-0.3	0.4	-0.5	-0.3	-0.4	-0.3	-0.2	-0.2
October	-0.4	..	-0.3	-0.4	-0.8	-0.2	-0.6	-0.3	-0.1	-0.3
November	-0.4	..	-0.3	..	-0.6	-0.4	-0.6	-0.3	-0.2	-0.3
December	-0.4	..	-0.3	-0.1	-0.7	..	-0.5	-0.3	-0.2	-0.3
1991 —										
January	-0.4	-0.1	-0.4	-0.1	-0.7	0.2	-0.6	-0.4	-0.2	-0.3
February	-0.5	-0.1	-0.4	-0.4	-0.7	..	-0.6	-0.4	-0.2	-0.3
March	-0.5	-0.1	-0.4	-0.7	-0.9	-0.1	-0.7	-0.4	-0.3	-0.4
April	-0.5	-0.1	-0.4	-0.6	-0.9	-0.3	-0.8	-0.5	-0.3	-0.4
May	-0.6	-0.1	-0.4	-0.6	-1.0	..	-0.8	-0.5	-0.3	-0.4
June	-0.6	-0.1	-0.5	-0.2	-0.9	-0.3	-0.8	-0.5	-0.3	-0.4
July	-0.6	-0.2	-0.5	-0.5	-1.0	-0.2	-0.9	-0.5	-0.2	-0.4
August	-0.6	-0.1	-0.5	-0.5	-1.0	-0.1	-0.9	-0.6	-0.3	-0.4
September	-0.7	-0.2	-0.5	-0.3	-1.0	-0.1	-0.8	-0.6	-0.3	-0.5
October	-0.6	-0.2	-0.6	-0.4	-1.0	-0.3	-0.9	-0.6	-0.3	-0.5
November	-0.7	-0.3	-0.6	-0.1	-1.0	0.2	-0.8	-0.6	-0.3	-0.5
December	-0.7	-0.3	-0.6	0.2	-0.9	-0.1	-0.8	-0.6	-0.3	-0.5
1992 —										
January	-0.7	-0.2	-0.6	0.6	-0.9	..	-0.7	-0.6	-0.4	-0.5
February	-0.8	-0.3	-0.6	0.3	-0.8	0.1	-0.7	-0.6	-0.3	-0.5
March	-0.8	-0.3	-0.7	-0.1	-0.9	..	-0.8	-0.7	-0.3	-0.6
April	-0.8	-0.3	-0.7	-0.1	-0.9	..	-0.8	-0.7	-0.4	-0.6
May	-0.8	-0.3	-0.7	-0.1	-1.1	0.5	-0.9	-0.7	-0.4	-0.6
June	-0.9	-0.4	-0.8	0.1	-0.9	-0.3	-0.8	-0.8	-0.4	-0.6
July	-0.9	-0.4	-0.8	0.1	-1.1	-0.1	-0.9	-0.8	-0.4	-0.6
August	-0.9	-0.4	-0.8	0.2	-1.0	-0.5	-0.9	-0.8	-0.4	-0.7
September	-0.9	-0.4	-0.8	..	-1.1	-0.2	-1.0	-0.8	-0.5	-0.7
October	-0.9	-0.4	-0.8	0.6	-1.1	-0.4	-1.0	-0.8	-0.5	-0.7
November	-0.9	-0.4	-0.8	0.1	-1.1	-0.6	-1.0	-0.8	-0.6	-0.7
December	-0.9	-0.4	-0.8	0.4	-1.0	-0.5	-0.9	-0.8	-0.5	-0.7
1993 —										
January	-0.9	-0.5	-0.8	0.7	-0.8	-0.3	-0.8	-0.8	-0.6	-0.7
February	-1.0	-0.6	-0.9	0.5	-0.9	-0.4	-0.8	-0.9	-0.5	-0.8
March	-1.0	-0.5	-0.9	0.6	-1.1	-0.4	-1.0	-0.9	-0.6	-0.8
April	-0.9	-0.5	-0.8	0.5	-1.1	-0.3	-1.0	-0.8	-0.6	-0.8
May	-1.0	-0.5	-0.8	0.3	-1.0	-0.8	-1.0	-0.9	-0.5	-0.7
June	-0.9	-0.5	-0.8	0.3	-0.9	-0.6	-0.9	-0.8	-0.6	-0.7
July	-0.9	-0.5	-0.8	-0.5	-1.0	-0.7	-1.0	-0.8	-0.5	-0.7
August	-0.9	-0.6	-0.8	0.2	-1.0	-0.3	-0.9	-0.8	-0.5	-0.7
September	-0.9	-0.5	-0.8	0.7	-1.0	-0.2	-0.8	-0.8	-0.6	-0.7
October	-0.9	-0.5	-0.8	-0.3	-1.1	-0.3	-1.0	-0.8	-0.5	-0.7
November	-0.9	-0.5	-0.8	0.7	-1.1	-0.3	-0.9	-0.8	-0.5	-0.7
December	-0.9	-0.5	-0.8	0.7	-1.1	-0.5	-1.0	-0.8	-0.5	-0.7
1994 —										
January	-0.9	-0.5	-0.8	0.6	-1.0	0.3	-0.8	-0.8	-0.6	-0.7



TABLE 1. LABOUR FORCE STATUS OF CIVILIAN POPULATION AGED 15 AND OVER  
ESTIMATES BASED ON 1986 CENSUS BENCHMARKS  
NEW SOUTH WALES

Month	Employed		Unemployed					Labour force	Not in labour force	Civilian population aged 15 and over	Unemployment rate — per cent —	Participation rate
	Full-time workers	Part-time workers	Total	Looking for full-time work		Looking for part-time work						
				Aged 15-19 looking for first job	Total							
— '000 —												
1989 —												
January	2,055.5	432.9	2,488.4	23.3	169.6	37.4	207.0	2,695.4	1,759.2	4,454.6	7.7	60.5
February	2,081.0	458.6	2,539.5	18.1	158.9	39.1	198.0	2,737.5	1,723.0	4,460.6	7.2	61.4
March	2,070.3	484.2	2,554.5	10.2	150.2	43.1	193.3	2,747.9	1,718.8	4,466.6	7.0	61.5
April	2,079.3	491.4	2,570.8	9.7	140.0	36.7	176.7	2,747.4	1,724.1	4,471.6	6.4	61.4
May	2,082.6	503.8	2,586.4	10.8	149.2	37.1	186.3	2,772.7	1,703.9	4,476.5	6.7	61.9
June	2,091.1	492.7	2,583.8	11.5	136.0	31.7	167.6	2,751.5	1,730.0	4,481.5	6.1	61.4
July	2,102.3	502.6	2,604.8	8.8	140.3	32.3	172.6	2,777.5	1,708.3	4,485.8	6.2	61.9
August	2,080.6	500.0	2,580.6	6.9	129.9	33.8	163.7	2,744.3	1,745.7	4,490.0	6.0	61.1
September	2,103.5	524.5	2,628.0	7.2	136.2	38.3	174.5	2,802.5	1,691.8	4,494.3	6.2	62.4
October	2,101.6	511.8	2,613.4	8.8	118.2	33.6	151.8	2,765.3	1,731.3	4,496.6	5.5	61.5
November	2,106.3	526.6	2,633.0	6.6	117.7	27.1	144.9	2,777.8	1,721.1	4,498.9	5.2	61.7
December	2,131.7	521.4	2,653.0	16.2	134.5	27.7	162.2	2,815.2	1,686.0	4,501.2	5.8	62.5
1990 —												
January	2,081.4	476.3	2,557.8	22.1	156.4	29.1	185.5	2,743.3	1,761.3	4,504.5	6.8	60.9
February	2,083.3	502.5	2,585.8	15.0	160.2	38.3	198.5	2,784.2	1,723.7	4,507.9	7.1	61.8
March	2,092.4	530.0	2,622.4	10.2	138.2	43.2	181.3	2,803.8	1,707.4	4,511.2	6.5	62.1
April	2,072.9	540.7	2,613.6	8.4	136.6	35.2	171.8	2,785.4	1,731.0	4,516.4	6.2	61.7
May	2,095.3	538.1	2,633.5	8.6	140.0	34.7	174.7	2,808.1	1,713.4	4,521.6	6.2	62.1
June	2,099.8	534.1	2,633.8	9.5	138.3	32.2	170.5	2,804.4	1,722.4	4,526.7	6.1	61.9
July	2,135.1	514.8	2,650.0	10.6	147.3	34.1	181.4	2,831.4	1,700.5	4,531.9	6.4	62.5
August	2,080.4	520.5	2,600.9	8.8	143.6	34.6	178.2	2,779.1	1,757.9	4,537.0	6.4	61.3
September	2,115.8	534.5	2,650.3	7.3	152.8	41.2	193.9	2,844.3	1,697.8	4,542.1	6.8	62.6
October	2,094.0	528.0	2,622.0	9.0	141.5	33.6	175.1	2,797.2	1,751.2	4,548.4	6.3	61.5
November	2,097.6	532.6	2,630.2	13.5	152.1	34.6	186.7	2,816.9	1,737.7	4,554.6	6.6	61.8
December	2,145.9	528.7	2,674.6	25.5	169.3	40.0	209.3	2,883.9	1,677.0	4,560.9	7.3	63.2
1991 —												
January	2,108.2	463.0	2,571.1	23.4	191.4	36.8	228.1	2,799.3	1,767.0	4,566.3	8.1	61.3
February	2,084.5	515.5	2,600.0	20.6	196.2	47.0	243.2	2,843.2	1,728.4	4,571.6	8.5	62.2
March	2,059.8	551.0	2,610.8	14.3	200.2	50.3	250.5	2,861.3	1,715.8	4,577.0	8.8	62.5
April	2,079.5	548.8	2,628.3	14.7	200.2	45.3	245.5	2,873.8	1,708.6	4,582.5	8.5	62.7
May	2,081.0	551.5	2,632.5	14.6	199.2	42.1	241.3	2,873.8	1,714.1	4,587.9	8.4	62.6
June	2,065.7	537.7	2,603.4	13.9	191.8	32.1	223.9	2,827.3	1,766.0	4,593.3	7.9	61.5
July	2,047.6	527.1	2,574.7	15.8	208.4	35.4	243.9	2,818.6	1,779.9	4,598.5	8.6	61.3
August	2,047.8	534.3	2,582.1	15.4	216.6	38.8	255.4	2,837.5	1,766.1	4,603.6	9.0	61.6
September	2,054.4	550.0	2,604.4	14.8	229.9	50.8	280.8	2,885.2	1,723.6	4,608.8	9.7	62.6
October	2,067.1	503.2	2,570.3	12.3	214.2	41.7	255.9	2,826.2	1,788.3	4,614.4	9.0	61.2
November	2,012.5	564.4	2,576.8	18.2	228.8	36.2	265.1	2,841.9	1,778.2	4,620.1	9.3	61.5
December	2,055.3	549.5	2,604.8	29.6	247.7	46.6	294.3	2,899.0	1,726.7	4,625.8	10.1	62.7
1992 —												
January	2,026.9	508.6	2,535.5	30.9	259.3	43.5	302.8	2,838.3	1,792.6	4,630.9	10.7	61.3
February	2,039.8	533.5	2,573.3	26.7	262.6	49.8	312.4	2,885.7	1,750.2	4,636.0	10.8	62.3
March	2,044.6	565.0	2,609.6	22.4	238.3	50.3	288.6	2,898.2	1,742.9	4,641.1	10.0	62.4
April	2,030.1	576.7	2,606.7	20.5	239.4	42.2	281.6	2,888.4	1,756.8	4,645.2	9.8	62.2
May	2,020.1	581.0	2,601.1	18.6	241.4	42.3	283.7	2,884.9	1,764.5	4,649.3	9.8	62.0
June	2,003.6	583.8	2,587.5	17.7	240.3	45.6	286.0	2,873.4	1,780.0	4,653.5	9.9	61.8
July	2,031.3	576.2	2,607.5	19.3	251.2	44.7	295.8	2,903.4	1,754.9	4,658.3	10.2	62.3
August	1,972.2	599.3	2,571.5	19.7	258.1	45.3	303.3	2,874.8	1,788.3	4,663.1	10.5	61.6
September	2,002.3	593.8	2,596.1	19.4	255.5	48.4	303.9	2,900.0	1,767.9	4,668.0	10.5	62.1
October	1,984.5	587.5	2,572.0	19.0	256.4	48.1	304.5	2,876.6	1,795.6	4,672.2	10.6	61.6
November	1,949.0	572.8	2,521.9	20.1	247.1	42.1	289.2	2,811.1	1,865.3	4,676.4	10.3	60.1
December	2,007.2	554.6	2,561.7	29.0	280.9	43.6	324.5	2,886.3	1,794.4	4,680.6	11.2	61.7
1993 —												
January	2,014.3	511.4	2,525.7	34.6	295.6	38.8	334.4	2,860.1	1,825.0	4,685.1	11.7	61.0
February	1,999.6	521.2	2,520.8	34.0	308.3	51.0	359.4	2,880.2	1,809.4	4,689.6	12.5	61.4
March	1,980.5	553.9	2,534.4	20.3	275.3	55.8	331.1	2,865.5	1,828.6	4,694.0	11.6	61.0
April	1,974.4	545.8	2,520.2	20.1	253.9	49.8	303.7	2,824.0	1,872.8	4,696.8	10.8	60.1
May	1,985.5	574.5	2,560.0	16.4	253.1	44.7	297.8	2,857.8	1,841.7	4,699.4	10.4	60.8
June	1,985.3	579.1	2,564.4	16.2	258.9	44.0	302.8	2,867.2	1,834.9	4,702.1	10.6	61.0
July	1,995.2	568.6	2,563.8	16.9	248.2	41.3	289.5	2,853.4	1,852.0	4,705.4	10.1	60.6
August	1,968.7	576.5	2,545.1	17.2	252.9	46.6	299.5	2,844.7	1,864.0	4,708.6	10.5	60.4
September	1,987.3	605.6	2,592.9	15.3	255.9	50.4	306.3	2,899.2	1,812.7	4,711.9	10.6	61.5
October	2,015.5	579.5	2,595.0	15.4	251.9	53.0	305.0	2,900.0	1,815.5	4,715.5	10.5	61.5
November	2,017.9	589.3	2,607.3	18.0	247.3	45.4	292.8	2,900.0	1,819.1	4,719.1	10.1	61.4
December	2,042.3	584.0	2,626.3	28.2	263.0	49.7	312.7	2,939.0	1,783.7	4,722.7	10.6	62.2
1994 —												
January	2,013.2	547.1	2,560.3	32.0	274.6	47.2	321.8	2,882.1	1,843.7	4,725.8	11.2	61.0



TABLE 3. LABOUR FORCE STATUS OF CIVILIAN POPULATION AGED 15 AND OVER  
DIFFERENCE ('000), 1991 CENSUS-BASED MINUS 1986 CENSUS-BASED DATA  
NEW SOUTH WALES

Month	Employed		Unemployed					Labour force	Not in labour force	Civilian population aged 15 and over	Unemployment rate —percentage	Participation rate —points
	Full-time workers	Part-time workers	Total	Looking for full-time work		Looking for part-time work	Total					
				Aged 15-19 looking for first job	Total							
					—'000—							
1989 —												
January	8.7	1.2	9.9	..	0.8	0.2	1.0	11.0	1.8	12.8	..	0.1
February	8.2	1.0	9.1	..	0.9	0.2	1.0	10.2	1.2	11.4	..	0.1
March	7.4	1.1	8.5	..	0.7	0.1	0.9	9.4	0.6	10.0	..	0.1
April	7.1	1.0	8.1	..	0.6	..	0.6	8.7	0.5	9.2	..	0.1
May	6.2	0.8	7.0	..	0.5	0.1	0.6	7.6	0.7	8.3	..	0.1
June	6.5	0.7	7.2	..	0.3	..	0.3	7.5	..	7.5	..	0.1
July	6.8	0.3	7.1	..	0.4	0.1	0.5	7.6	0.2	7.8	..	0.1
August	6.8	0.6	7.4	..	0.2	0.1	0.3	7.7	0.4	8.1	..	0.1
September	6.6	1.3	7.9	..	0.4	0.1	0.4	8.3	0.1	8.4	..	0.1
October	8.4	1.1	9.5	-0.1	0.4	0.3	0.7	10.2	1.0	11.2	..	0.1
November	10.7	1.3	11.9	..	0.5	0.1	0.6	12.6	1.4	13.9	..	0.1
December	12.5	1.3	13.8	..	0.7	0.4	1.1	14.9	1.8	16.7	..	0.1
1990 —												
January	12.9	1.6	14.5	-0.1	0.8	0.3	1.1	15.6	2.3	18.0	..	0.1
February	13.0	1.7	14.7	-0.1	0.8	0.2	1.0	15.7	3.5	19.2	..	0.1
March	13.6	2.7	16.3	-0.1	1.0	0.4	1.4	17.7	2.8	20.4	..	0.1
April	13.7	2.0	15.8	..	0.9	0.5	1.4	17.2	2.7	19.9	..	0.1
May	13.8	2.4	16.2	..	0.6	0.4	1.0	17.2	2.2	19.4	..	0.1
June	12.9	2.5	15.5	-0.1	1.0	0.2	1.2	16.7	2.2	18.8	..	0.1
July	12.0	2.2	14.2	-0.1	..	0.4	0.5	14.7	3.1	17.8	..	0.1
August	9.8	2.5	12.2	..	0.6	0.1	0.7	12.9	3.8	16.8	..	0.1
September	9.0	2.3	11.2	-0.1	0.5	..	0.5	11.7	4.0	15.8	..	..
October	8.6	2.6	11.2	-0.1	0.2	..	0.2	11.3	3.5	14.8	..	..
November	8.8	1.9	10.6	-0.1	0.4	..	0.4	11.0	2.8	13.8	..	0.1
December	8.4	1.5	9.8	-0.1	0.1	0.4	0.5	10.4	2.4	12.8	..	..
1991 —												
January	8.4	1.1	9.5	-0.1	0.5	0.2	0.7	10.2	2.0	12.2	..	0.1
February	7.7	1.2	8.9	-0.1	0.8	0.3	1.1	10.0	1.5	11.5	..	0.1
March	7.8	1.7	9.4	-0.1	0.5	0.3	0.8	10.3	0.7	10.9	..	0.1
April	7.3	1.7	8.9	-0.1	..	0.2	0.2	9.1	1.1	10.2	..	0.1
May	6.8	2.0	8.8	-0.1	0.1	0.4	0.5	9.3	0.3	9.5	..	0.1
June	5.8	1.8	7.6	..	0.4	..	0.4	8.0	0.8	8.8	..	0.1
July	5.9	0.9	6.9	..	..	0.1	0.1	7.0	1.4	8.4	..	..
August	5.6	1.6	7.2	-0.1	-0.3	0.1	-0.2	7.0	0.7	7.8	..	..
September	5.2	1.6	6.8	..	0.1	0.1	0.1	7.0	0.1	7.1	..	0.1
October	5.7	0.9	6.6	0.1	-0.2	0.1	..	6.5	-0.2	6.4	..	0.1
November	5.1	1.0	6.1	0.1	-0.1	0.3	0.2	6.3	-0.7	5.6	..	0.1
December	4.9	0.1	5.1	..	-0.2	0.3	0.1	5.2	-0.3	4.9	..	..
1992 —												
January	4.5	0.5	5.0	0.1	0.1	0.3	0.4	5.5	-1.6	3.9	..	0.1
February	4.3	0.3	4.6	-0.1	0.1	0.3	0.4	5.1	-2.2	2.9	..	0.1
March	2.7	0.7	3.4	-0.2	..	..	..	3.4	-1.5	1.9	..	..
April	3.0	0.6	3.6	-0.1	0.5	-0.1	0.4	4.0	-2.5	1.4	..	0.1
May	3.5	0.4	3.9	0.1	-0.5	0.4	..	3.8	-2.9	1.0	..	0.1
June	3.0	0.1	3.1	0.1	..	..	0.1	3.1	-2.6	0.5	..	0.1
July	1.7	0.6	2.3	..	-0.7	..	-0.7	1.6	-2.5	-0.9	..	..
August	1.0	0.3	1.3	0.1	-0.1	0.1	..	1.2	-3.6	-2.3	..	0.1
September	1.1	0.6	1.8	..	-0.9	0.1	-0.8	0.9	-4.7	-3.8	..	0.1
October	0.4	1.1	1.4	0.1	-0.6	-0.1	-0.8	0.7	-5.2	-4.5	..	0.1
November	2.1	0.1	2.2	..	-0.5	-0.3	-0.8	1.4	-6.7	-5.3	..	0.1
December	..	..	..	..	-0.9	-0.1	-1.1	-1.1	-5.0	-6.1	..	0.1
1993 —												
January	-0.8	-0.3	-1.1	0.1	-0.1	..	-0.1	-1.2	-5.7	-6.9	..	0.1
February	-0.1	-0.9	-1.1	0.1	-1.2	0.2	-0.9	-2.0	-5.7	-7.7	..	0.1
March	0.3	0.4	0.6	0.2	-1.1	-0.1	-1.2	-0.6	-7.9	-8.5	..	0.1
April	0.8	..	0.8	..	-1.6	0.1	-1.4	-0.7	-7.3	-7.9	..	0.1
May	-0.7	0.3	-0.4	..	-1.4	-0.4	-1.8	-2.2	-5.1	-7.3	..	..
June	0.7	-0.7	..	-0.1	-0.9	-0.2	-1.1	-1.2	-5.5	-6.6	..	0.1
July	0.8	-1.6	-0.8	-0.3	-1.2	-0.1	-1.3	-2.1	-4.1	-6.2	..	..
August	1.4	-1.7	-0.3	-0.1	-1.1	0.2	-0.9	-1.2	-4.6	-5.8	..	..
September	2.4	-0.8	1.6	-0.1	-1.0	..	-1.0	0.6	-5.9	-5.3	..	0.1
October	1.6	-0.8	0.8	-0.2	-1.4	-0.2	-1.5	-0.7	-4.3	-5.0	..	..
November	2.5	-1.1	1.4	..	-1.8	0.1	-1.7	-0.3	-4.4	-4.7	-0.1	0.1
December	3.7	-1.2	2.5	-0.2	-2.4	..	-2.4	0.1	-4.4	-4.3	-0.1	0.1
1994 —												
January	3.1	0.6	3.7	-0.1	-2.2	0.5	-1.7	2.0	-5.8	-3.8	-0.1	0.1

TABLE 4. LABOUR FORCE STATUS OF CIVILIAN POPULATION AGED 15 AND OVER  
DIFFERENCE (Per cent), 1991 CENSUS-BASED MINUS 1986 CENSUS-BASED DATA  
NEW SOUTH WALES

Month	Employed			Unemployed				Labour force	Not in labour force	Civilian population aged 15 and over
	Full-time workers	Part-time workers	Total	Looking for full-time work		Looking for part-time work	Total			
				Aged 15-19 looking for first job	Total					
1989 —										
January	0.4	0.3	0.4	..	0.5	0.6	0.5	0.4	0.1	0.3
February	0.4	0.2	0.4	0.1	0.5	0.4	0.5	0.4	0.1	0.3
March	0.4	0.2	0.3	0.3	0.5	0.3	0.4	0.3	..	0.2
April	0.3	0.2	0.3	-0.2	0.4	-0.1	0.3	0.3	..	0.2
May	0.3	0.2	0.3	0.4	0.3	0.2	0.3	0.3	..	0.2
June	0.3	0.1	0.3	0.4	0.2	-0.1	0.1	0.3	..	0.2
July	0.3	0.1	0.3	..	0.3	0.3	0.3	0.3	..	0.2
August	0.3	0.1	0.3	-0.1	0.2	0.3	0.2	0.3	..	0.2
September	0.3	0.2	0.3	-0.1	0.3	0.2	0.3	0.3	..	0.2
October	0.4	0.2	0.4	-1.1	0.3	0.9	0.4	0.4	0.1	0.3
November	0.5	0.2	0.4	-0.3	0.4	0.5	0.4	0.4	0.1	0.3
December	0.6	0.3	0.5	-0.2	0.5	1.5	0.7	0.5	0.1	0.4
1990 —										
January	0.6	0.3	0.6	-0.4	0.5	1.2	0.6	0.6	0.1	0.4
February	0.6	0.3	0.6	-0.6	0.5	0.6	0.5	0.6	0.2	0.4
March	0.6	0.5	0.6	-0.8	0.7	0.9	0.8	0.6	0.2	0.4
April	0.7	0.4	0.6	-0.2	0.7	1.3	0.8	0.6	0.2	0.4
May	0.7	0.4	0.6	0.1	0.5	1.0	0.6	0.6	0.1	0.4
June	0.6	0.5	0.6	-0.8	0.7	0.7	0.7	0.6	0.1	0.4
July	0.6	0.4	0.5	-0.5	..	1.3	0.3	0.5	0.2	0.4
August	0.5	0.5	0.5	-0.5	0.4	0.3	0.4	0.5	0.2	0.4
September	0.4	0.4	0.4	-1.9	0.3	..	0.3	0.4	0.2	0.3
October	0.4	0.5	0.4	-1.3	0.1	-0.1	0.1	0.4	0.2	0.3
November	0.4	0.3	0.4	-0.8	0.3	..	0.2	0.4	0.2	0.3
December	0.4	0.3	0.4	-0.5	0.1	1.1	0.3	0.4	0.1	0.3
1991 —										
January	0.4	0.2	0.4	-0.2	0.3	0.5	0.3	0.4	0.1	0.3
February	0.4	0.2	0.3	-0.6	0.4	0.7	0.4	0.3	0.1	0.3
March	0.4	0.3	0.4	-0.9	0.3	0.5	0.3	0.4	..	0.2
April	0.3	0.3	0.3	-0.9	..	0.5	0.1	0.3	0.1	0.2
May	0.3	0.4	0.3	-0.8	0.1	0.9	0.2	0.3	..	0.2
June	0.3	0.3	0.3	-0.2	0.2	0.1	0.2	0.3	..	0.2
July	0.3	0.2	0.3	-0.1	..	0.3	..	0.3	0.1	0.2
August	0.3	0.3	0.3	-0.6	-0.1	0.2	-0.1	0.3	..	0.2
September	0.3	0.3	0.3	0.3	..	0.1	..	0.2	..	0.1
October	0.3	0.2	0.3	0.4	-0.1	0.3	..	0.2	..	0.1
November	0.3	0.2	0.2	0.4	..	0.9	0.1	0.2	..	0.1
December	0.2	..	0.2	..	-0.1	0.6	..	0.2	..	0.1
1992 —										
January	0.2	0.1	0.2	0.3	..	0.8	0.1	0.2	-0.1	0.1
February	0.2	0.1	0.2	-0.2	..	0.6	0.1	0.2	-0.1	0.1
March	0.1	0.1	0.1	-1.1	..	..	..	0.1	-0.1	..
April	0.1	0.1	0.1	-0.3	0.2	-0.3	0.1	0.1	-0.1	..
May	0.2	0.1	0.1	0.4	-0.2	1.1	..	0.1	-0.2	..
June	0.1	..	0.1	0.4	..	0.1	..	0.1	-0.1	..
July	0.1	0.1	0.1	-0.1	-0.3	..	-0.2	0.1	-0.1	..
August	..	..	..	0.3	..	0.1	..	..	-0.2	..
September	0.1	0.1	0.1	0.1	-0.4	0.2	-0.3	..	-0.3	-0.1
October	..	0.2	0.1	0.4	-0.3	-0.3	-0.3	..	-0.3	-0.1
November	0.1	..	0.1	-0.2	-0.2	-0.6	-0.3	..	-0.4	-0.1
December	..	..	..	0.1	-0.3	-0.3	-0.3	..	-0.3	-0.1
1993 —										
January	..	..	..	0.4	..	..	..	..	-0.3	-0.1
February	..	-0.2	..	0.3	-0.4	0.4	-0.3	-0.1	-0.3	-0.2
March	..	0.1	..	1.0	-0.4	-0.2	-0.4	..	-0.4	-0.2
April	..	..	..	0.3	-0.6	0.2	-0.5	..	-0.4	-0.2
May	..	..	..	0.2	-0.6	-0.8	-0.6	-0.1	-0.3	-0.1
June	..	-0.1	..	-0.4	-0.4	-0.5	-0.4	..	-0.3	-0.1
July	..	-0.3	..	-1.8	-0.5	-0.2	-0.4	-0.1	-0.2	-0.1
August	0.1	-0.3	..	-0.7	-0.4	0.5	-0.3	..	-0.3	-0.1
September	0.1	-0.1	0.1	-0.5	-0.4	0.1	-0.3	..	-0.3	-0.1
October	0.1	-0.1	..	-1.5	-0.5	-0.3	-0.5	..	-0.2	-0.1
November	0.1	-0.2	0.1	..	-0.7	0.1	-0.6	..	-0.2	-0.1
December	0.2	-0.2	0.1	-0.7	-0.9	..	-0.8	..	-0.3	-0.1
1994 —										
January	0.1	0.1	0.1	-0.2	-0.8	1.0	-0.5	0.1	-0.3	-0.1





TABLE 3. LABOUR FORCE STATUS OF CIVILIAN POPULATION AGED 15 AND OVER  
DIFFERENCE ('000), 1991 CENSUS-BASED MINUS 1986 CENSUS-BASED DATA  
VICTORIA

Month	Employed		Unemployed				Labour force	Not in labour force	Civilian population aged 15 and over	Unemployment rate —percentage points	Participation rate	
	Full-time workers	Part-time workers	Total	Looking for full-time work		Total						
				Aged 15-19 looking for first job	Looking for part-time work							
—'000—												
1989 —												
January	0.3	1.4	1.6	..	..	-0.2	-0.2	1.4	1.0	2.4	..	..
February	-0.4	1.0	0.6	0.1	-0.1	0.1	..	0.6	1.0	1.6	..	..
March	-0.3	0.9	0.6	..	..	0.1	0.1	0.7	0.1	0.9	..	..
April	-0.3	0.9	0.7	0.1	-0.1	..	..	0.6	-0.3	0.4	..	..
May	-0.6	0.5	-0.1	0.1	-0.1	..	-0.1	-0.2	0.1	-0.1	..	..
June	-0.9	0.5	-0.4	0.1	-0.3	-0.1	-0.3	-0.8	0.1	-0.6	..	..
July	-1.4	0.6	-0.7	0.1	..	..	..	-0.7	0.2	-0.5	..	..
August	-1.3	0.6	-0.7	0.2	..	0.2	0.2	-0.5	0.1	-0.4	..	..
September	-1.2	0.5	-0.6	..	-0.2	0.1	-0.1	-0.8	0.4	-0.3	..	..
October	-0.7	0.6	-0.1	0.2	0.1	..	0.1	..	0.9	0.9	..	..
November	-0.3	1.0	0.8	..	-0.1	-0.1	-0.2	0.6	1.5	2.1	..	..
December	0.6	1.3	1.9	..	0.1	0.1	0.2	2.1	1.3	3.3	..	..
1990 —												
January	1.0	1.1	2.1	0.1	0.1	..	..	2.2	1.5	3.7	..	..
February	0.5	1.1	1.6	..	0.1	0.2	0.3	1.9	2.1	4.0	..	..
March	0.9	1.9	2.8	..	..	0.2	0.2	3.0	1.4	4.4	..	..
April	..	2.0	2.0	0.1	0.2	..	0.2	2.2	1.7	3.8	..	..
May	-0.1	1.6	1.6	..	..	0.1	..	1.6	1.7	3.3	..	..
June	-0.1	1.4	1.3	-0.1	-0.2	-0.1	-0.3	0.9	1.8	2.8	..	..
July	-1.6	0.9	-0.7	..	-0.1	0.2	0.1	-0.6	1.6	1.0	..	..
August	-2.6	0.8	-1.8	0.1	-0.2	-0.2	-0.4	-2.2	1.6	-0.6	..	..
September	-3.8	0.6	-3.2	0.3	-0.3	-0.1	-0.5	-3.7	1.3	-2.3	..	-0.1
October	-4.6	0.9	-3.7	..	-0.9	..	-0.9	-4.6	1.4	-3.2	..	-0.1
November	-4.5	..	-4.5	0.1	-0.5	-0.2	-0.8	-5.3	1.2	-4.0	..	-0.1
December	-5.2	0.4	-4.9	0.1	-0.7	-0.1	-0.7	-5.6	0.7	-4.9	..	-0.1
1991 —												
January	-5.6	0.4	-5.1	0.2	-1.0	0.2	-0.8	-6.0	0.1	-5.8	..	-0.1
February	-6.4	0.3	-6.0	0.1	-0.8	-0.1	-0.9	-6.9	0.2	-6.8	..	-0.1
March	-6.5	0.5	-6.0	..	-1.5	0.1	-1.4	-7.4	-0.3	-7.7	..	-0.1
April	-7.0	0.5	-6.4	0.1	-1.3	..	-1.3	-7.8	-0.5	-8.3	..	-0.1
May	-6.7	-0.3	-6.9	0.1	-1.8	-0.1	-1.9	-8.8	..	-8.9	..	-0.1
June	-7.3	-0.1	-7.4	0.1	-1.7	-0.1	-1.8	-9.2	-0.3	-9.5	..	-0.1
July	-7.7	-0.2	-7.9	..	-1.7	-0.1	-1.8	-9.7	-0.1	-9.8	..	-0.1
August	-8.3	0.2	-8.1	0.1	-1.8	..	-1.8	-9.8	-0.7	-10.5	..	-0.1
September	-9.1	-0.4	-9.4	0.1	-1.5	0.2	-1.3	-10.7	-0.5	-11.3	..	-0.1
October	-9.5	-0.2	-9.7	..	-1.7	-0.2	-1.9	-11.6	-0.5	-12.0	..	-0.1
November	-8.9	-1.1	-10.1	0.1	-1.9	0.1	-1.7	-11.8	-1.0	-12.8	..	-0.1
December	-9.8	-0.6	-10.4	0.3	-1.5	-0.2	-1.7	-12.1	-1.5	-13.6	..	-0.1
1992 —												
January	-10.3	..	-10.3	0.6	-0.9	..	-0.9	-11.1	-3.1	-14.2	..	-0.1
February	-10.9	-1.0	-11.9	0.4	-0.9	0.1	-0.8	-12.7	-2.2	-14.9	..	-0.1
March	-11.9	-0.4	-12.3	0.2	-1.1	0.3	-0.8	-13.1	-2.5	-15.6	..	-0.1
April	-11.3	-0.7	-12.0	0.1	-1.5	0.3	-1.1	-13.1	-3.2	-16.4	..	-0.1
May	-12.3	-0.7	-13.0	0.1	-1.7	0.1	-1.6	-14.6	-2.5	-17.1	..	-0.1
June	-13.1	-1.3	-14.4	0.2	-1.5	-0.1	-1.6	-16.0	-1.9	-17.9	..	-0.1
July	-12.9	-2.2	-15.1	0.1	-1.7	0.2	-1.4	-16.6	-3.0	-19.5	..	-0.1
August	-13.8	-2.3	-16.1	0.1	-1.6	-0.1	-1.7	-17.8	-3.4	-21.1	..	-0.1
September	-14.4	-2.5	-17.0	..	-1.7	-0.1	-1.7	-18.7	-4.1	-22.8	..	-0.1
October	-13.4	-2.4	-15.8	0.1	-2.5	..	-2.5	-18.3	-4.9	-23.3	..	-0.1
November	-14.0	-1.9	-15.9	0.1	-2.6	-0.2	-2.8	-18.8	-5.0	-23.8	..	-0.1
December	-15.3	-2.0	-17.4	0.2	-1.9	-0.2	-2.1	-19.5	-4.8	-24.3	..	-0.1
1993 —												
January	-15.0	-2.0	-17.0	0.3	-2.2	..	-2.2	-19.3	-6.1	-25.4	..	-0.1
February	-16.1	-2.5	-18.6	0.2	-2.2	-0.5	-2.7	-21.3	-5.2	-26.5	..	-0.1
March	-17.1	-2.5	-19.6	0.1	-2.9	-0.3	-3.3	-22.9	-4.8	-27.6	..	-0.1
April	-16.6	-2.5	-19.1	0.1	-2.4	-0.2	-2.6	-21.7	-5.9	-27.6	..	-0.1
May	-15.7	-3.2	-18.8	..	-2.8	-0.3	-3.1	-21.9	-5.6	-27.5	..	-0.1
June	-15.8	-3.1	-18.9	-0.1	-2.4	-0.2	-2.6	-21.5	-6.0	-27.5	..	-0.1
July	-15.2	-3.1	-18.3	-0.1	-2.7	-0.4	-3.1	-21.4	-6.2	-27.5	..	-0.1
August	-14.7	-3.7	-18.4	0.1	-2.5	-0.4	-2.9	-21.3	-6.3	-27.6	..	-0.1
September	-15.6	-4.1	-19.6	0.1	-2.5	..	-2.5	-22.1	-5.5	-27.6	..	-0.1
October	-15.2	-3.2	-18.4	0.1	-3.1	..	-3.1	-21.5	-6.7	-28.2	..	-0.1
November	-16.5	-3.2	-19.7	0.3	-2.3	-0.1	-2.4	-22.1	-6.7	-28.8	..	-0.1
December	-16.9	-3.1	-20.0	0.5	-2.3	-0.3	-2.6	-22.6	-6.7	-29.3	..	-0.1
1994 —												
January	-17.1	-3.6	-20.7	0.3	-2.1	..	-2.1	-22.8	-6.4	-29.2	..	-0.1

TABLE 4. LABOUR FORCE STATUS OF CIVILIAN POPULATION AGED 15 AND OVER  
DIFFERENCE (Per cent), 1991 CENSUS-BASED MINUS 1986 CENSUS-BASED DATA  
VICTORIA

Month	Employed			Unemployed				Labour force	Not in labour force	Civilian population aged 15 and over
	Full-time workers	Part-time workers	Total	Looking for full-time work		Looking for part-time work	Total			
				Aged 15-19 looking for first job	Total					
1989 —										
January	..	0.4	0.1	0.1	..	-0.6	-0.1	0.1	0.1	0.1
February	..	0.3	..	0.8	-0.1	0.2	..	..	0.1	..
March	..	0.2	..	0.4	..	0.2	0.1	..	..	..
April	..	0.2	..	0.6	-0.1	0.1	..	..	..	..
May	..	0.1	..	1.9	-0.2	0.1	-0.1	..	..	..
June	-0.1	0.1	..	1.4	-0.4	-0.3	-0.3	..	..	..
July	-0.1	0.1	..	0.9	..	0.2	..	..	..	..
August	-0.1	0.1	..	2.0	..	0.6	0.2	..	..	..
September	-0.1	0.1	..	0.4	-0.3	0.3	-0.1	..	..	..
October	..	0.1	..	2.7	0.2	-0.2	0.1	..	0.1	..
November	..	0.3	..	0.4	-0.1	-0.3	-0.2	..	0.1	0.1
December	..	0.3	0.1	-0.1	0.1	0.5	0.2	0.1	0.1	0.1
1990 —										
January	0.1	0.3	0.1	1.0	0.1	-0.2	..	0.1	0.1	0.1
February	..	0.3	0.1	0.4	0.1	0.6	0.2	0.1	0.2	0.1
March	..	0.4	0.1	0.1	..	0.7	0.2	0.1	0.1	0.1
April	..	0.4	0.1	1.1	0.2	0.1	0.2	0.1	0.1	0.1
May	..	0.4	0.1	0.1	..	0.3	..	0.1	0.1	0.1
June	..	0.3	0.1	-1.8	-0.2	-0.5	-0.3	..	0.1	0.1
July	-0.1	0.2	..	-0.7	-0.1	0.8	0.1	..	0.1	..
August	-0.2	0.2	-0.1	1.3	-0.2	-0.6	-0.3	-0.1	0.1	..
September	-0.2	0.1	-0.1	2.7	-0.3	-0.4	-0.3	-0.2	0.1	-0.1
October	-0.3	0.2	-0.2	0.2	-0.7	..	-0.6	-0.2	0.1	-0.1
November	-0.3	..	-0.2	1.1	-0.4	-0.7	-0.4	-0.2	0.1	-0.1
December	-0.3	0.1	-0.2	0.6	-0.5	-0.2	-0.4	-0.3	0.1	-0.1
1991 —										
January	-0.3	0.1	-0.3	1.3	-0.6	0.5	-0.4	-0.3	..	-0.2
February	-0.4	0.1	-0.3	0.6	-0.5	-0.2	-0.4	-0.3	..	-0.2
March	-0.4	0.1	-0.3	..	-0.9	0.2	-0.6	-0.3	..	-0.2
April	-0.5	0.1	-0.3	0.8	-0.7	-0.1	-0.6	-0.3	..	-0.2
May	-0.4	-0.1	-0.3	0.6	-1.0	-0.4	-0.9	-0.4	..	-0.3
June	-0.5	..	-0.4	0.8	-0.9	-0.4	-0.9	-0.4	..	-0.3
July	-0.5	..	-0.4	-0.2	-0.9	-0.4	-0.9	-0.4	..	-0.3
August	-0.5	..	-0.4	1.3	-1.0	0.2	-0.8	-0.4	..	-0.3
September	-0.6	-0.1	-0.5	1.0	-0.8	0.6	-0.5	-0.5	..	-0.3
October	-0.6	..	-0.5	..	-0.9	-0.7	-0.9	-0.5	..	-0.3
November	-0.6	-0.3	-0.5	0.5	-1.0	0.4	-0.8	-0.5	-0.1	-0.4
December	-0.6	-0.1	-0.5	1.6	-0.7	-0.4	-0.7	-0.5	-0.1	-0.4
1992 —										
January	-0.7	..	-0.5	2.4	-0.4	0.1	-0.3	-0.5	-0.2	-0.4
February	-0.7	-0.2	-0.6	1.6	-0.4	0.3	-0.3	-0.6	-0.2	-0.4
March	-0.8	-0.1	-0.6	1.1	-0.5	0.6	-0.3	-0.6	-0.2	-0.4
April	-0.8	-0.1	-0.6	0.6	-0.7	0.9	-0.4	-0.6	-0.3	-0.5
May	-0.8	-0.2	-0.7	0.3	-0.8	0.3	-0.6	-0.7	-0.2	-0.5
June	-0.9	-0.3	-0.7	0.8	-0.7	-0.3	-0.6	-0.7	-0.1	-0.5
July	-0.9	-0.5	-0.8	0.8	-0.8	0.6	-0.6	-0.8	-0.2	-0.6
August	-0.9	-0.5	-0.8	0.6	-0.8	-0.4	-0.7	-0.8	-0.3	-0.6
September	-1.0	-0.5	-0.9	0.1	-0.8	-0.2	-0.7	-0.8	-0.3	-0.6
October	-0.9	-0.5	-0.8	1.1	-1.3	-0.1	-1.0	-0.8	-0.4	-0.7
November	-0.9	-0.4	-0.8	0.4	-1.2	-0.6	-1.1	-0.8	-0.4	-0.7
December	-1.0	-0.4	-0.9	0.9	-0.9	-0.5	-0.8	-0.9	-0.4	-0.7
1993 —										
January	-1.0	-0.5	-0.9	1.2	-0.9	-0.1	-0.8	-0.9	-0.5	-0.7
February	-1.1	-0.6	-1.0	0.8	-0.9	-1.0	-0.9	-1.0	-0.4	-0.8
March	-1.1	-0.5	-1.0	0.6	-1.3	-0.7	-1.2	-1.0	-0.4	-0.8
April	-1.1	-0.6	-1.0	0.6	-1.1	-0.5	-1.0	-1.0	-0.4	-0.8
May	-1.1	-0.7	-1.0	-0.1	-1.2	-0.7	-1.1	-1.0	-0.4	-0.8
June	-1.1	-0.7	-1.0	-0.4	-1.1	-0.6	-1.0	-1.0	-0.4	-0.8
July	-1.0	-0.7	-0.9	-0.4	-1.2	-1.2	-1.2	-1.0	-0.5	-0.8
August	-1.0	-0.8	-0.9	0.8	-1.1	-1.0	-1.1	-1.0	-0.5	-0.8
September	-1.0	-0.9	-1.0	0.7	-1.1	..	-0.9	-1.0	-0.4	-0.8
October	-1.0	-0.7	-0.9	0.5	-1.4	..	-1.2	-1.0	-0.5	-0.8
November	-1.1	-0.7	-1.0	1.6	-1.1	-0.2	-0.9	-1.0	-0.5	-0.8
December	-1.1	-0.7	-1.0	2.1	-1.0	-0.7	-1.0	-1.0	-0.5	-0.8
1994 —										
January	-1.1	-0.8	-1.1	1.4	-0.9	..	-0.8	-1.0	-0.5	-0.8







TABLE 3. LABOUR FORCE STATUS OF CIVILIAN POPULATION AGED 15 AND OVER  
DIFFERENCE ('000), 1991 CENSUS-BASED MINUS 1986 CENSUS-BASED DATA  
QUEENSLAND

Month	Employed		Unemployed					Labour force	Not in labour force	Civilian population aged 15 and over	Unemployment rate —percentage points—	Participation rate
	Full-time workers	Part-time workers	Total	Looking for full-time work		Looking for part-time work —'000—	Total					
				Aged 15-19 looking for first job	Total							
1989 —												
January	-2.5	-0.1	-2.6	-0.1	-0.4	-0.1	-0.5	-3.1	-2.9	-5.9	..	..
February	-2.0	0.1	-1.8	..	-0.4	..	-0.4	-2.3	-3.2	-5.5	..	0.1
March	-1.6	0.4	-1.2	-0.1	-0.3	-0.2	-0.5	-1.7	-3.4	-5.0	..	0.1
April	-2.0	0.5	-1.5	..	-0.3	-0.2	-0.5	-2.0	-3.9	-5.9	..	0.1
May	-2.4	..	-2.5	..	-0.2	-0.3	-0.5	-2.9	-3.9	-6.8	..	0.1
June	-2.6	0.1	-2.5	..	-0.4	-0.1	-0.4	-3.0	-4.7	-7.7	..	0.1
July	-3.2	0.2	-3.0	-0.1	-0.4	-0.2	-0.6	-3.6	-5.2	-8.8	..	0.1
August	-3.5	-0.1	-3.6	-0.1	-0.5	-0.3	-0.8	-4.4	-5.5	-9.9	..	0.1
September	-4.0	-0.3	-4.4	-0.1	-0.4	-0.2	-0.5	-4.9	-6.0	-11.0	..	0.1
October	-4.7	-0.6	-5.3	..	-0.2	-0.1	-0.4	-5.6	-6.3	-12.0	..	0.1
November	-4.9	-0.8	-5.7	..	-0.4	-0.3	-0.7	-6.4	-6.7	-13.0	..	0.1
December	-5.8	-0.7	-6.5	-0.1	-0.5	-0.3	-0.8	-7.3	-6.8	-14.1	..	0.1
1990 —												
January	-5.6	-0.9	-6.5	..	-0.6	-0.1	-0.7	-7.2	-7.2	-14.4	..	0.1
February	-6.0	-0.5	-6.5	-0.1	-0.6	-0.3	-0.9	-7.4	-7.3	-14.7	..	0.1
March	-5.9	-0.1	-6.0	-0.1	-0.9	-0.4	-1.3	-7.3	-7.8	-15.1	..	0.1
April	-6.7	-0.2	-6.9	-0.1	-1.0	-0.3	-1.3	-8.2	-7.8	-16.0	..	0.1
May	-7.2	-0.3	-7.5	-0.1	-1.0	-0.3	-1.3	-8.9	-7.9	-16.8	..	0.1
June	-7.6	-0.8	-8.3	-0.2	-1.2	-0.2	-1.4	-9.7	-7.9	-17.7	..	0.1
July	-7.3	-0.4	-7.7	-0.1	-1.2	-0.3	-1.5	-9.2	-8.7	-17.9	..	0.1
August	-6.8	-0.6	-7.4	-0.1	-1.3	-0.3	-1.6	-8.9	-9.3	-18.2	-0.1	0.1
September	-6.4	-0.9	-7.3	..	-1.0	..	-1.1	-8.3	-10.1	-18.5	..	0.2
October	-6.4	-0.6	-7.0	..	-1.1	-0.1	-1.3	-8.3	-9.4	-17.8	..	0.1
November	-6.3	-0.5	-6.8	..	-1.0	-0.2	-1.2	-8.0	-9.0	-17.0	..	0.1
December	-6.1	-0.5	-6.6	-0.1	-1.1	-0.3	-1.5	-8.0	-8.2	-16.3	..	0.1
1991 —												
January	-6.3	-0.8	-7.1	-0.2	-1.3	-0.2	-1.5	-8.6	-8.6	-17.3	..	0.1
February	-6.8	-0.9	-7.7	-0.2	-1.5	-0.1	-1.6	-9.3	-9.0	-18.3	..	0.1
March	-7.3	-0.9	-8.2	-0.1	-1.5	-0.2	-1.7	-9.9	-9.4	-19.3	..	0.1
April	-7.5	-0.8	-8.3	-0.2	-1.6	-0.4	-2.0	-10.3	-9.2	-19.5	-0.1	0.1
May	-7.9	-0.7	-8.6	-0.2	-1.7	-0.1	-1.8	-10.4	-9.3	-19.6	..	0.1
June	-8.1	-1.0	-9.1	-0.1	-1.5	-0.1	-1.6	-10.8	-9.1	-19.8	..	0.1
July	-8.2	-0.9	-9.1	-0.1	-1.3	-0.2	-1.6	-10.7	-9.3	-20.0	..	0.1
August	-7.9	-0.6	-8.5	-0.2	-1.8	-0.2	-2.0	-10.5	-9.1	-19.6	-0.1	0.1
September	-8.2	-0.8	-8.9	-0.2	-1.5	-0.3	-1.8	-10.7	-8.5	-19.2	..	0.1
October	-7.4	-0.9	-8.3	-0.1	-1.1	-0.1	-1.3	-9.6	-8.5	-18.1	..	0.1
November	-6.7	-0.9	-7.6	-0.1	-1.2	-0.1	-1.3	-8.8	-8.2	-17.0	..	0.1
December	-6.6	-0.8	-7.4	-0.3	-1.5	-0.1	-1.6	-9.0	-7.0	-16.0	..	0.1
1992 —												
January	-6.0	-0.6	-6.6	-0.2	-2.0	..	-2.0	-8.7	-7.8	-16.4	-0.1	0.1
February	-7.0	-0.9	-8.0	-0.2	-1.5	-0.1	-1.6	-9.5	-7.4	-16.9	..	0.1
March	-7.3	-1.0	-8.3	-0.1	-1.6	0.1	-1.5	-9.8	-7.6	-17.4	..	0.1
April	-7.6	-0.8	-8.4	-0.1	-1.6	0.1	-1.6	-9.9	-7.8	-17.7	..	0.1
May	-7.7	-1.0	-8.7	-0.1	-1.5	0.1	-1.3	-10.0	-8.0	-18.0	..	0.1
June	-7.8	-1.2	-9.1	-0.1	-1.5	..	-1.6	-10.6	-7.7	-18.3	..	..
July	-7.5	-1.1	-8.5	..	-1.7	-0.1	-1.9	-10.4	-7.8	-18.2	..	..
August	-7.5	-1.1	-8.6	..	-1.5	-0.1	-1.5	-10.1	-8.0	-18.1	..	..
September	-7.5	-0.5	-8.0	..	-1.7	..	-1.7	-9.7	-8.3	-18.0	..	0.1
October	-7.0	-0.8	-7.7	0.1	-1.3	0.1	-1.3	-9.0	-8.1	-17.1	..	0.1
November	-5.9	-0.7	-6.6	-0.1	-1.6	..	-1.5	-8.1	-8.1	-16.3	..	0.1
December	-5.8	-0.8	-6.6	..	-1.1	-0.1	-1.2	-7.8	-7.7	-15.4	..	0.1
1993 —												
January	-5.6	-0.8	-6.4	..	-1.2	..	-1.1	-7.6	-7.7	-15.3	..	0.1
February	-5.7	-0.8	-6.5	0.1	-1.2	..	-1.2	-7.8	-7.3	-15.0	..	0.1
March	-5.8	-0.2	-6.1	..	-1.4	0.1	-1.3	-7.4	-7.4	-14.8	..	0.1
April	-5.7	-0.4	-6.1	..	-1.4	0.2	-1.2	-7.3	-7.7	-15.0	..	0.1
May	-5.8	-0.4	-6.2	0.1	-1.0	-0.1	-1.1	-7.3	-8.0	-15.3	..	0.1
June	-6.1	-0.4	-6.6	0.2	-1.1	..	-1.1	-7.7	-7.9	-15.5	..	0.1
July	-6.2	-0.1	-6.4	0.1	-0.9	-0.1	-1.0	-7.4	-8.3	-15.7	..	0.1
August	-6.3	-0.5	-6.8	0.1	-0.9	-0.1	-0.9	-7.7	-8.0	-15.8	..	0.1
September	-6.3	-0.3	-6.6	0.2	-1.0	..	-1.0	-7.5	-8.4	-15.9	..	0.1
October	-6.5	-0.1	-6.6	..	-0.8	..	-0.8	-7.4	-8.7	-16.1	..	0.1
November	-6.9	-0.1	-7.0	0.1	-0.8	..	-0.7	-7.7	-8.6	-16.3	..	0.1
December	-7.3	-0.3	-7.6	0.3	-0.4	-0.1	-0.6	-8.1	-8.4	-16.5	..	0.1
1994 —												
January	-6.6	-0.5	-7.1	0.2	-0.6	0.1	-0.5	-7.6	-8.4	-16.0	..	0.1

TABLE 4. LABOUR FORCE STATUS OF CIVILIAN POPULATION AGED 15 AND OVER  
DIFFERENCE (Per cent), 1991 CENSUS-BASED MINUS 1986 CENSUS-BASED DATA  
QUEENSLAND

Month	Employed		Unemployed				Labour force	Not in labour force	Civilian population aged 15 and over	
	Full-time workers	Part-time workers	Total	Looking for full-time work		Looking for part-time work				
				Aged 15-19 looking for first job	Total					
1989 —										
January	-0.3	..	-0.2	-0.6	-0.5	-0.4	-0.5	-0.2	-0.4	-0.3
February	-0.2	..	-0.1	-0.5	-0.4	-0.2	-0.4	-0.2	-0.4	-0.3
March	-0.2	0.1	-0.1	-1.3	-0.4	-0.7	-0.5	-0.1	-0.4	-0.2
April	-0.2	0.2	-0.1	-0.3	-0.4	-0.8	-0.5	-0.1	-0.5	-0.3
May	-0.2	..	-0.2	-0.3	-0.3	-1.2	-0.5	-0.2	-0.5	-0.3
June	-0.3	..	-0.2	-1.4	-0.5	-0.5	-0.5	-0.2	-0.6	-0.3
July	-0.3	0.1	-0.2	-2.9	-0.5	-1.4	-0.7	-0.3	-0.6	-0.4
August	-0.3	..	-0.3	-2.2	-0.7	-1.5	-0.9	-0.3	-0.7	-0.4
September	-0.4	-0.1	-0.3	-1.4	-0.5	-0.8	-0.6	-0.3	-0.8	-0.5
October	-0.4	-0.2	-0.4	-0.3	-0.3	-0.6	-0.4	-0.4	-0.8	-0.5
November	-0.5	-0.3	-0.4	-0.5	-0.7	-1.3	-0.8	-0.4	-0.8	-0.6
December	-0.5	-0.3	-0.5	-1.0	-0.6	-1.4	-0.8	-0.5	-0.9	-0.6
1990 —										
January	-0.5	-0.3	-0.5	-0.4	-0.7	-0.3	-0.7	-0.5	-0.9	-0.6
February	-0.6	-0.2	-0.5	-1.9	-0.8	-0.8	-0.8	-0.5	-0.9	-0.7
March	-0.6	..	-0.4	-2.0	-1.1	-1.5	-1.2	-0.5	-1.0	-0.7
April	-0.6	..	-0.5	-2.3	-1.1	-1.5	-1.2	-0.6	-1.0	-0.7
May	-0.7	-0.1	-0.6	-2.2	-1.1	-1.4	-1.2	-0.6	-1.0	-0.8
June	-0.7	-0.3	-0.6	-3.0	-1.3	-0.8	-1.2	-0.7	-1.0	-0.8
July	-0.7	-0.1	-0.6	-2.3	-1.3	-1.5	-1.3	-0.6	-1.1	-0.8
August	-0.7	-0.2	-0.6	-2.3	-1.3	-1.3	-1.3	-0.6	-1.1	-0.8
September	-0.6	-0.3	-0.5	-0.8	-1.1	-0.1	-0.9	-0.6	-1.3	-0.8
October	-0.6	-0.2	-0.5	-0.1	-1.3	-0.6	-1.1	-0.6	-1.2	-0.8
November	-0.6	-0.2	-0.5	-0.5	-1.1	-0.8	-1.0	-0.5	-1.1	-0.8
December	-0.6	-0.2	-0.5	-1.1	-1.0	-1.4	-1.0	-0.5	-1.0	-0.7
1991 —										
January	-0.6	-0.3	-0.5	-1.3	-1.1	-1.0	-1.1	-0.6	-1.0	-0.8
February	-0.7	-0.3	-0.6	-1.7	-1.2	-0.4	-1.0	-0.6	-1.1	-0.8
March	-0.7	-0.3	-0.6	-1.6	-1.2	-0.7	-1.1	-0.7	-1.1	-0.8
April	-0.8	-0.3	-0.6	-2.2	-1.2	-1.2	-1.2	-0.7	-1.1	-0.8
May	-0.8	-0.2	-0.7	-1.9	-1.3	-0.3	-1.2	-0.7	-1.1	-0.9
June	-0.8	-0.3	-0.7	-1.6	-1.3	-0.7	-1.2	-0.7	-1.1	-0.9
July	-0.8	-0.3	-0.7	-1.8	-1.1	-1.0	-1.1	-0.7	-1.1	-0.9
August	-0.8	-0.2	-0.6	-2.5	-1.5	-0.9	-1.4	-0.7	-1.1	-0.8
September	-0.8	-0.3	-0.7	-2.8	-1.4	-1.0	-1.3	-0.7	-1.0	-0.8
October	-0.7	-0.3	-0.6	-1.7	-1.0	-0.6	-1.0	-0.7	-1.0	-0.8
November	-0.7	-0.3	-0.6	-1.5	-1.1	-0.4	-1.0	-0.6	-0.9	-0.7
December	-0.6	-0.3	-0.5	-1.5	-1.2	-0.3	-1.0	-0.6	-0.8	-0.7
1992 —										
January	-0.6	-0.2	-0.5	-1.4	-1.4	-0.2	-1.3	-0.6	-0.9	-0.7
February	-0.7	-0.3	-0.6	-1.3	-1.1	-0.3	-0.9	-0.6	-0.9	-0.7
March	-0.7	-0.3	-0.6	-1.2	-1.2	0.3	-0.9	-0.7	-0.9	-0.8
April	-0.8	-0.2	-0.6	-1.4	-1.3	0.2	-1.0	-0.7	-0.9	-0.8
May	-0.8	-0.3	-0.6	-1.3	-1.1	0.5	-0.9	-0.7	-0.9	-0.8
June	-0.8	-0.4	-0.7	-1.4	-1.1	-0.2	-1.0	-0.7	-0.9	-0.8
July	-0.7	-0.3	-0.6	-0.4	-1.3	-0.6	-1.2	-0.7	-0.9	-0.8
August	-0.7	-0.3	-0.6	0.2	-1.2	-0.3	-1.1	-0.7	-0.9	-0.8
September	-0.7	-0.1	-0.6	0.2	-1.4	..	-1.1	-0.6	-1.0	-0.8
October	-0.7	-0.2	-0.6	1.3	-1.2	0.2	-0.9	-0.6	-0.9	-0.7
November	-0.6	-0.2	-0.5	-0.7	-1.2	..	-1.0	-0.5	-0.9	-0.7
December	-0.5	-0.3	-0.5	0.3	-0.8	-0.3	-0.7	-0.5	-0.9	-0.6
1993 —										
January	-0.5	-0.3	-0.5	0.3	-0.8	0.1	-0.6	-0.5	-0.9	-0.6
February	-0.5	-0.3	-0.5	0.6	-0.8	..	-0.7	-0.5	-0.8	-0.6
March	-0.5	-0.1	-0.4	-0.1	-1.0	0.4	-0.8	-0.5	-0.9	-0.6
April	-0.5	-0.1	-0.4	0.4	-1.0	0.8	-0.8	-0.5	-0.9	-0.6
May	-0.6	-0.1	-0.5	0.6	-0.7	-0.4	-0.7	-0.5	-0.9	-0.6
June	-0.6	-0.1	-0.5	2.0	-0.8	-0.1	-0.7	-0.5	-0.9	-0.6
July	-0.6	..	-0.5	2.0	-0.7	-0.4	-0.7	-0.5	-0.9	-0.6
August	-0.6	-0.2	-0.5	0.9	-0.6	-0.3	-0.6	-0.5	-0.9	-0.6
September	-0.6	-0.1	-0.5	2.2	-0.8	0.2	-0.6	-0.5	-0.9	-0.6
October	-0.6	..	-0.5	0.2	-0.7	..	-0.6	-0.5	-1.0	-0.7
November	-0.6	..	-0.5	1.2	-0.6	0.2	-0.5	-0.5	-1.0	-0.7
December	-0.7	-0.1	-0.5	1.5	-0.3	-0.5	-0.4	-0.5	-1.0	-0.7
1994 —										
January	-0.6	-0.2	-0.5	1.5	-0.4	0.3	-0.3	-0.5	-0.9	-0.6



TABLE 2. LABOUR FORCE STATUS OF CIVILIAN POPULATION AGED 15 AND OVER  
ESTIMATES BASED ON 1991 CENSUS BENCHMARKS  
SOUTH AUSTRALIA

Month	Employed		Unemployed				Labour force	Not in labour force	Civilian population aged 15 and over	Unemp- loyment rate —per cent—	Partic- ipation rate	
	Full-time workers	Part-time workers	Looking for full-time work		Total	Looking for part- time work —'000—						
			Aged 15-19 looking for first job	Total								
1989 —												
January	486.8	141.4	628.1	7.1	49.6	11.1	60.7	688.9	425.1	1,113.9	8.8	61.8
February	491.8	147.9	639.7	6.3	48.7	10.9	59.7	699.3	415.6	1,115.0	8.5	62.7
March	494.9	155.9	650.8	3.2	40.8	9.2	50.0	700.8	415.2	1,116.0	7.1	62.8
April	496.7	152.0	648.8	3.2	40.1	10.3	50.4	699.1	417.8	1,117.0	7.2	62.6
May	493.8	150.4	644.3	4.4	45.4	9.0	54.4	698.7	419.3	1,117.9	7.8	62.5
June	490.7	152.8	643.5	4.2	40.8	8.0	48.8	692.3	426.6	1,118.9	7.0	61.9
July	502.4	140.2	642.6	4.0	41.9	9.4	51.3	693.9	426.0	1,120.0	7.4	62.0
August	496.3	154.3	650.6	4.0	38.7	7.2	45.9	696.5	424.5	1,121.0	6.6	62.1
September	499.2	157.7	657.0	4.0	37.2	8.8	46.0	703.0	419.1	1,122.1	6.5	62.7
October	497.7	149.3	647.0	3.8	37.7	10.1	47.8	694.8	428.5	1,123.3	6.9	61.9
November	500.4	150.4	650.8	4.2	40.3	8.3	48.6	699.5	425.0	1,124.4	7.0	62.2
December	502.9	150.8	653.7	4.2	39.1	9.1	48.2	702.0	423.6	1,125.6	6.9	62.4
1990 —												
January	501.2	144.9	646.1	4.2	42.0	10.3	52.3	698.4	428.1	1,126.5	7.5	62.0
February	502.0	149.0	651.0	4.3	47.7	10.3	58.1	709.1	418.4	1,127.5	8.2	62.9
March	503.0	154.5	657.5	3.4	40.2	8.5	48.7	706.1	422.4	1,128.5	6.9	62.6
April	503.2	154.1	657.3	3.4	37.7	9.3	47.0	704.3	425.2	1,129.5	6.7	62.4
May	502.4	156.1	658.5	4.3	41.3	9.9	51.2	709.7	420.8	1,130.5	7.2	62.8
June	503.7	154.4	658.2	4.6	39.6	8.5	48.1	706.3	425.2	1,131.5	6.8	62.4
July	501.9	154.0	656.0	3.4	41.7	7.8	49.5	705.5	426.9	1,132.4	7.0	62.3
August	492.2	159.5	651.7	3.8	46.9	10.5	57.4	709.1	424.3	1,133.4	8.1	62.6
September	492.5	160.0	652.5	3.4	49.2	10.9	60.1	712.6	421.8	1,134.4	8.4	62.8
October	500.5	157.0	657.6	3.4	47.7	9.8	57.5	715.1	420.4	1,135.5	8.0	63.0
November	498.5	155.6	654.1	3.7	49.4	7.4	56.8	710.9	425.7	1,136.6	8.0	62.5
December	508.4	158.6	667.0	5.4	51.2	10.5	61.7	728.7	409.0	1,137.7	8.5	64.0
1991 —												
January	495.7	149.9	645.6	6.8	59.9	12.5	72.5	718.1	420.6	1,138.7	10.1	63.1
February	497.1	156.9	654.0	4.6	59.1	11.6	70.7	724.7	415.0	1,139.7	9.8	63.6
March	495.2	159.4	654.5	4.5	54.8	12.6	67.4	721.9	418.8	1,140.7	9.3	63.3
April	484.1	168.9	652.9	4.6	56.9	13.9	70.8	723.8	417.9	1,141.6	9.8	63.4
May	479.1	169.8	648.9	4.0	58.1	9.8	67.9	716.8	425.8	1,142.6	9.5	62.7
June	478.6	168.1	646.7	3.1	54.4	10.3	64.6	711.3	432.3	1,143.6	9.1	62.2
July	470.4	153.7	624.1	4.3	61.1	9.6	70.7	694.8	449.8	1,144.6	10.2	60.7
August	472.8	153.7	626.5	4.3	60.5	11.5	72.0	698.5	447.0	1,145.5	10.3	61.0
September	476.6	155.4	631.9	3.7	63.1	12.7	75.8	707.7	438.6	1,146.4	10.7	61.7
October	473.2	155.9	629.1	3.5	62.7	10.2	72.9	702.0	445.3	1,147.3	10.4	61.2
November	470.4	159.7	630.1	4.0	62.6	9.7	72.4	702.4	445.9	1,148.3	10.3	61.2
December	473.8	161.5	635.3	6.6	68.7	13.0	81.8	717.1	432.2	1,149.3	11.4	62.4
1992 —												
January	472.3	151.8	624.0	7.1	73.2	11.0	84.2	708.2	441.8	1,150.0	11.9	61.6
February	469.7	156.0	625.7	8.4	75.5	13.8	89.4	715.1	435.7	1,150.8	12.5	62.1
March	469.1	164.5	633.6	6.3	66.7	13.4	80.2	713.7	437.8	1,151.5	11.2	62.0
April	466.7	161.4	628.1	5.2	70.4	12.5	82.9	711.0	441.1	1,152.1	11.7	61.7
May	457.7	166.6	624.3	5.3	75.6	10.4	86.0	710.3	442.3	1,152.6	12.1	61.6
June	456.5	168.9	625.4	5.8	73.1	10.1	83.2	708.6	444.5	1,153.2	11.7	61.5
July	460.2	165.9	626.1	5.4	71.0	9.1	80.1	706.2	447.5	1,153.7	11.3	61.2
August	456.6	165.9	622.5	6.3	71.2	11.3	82.4	704.9	449.2	1,154.1	11.7	61.1
September	465.5	166.3	631.8	7.3	70.3	12.6	82.9	714.6	440.0	1,154.6	11.6	61.9
October	467.1	167.3	634.3	5.9	68.0	11.6	79.6	714.0	441.2	1,155.1	11.2	61.8
November	465.5	166.5	632.0	8.1	71.3	10.2	81.5	713.4	442.2	1,155.6	11.4	61.7
December	471.9	161.8	633.7	8.5	74.6	12.6	87.2	720.9	435.1	1,156.1	12.1	62.4
1993 —												
January	466.8	157.3	624.1	8.0	76.3	14.5	90.8	714.9	441.7	1,156.6	12.7	61.8
February	467.6	166.9	634.5	7.6	72.3	15.2	87.6	722.1	435.0	1,157.0	12.1	62.4
March	463.0	171.3	634.3	5.7	69.7	12.0	81.8	716.1	441.4	1,157.5	11.4	61.9
April	458.2	172.8	631.0	5.3	67.0	12.8	79.9	710.9	447.1	1,158.0	11.2	61.4
May	470.6	167.4	638.0	5.8	62.3	12.3	74.6	712.6	445.9	1,158.5	10.5	61.5
June	473.1	162.9	636.0	5.2	64.1	9.8	73.9	709.9	449.1	1,159.0	10.4	61.2
July	471.6	164.2	635.8	6.2	63.0	9.7	72.7	708.5	451.0	1,159.5	10.3	61.1
August	462.5	167.9	630.3	5.1	59.6	10.5	70.0	700.3	459.7	1,160.0	10.0	60.4
September	466.3	169.4	635.8	5.4	63.1	11.7	74.8	710.5	450.0	1,160.5	10.5	61.2
October	465.9	164.9	630.9	5.9	65.2	13.3	78.6	709.4	451.7	1,161.2	11.1	61.1
November	466.2	170.2	636.4	5.8	63.3	13.1	76.4	712.8	448.9	1,161.8	10.7	61.4
December	479.2	167.7	646.9	8.9	66.8	13.3	80.1	727.0	435.4	1,162.4	11.0	62.5
1994 —												
January	466.3	163.3	629.6	9.2	74.5	13.2	87.8	717.4	445.6	1,163.0	12.2	61.7

TABLE 3. LABOUR FORCE STATUS OF CIVILIAN POPULATION AGED 15 AND OVER  
DIFFERENCE ('000), 1991 CENSUS-BASED MINUS 1986 CENSUS-BASED DATA  
SOUTH AUSTRALIA

Month	Employed			Unemployed			Labour force	Not in labour force	Civilian population aged 15 and over	Unemployment rate —percentage points—	Participation rate	
	Full-time workers	Part-time workers	Total	Looking for full-time work		Total						
				Aged 15-19 looking for first job	Looking for part-time work —'000—							
1989 —												
January	-3.2	..	-3.2	..	-0.5	-0.1	-0.6	-3.8	0.2	-3.6	..	-0.1
February	-3.4	-0.1	-3.5	..	-0.5	..	-0.6	-4.1	0.1	-4.1	..	-0.1
March	-3.8	-0.2	-4.0	..	-0.4	-0.1	-0.5	-4.4	..	-4.5	..	-0.1
April	-3.9	-0.3	-4.2	..	-0.5	..	-0.5	-4.7	-0.3	-5.0	..	-0.1
May	-4.4	-0.2	-4.6	..	-0.5	-0.1	-0.6	-5.2	-0.3	-5.5	..	-0.2
June	-4.7	-0.3	-5.0	..	-0.4	-0.1	-0.5	-5.5	-0.5	-6.0	..	-0.2
July	-4.6	-0.3	-4.9	..	-0.5	..	-0.5	-5.4	-0.3	-5.7	..	-0.2
August	-4.8	..	-4.8	..	-0.4	..	-0.3	-5.2	-0.2	-5.4	..	-0.2
September	-4.7	-0.1	-4.8	..	-0.3	..	-0.4	-5.1	..	-5.1	..	-0.2
October	-4.6	..	-4.6	-0.1	-0.6	..	-0.6	-5.3	-0.1	-5.3	..	-0.2
November	-4.7	-0.1	-4.8	-0.1	-0.6	..	-0.6	-5.4	-0.2	-5.6	..	-0.2
December	-4.8	-0.1	-4.9	..	-0.6	..	-0.6	-5.5	-0.3	-5.8	..	-0.2
1990 —												
January	-4.8	-0.3	-5.0	..	-0.5	-0.1	-0.6	-5.6	-0.2	-5.9	..	-0.2
February	-5.2	-0.1	-5.3	..	-0.5	-0.1	-0.5	-5.8	-0.1	-5.9	..	-0.2
March	-5.3	-0.3	-5.6	..	-0.5	..	-0.5	-6.1	0.2	-6.0	..	-0.2
April	-5.8	-0.1	-5.9	..	-0.3	..	-0.4	-6.3	0.2	-6.1	..	-0.2
May	-5.8	-0.2	-6.0	..	-0.6	..	-0.6	-6.6	0.3	-6.4	..	-0.2
June	-6.0	..	-6.0	..	-0.6	-0.1	-0.6	-6.6	..	-6.6	..	-0.2
July	-6.0	-0.1	-6.2	..	-0.5	..	-0.4	-6.6	-0.1	-6.7	..	-0.2
August	-6.0	-0.1	-6.2	0.1	-0.6	..	-0.6	-6.8	..	-6.8	..	-0.2
September	-5.9	-0.2	-6.1	..	-0.6	-0.1	-0.7	-6.7	-0.3	-7.0	..	-0.2
October	-6.3	-0.3	-6.7	..	-0.8	..	-0.8	-7.5	0.3	-7.3	..	-0.3
November	-6.4	-0.3	-6.8	..	-0.8	..	-0.8	-7.6	0.1	-7.5	..	-0.3
December	-6.7	-0.6	-7.3	..	-0.9	..	-0.9	-8.2	0.4	-7.8	..	-0.3
1991 —												
January	-6.9	-0.5	-7.4	..	-1.2	0.1	-1.0	-8.5	0.3	-8.2	..	-0.3
February	-7.4	-0.5	-7.9	..	-1.1	..	-1.1	-9.0	0.5	-8.5	..	-0.3
March	-7.9	-0.1	-8.0	..	-1.2	..	-1.2	-9.2	0.4	-8.8	..	-0.3
April	-7.8	-0.4	-8.2	..	-1.1	-0.1	-1.2	-9.4	0.2	-9.2	..	-0.3
May	-8.3	-0.5	-8.7	..	-1.1	-0.1	-1.2	-9.9	0.4	-9.5	..	-0.3
June	-8.6	-0.5	-9.1	..	-1.0	..	-1.1	-10.2	0.3	-9.9	..	-0.3
July	-8.5	-0.6	-9.1	-0.1	-1.3	-0.1	-1.3	-10.4	0.3	-10.1	..	-0.4
August	-8.5	-0.7	-9.3	..	-1.2	..	-1.2	-10.5	..	-10.5	..	-0.3
September	-8.6	-0.7	-9.4	..	-1.4	-0.1	-1.5	-10.8	..	-10.8	..	-0.4
October	-8.8	-0.8	-9.6	..	-1.4	-0.1	-1.5	-11.1	-0.1	-11.2	..	-0.4
November	-9.1	-0.9	-10.1	..	-1.3	..	-1.4	-11.5	-0.1	-11.6	..	-0.4
December	-9.2	-1.0	-10.2	0.1	-1.6	..	-1.6	-11.8	-0.2	-12.0	..	-0.4
1992 —												
January	-9.4	-0.9	-10.3	..	-1.6	..	-1.6	-11.9	-0.4	-12.3	..	-0.4
February	-9.7	-1.0	-10.7	..	-1.8	-0.1	-1.9	-12.5	..	-12.6	..	-0.4
March	-10.0	-1.0	-11.0	..	-1.5	-0.2	-1.7	-12.7	-0.2	-12.9	..	-0.4
April	-10.3	-1.2	-11.5	..	-1.8	-0.1	-1.9	-13.4	..	-13.4	..	-0.4
May	-10.3	-1.3	-11.6	..	-2.0	..	-2.0	-13.7	-0.2	-13.8	..	-0.4
June	-10.5	-1.7	-12.2	..	-1.8	-0.1	-1.8	-14.0	-0.3	-14.3	..	-0.4
July	-10.5	-1.6	-12.2	..	-1.7	-0.1	-1.7	-13.9	-0.6	-14.5	..	-0.4
August	-10.7	-1.5	-12.2	..	-1.8	-0.1	-1.9	-14.2	-0.6	-14.7	..	-0.4
September	-11.0	-1.6	-12.5	..	-1.5	-0.2	-1.8	-14.3	-0.6	-14.9	..	-0.4
October	-11.0	-1.7	-12.8	..	-1.3	-0.2	-1.5	-14.3	-0.7	-15.0	..	-0.4
November	-10.9	-1.4	-12.3	..	-1.5	-0.1	-1.6	-14.0	-1.1	-15.0	..	-0.4
December	-10.9	-1.5	-12.4	..	-1.6	-0.1	-1.7	-14.1	-1.0	-15.1	..	-0.4
1993 —												
January	-10.6	-1.7	-12.3	0.1	-1.5	-0.2	-1.7	-14.0	-1.1	-15.1	..	-0.4
February	-11.0	-2.0	-13.0	..	-1.2	..	-1.2	-14.2	-0.9	-15.1	0.1	-0.4
March	-10.9	-1.7	-12.6	..	-1.3	-0.1	-1.3	-13.9	-1.3	-15.2	..	-0.4
April	-10.5	-1.7	-12.1	..	-1.2	-0.3	-1.4	-13.6	-1.2	-14.8	..	-0.4
May	-10.6	-1.6	-12.3	..	-0.9	-0.1	-1.1	-13.3	-1.1	-14.4	..	-0.4
June	-10.5	-1.4	-12.0	0.1	-0.9	-0.2	-1.1	-13.0	-0.9	-14.0	..	-0.4
July	-10.1	-1.4	-11.4	..	-1.1	-0.1	-1.2	-12.6	-1.2	-13.8	..	-0.4
August	-9.8	-1.5	-11.4	..	-1.2	-0.1	-1.3	-12.7	-0.9	-13.6	..	-0.4
September	-10.1	-1.2	-11.3	0.1	-1.1	-0.2	-1.3	-12.5	-0.9	-13.4	..	-0.4
October	-9.8	-1.5	-11.3	..	-1.2	-0.1	-1.3	-12.6	-0.7	-13.4	..	-0.4
November	-9.8	-1.4	-11.2	..	-1.4	-0.2	-1.6	-12.8	-0.5	-13.3	..	-0.4
December	-10.0	-1.5	-11.4	0.1	-1.3	-0.1	-1.4	-12.8	-0.4	-13.2	..	-0.4
1994 —												
January	-9.6	-1.5	-11.1	0.1	-1.1	-0.1	-1.3	-12.4	-0.7	-13.1	..	-0.4

TABLE 4. LABOUR FORCE STATUS OF CIVILIAN POPULATION AGED 15 AND OVER  
DIFFERENCE (Per cent), 1991 CENSUS-BASED MINUS 1986 CENSUS-BASED DATA  
SOUTH AUSTRALIA

Month	Employed			Unemployed				Labour force	Not in labour force	Civilian population aged 15 and over
	Full-time workers	Part-time workers	Total	Looking for full-time work		Looking for part-time work	Total			
				Aged 15-19 looking for first job	Total					
1989 —										
January	-0.6	..	-0.5	-0.2	-1.1	-0.6	-1.0	-0.5	..	-0.3
February	-0.7	-0.1	-0.5	-0.8	-1.1	-0.3	-1.0	-0.6	..	-0.4
March	-0.8	-0.1	-0.6	-1.5	-0.9	-0.9	-0.9	-0.6	..	-0.4
April	-0.8	-0.2	-0.6	-1.6	-1.2	-0.2	-1.0	-0.7	-0.1	-0.4
May	-0.9	-0.2	-0.7	-0.6	-1.0	-0.9	-1.0	-0.7	-0.1	-0.5
June	-0.9	-0.2	-0.8	-0.2	-1.1	-1.0	-1.0	-0.8	-0.1	-0.5
July	-0.9	-0.2	-0.8	-0.2	-1.1	-0.3	-0.9	-0.8	-0.1	-0.5
August	-0.9	..	-0.7	0.9	-1.0	0.5	-0.8	-0.7	-0.1	-0.5
September	-0.9	..	-0.7	0.7	-0.9	-0.5	-0.8	-0.7	..	-0.4
October	-0.9	..	-0.7	-1.8	-1.7	..	-1.3	-0.8	..	-0.5
November	-0.9	-0.1	-0.7	-1.4	-1.4	-0.4	-1.3	-0.8	..	-0.5
December	-0.9	-0.1	-0.8	-0.8	-1.5	-0.4	-1.3	-0.8	-0.1	-0.5
1990 —										
January	-0.9	-0.2	-0.8	-0.6	-1.3	-0.6	-1.1	-0.8	-0.1	-0.5
February	-1.0	-0.1	-0.8	-0.3	-1.0	-0.7	-0.9	-0.8	..	-0.5
March	-1.0	-0.2	-0.8	-0.5	-1.2	-0.3	-1.0	-0.9	..	-0.5
April	-1.1	-0.1	-0.9	0.3	-0.9	-0.3	-0.8	-0.9	..	-0.5
May	-1.1	-0.1	-0.9	-0.8	-1.4	-0.4	-1.2	-0.9	0.1	-0.6
June	-1.2	..	-0.9	-0.7	-1.4	-0.9	-1.3	-0.9	..	-0.6
July	-1.2	-0.1	-0.9	-0.6	-1.1	0.4	-0.9	-0.9	..	-0.6
August	-1.2	-0.1	-0.9	1.6	-1.3	-0.2	-1.1	-0.9	..	-0.6
September	-1.2	-0.1	-0.9	1.3	-1.2	-0.8	-1.1	-0.9	-0.1	-0.6
October	-1.3	-0.2	-1.0	1.0	-1.6	-0.4	-1.4	-1.0	0.1	-0.6
November	-1.3	-0.2	-1.0	0.8	-1.7	0.1	-1.5	-1.1	..	-0.7
December	-1.3	-0.4	-1.1	0.8	-1.8	..	-1.5	-1.1	0.1	-0.7
1991 —										
January	-1.4	-0.4	-1.1	-0.7	-1.9	1.1	-1.4	-1.2	0.1	-0.7
February	-1.5	-0.3	-1.2	0.4	-1.8	-0.2	-1.6	-1.2	0.1	-0.7
March	-1.6	..	-1.2	-0.4	-2.1	-0.3	-1.8	-1.3	0.1	-0.8
April	-1.6	-0.2	-1.2	-1.2	-1.9	-0.7	-1.7	-1.3	0.1	-0.8
May	-1.7	-0.3	-1.3	-0.1	-1.8	-1.0	-1.7	-1.4	0.1	-0.8
June	-1.8	-0.3	-1.4	0.1	-1.9	-0.3	-1.6	-1.4	0.1	-0.9
July	-1.8	-0.4	-1.4	-1.9	-2.0	-0.6	-1.8	-1.5	0.1	-0.9
August	-1.8	-0.5	-1.5	-1.1	-2.0	0.2	-1.6	-1.5	..	-0.9
September	-1.8	-0.5	-1.5	0.2	-2.1	-0.6	-1.9	-1.5	..	-0.9
October	-1.8	-0.5	-1.5	0.3	-2.2	-0.8	-2.0	-1.6	..	-1.0
November	-1.9	-0.6	-1.6	-0.5	-2.1	-0.1	-1.8	-1.6	..	-1.0
December	-1.9	-0.6	-1.6	0.9	-2.3	-0.1	-1.9	-1.6	..	-1.0
1992 —										
January	-1.9	-0.6	-1.6	0.3	-2.1	-0.1	-1.9	-1.6	-0.1	-1.1
February	-2.0	-0.6	-1.7	0.5	-2.3	-0.7	-2.0	-1.7	..	-1.1
March	-2.1	-0.6	-1.7	..	-2.3	-1.2	-2.1	-1.8	..	-1.1
April	-2.1	-0.7	-1.8	-0.2	-2.5	-0.7	-2.2	-1.8	..	-1.1
May	-2.2	-0.8	-1.8	-0.8	-2.6	-0.1	-2.3	-1.9	..	-1.2
June	-2.3	-1.0	-1.9	0.1	-2.3	-0.8	-2.2	-1.9	-0.1	-1.2
July	-2.2	-1.0	-1.9	-0.3	-2.3	-0.9	-2.1	-1.9	-0.1	-1.2
August	-2.3	-0.9	-1.9	-0.8	-2.4	-1.3	-2.3	-2.0	-0.1	-1.3
September	-2.3	-0.9	-1.9	0.5	-2.1	-1.7	-2.1	-2.0	-0.1	-1.3
October	-2.3	-1.0	-2.0	0.4	-1.9	-1.4	-1.8	-2.0	-0.2	-1.3
November	-2.3	-0.8	-1.9	-0.4	-2.1	-1.1	-2.0	-1.9	-0.2	-1.3
December	-2.3	-0.9	-1.9	..	-2.0	-1.2	-1.9	-1.9	-0.2	-1.3
1993 —										
January	-2.2	-1.1	-1.9	0.7	-2.0	-1.4	-1.9	-1.9	-0.2	-1.3
February	-2.3	-1.2	-2.0	0.4	-1.6	-0.2	-1.4	-1.9	-0.2	-1.3
March	-2.3	-1.0	-1.9	0.8	-1.8	-0.7	-1.6	-1.9	-0.3	-1.3
April	-2.2	-1.0	-1.9	0.9	-1.7	-2.0	-1.8	-1.9	-0.3	-1.3
May	-2.2	-0.9	-1.9	0.9	-1.5	-0.9	-1.4	-1.8	-0.2	-1.2
June	-2.2	-0.9	-1.8	1.8	-1.4	-1.9	-1.4	-1.8	-0.2	-1.2
July	-2.1	-0.8	-1.8	-0.1	-1.7	-1.0	-1.6	-1.8	-0.3	-1.2
August	-2.1	-0.9	-1.8	-0.2	-2.0	-1.0	-1.8	-1.8	-0.2	-1.2
September	-2.1	-0.7	-1.7	1.1	-1.7	-1.4	-1.7	-1.7	-0.2	-1.1
October	-2.1	-0.9	-1.8	..	-1.8	-0.9	-1.6	-1.8	-0.2	-1.1
November	-2.1	-0.8	-1.7	0.4	-2.1	-1.4	-2.0	-1.8	-0.1	-1.1
December	-2.0	-0.9	-1.7	1.1	-1.9	-1.0	-1.7	-1.7	-0.1	-1.1
1994 —										
January	-2.0	-0.9	-1.7	1.4	-1.5	-1.0	-1.4	-1.7	-0.2	-1.1





TABLE 2. LABOUR FORCE STATUS OF CIVILIAN POPULATION AGED 15 AND OVER  
ESTIMATES BASED ON 1991 CENSUS BENCHMARKS  
WESTERN AUSTRALIA

Month	Employed		Unemployed				Labour force	Not in labour force	Civilian population aged 15 and over	Unemployment rate — per cent —	Participation rate	
	Full-time workers	Part-time workers	Total	Looking for full-time work		Looking for part-time work —'000—						
				Aged 15-19 looking for first job	Total							
1989 —												
January	571.7	156.7	728.4	4.5	42.4	8.8	51.2	779.6	413.5	1,193.0	6.6	65.3
February	576.8	157.7	734.5	4.4	39.9	10.6	50.5	785.0	410.7	1,195.7	6.4	65.7
March	576.2	158.1	734.3	1.7	35.1	13.9	49.0	783.3	415.0	1,198.3	6.3	65.4
April	571.9	167.6	739.5	2.0	32.9	11.3	44.2	783.7	417.2	1,200.8	5.6	65.3
May	568.3	167.4	735.7	2.0	33.0	10.0	43.1	778.8	424.6	1,203.4	5.5	64.7
June	561.6	170.9	732.6	1.7	33.9	10.6	44.5	777.0	428.9	1,205.9	5.7	64.4
July	574.9	162.7	737.6	1.7	32.9	9.1	42.0	779.6	428.7	1,208.3	5.4	64.5
August	570.2	169.3	739.5	2.1	34.0	10.0	43.9	783.4	427.3	1,210.7	5.6	64.7
September	574.3	173.5	747.8	2.5	37.7	12.3	49.9	797.7	415.4	1,213.2	6.3	65.8
October	573.5	174.4	748.0	2.5	32.9	9.8	42.7	790.7	425.0	1,215.7	5.4	65.0
November	578.3	167.1	745.4	1.5	32.3	7.6	40.0	785.3	432.9	1,218.2	5.1	64.5
December	583.8	172.7	756.6	4.3	41.9	12.6	54.5	811.0	409.7	1,220.7	6.7	66.4
1990 —												
January	579.6	152.7	732.3	5.4	50.2	11.4	61.6	793.9	429.1	1,222.9	7.8	64.9
February	584.5	161.8	746.3	5.2	48.3	13.9	62.2	808.5	416.7	1,225.2	7.7	66.0
March	577.4	173.9	751.3	3.6	44.4	16.3	60.7	812.0	415.4	1,227.4	7.5	66.2
April	581.1	167.6	748.7	3.1	45.5	15.3	60.8	809.6	419.9	1,229.4	7.5	65.8
May	571.0	174.1	745.0	2.0	48.8	12.4	61.2	806.2	425.2	1,231.5	7.6	65.5
June	571.1	176.0	747.1	2.7	48.8	12.5	61.3	808.3	425.1	1,233.5	7.6	65.5
July	582.6	170.5	753.1	2.7	48.0	11.5	59.5	812.6	422.6	1,235.1	7.3	65.8
August	570.5	173.1	743.6	2.6	52.0	9.6	61.6	805.2	431.7	1,236.8	7.6	65.1
September	585.0	169.2	754.2	2.9	54.1	14.2	68.3	822.5	416.0	1,238.5	8.3	66.4
October	575.4	172.9	748.3	2.1	54.3	10.0	64.3	812.6	427.7	1,240.3	7.9	65.5
November	563.2	174.8	738.0	1.5	53.2	11.5	64.7	802.7	439.4	1,242.1	8.1	64.6
December	576.7	175.0	751.8	4.9	59.7	11.8	71.5	823.2	420.7	1,243.9	8.7	66.2
1991 —												
January	566.7	164.7	731.4	7.0	66.6	14.1	80.7	812.1	433.4	1,245.5	9.9	65.2
February	559.9	171.9	731.8	4.1	71.6	16.1	87.7	819.5	427.5	1,247.0	10.7	65.7
March	548.4	182.9	731.3	3.9	70.2	18.8	89.0	820.3	428.2	1,248.5	10.8	65.7
April	543.4	188.3	731.8	4.6	74.6	18.9	93.6	825.4	424.7	1,250.1	11.3	66.0
May	548.0	187.9	735.8	3.1	71.5	11.8	83.3	819.1	432.5	1,251.7	10.2	65.4
June	548.0	182.6	730.6	4.1	73.2	12.0	85.2	815.8	437.4	1,253.2	10.4	65.1
July	543.9	178.0	721.9	3.3	75.8	11.1	87.0	808.9	445.9	1,254.8	10.8	64.5
August	546.5	186.4	732.9	3.9	73.3	12.3	85.6	818.5	437.9	1,256.4	10.5	65.1
September	549.9	188.4	738.3	4.8	75.6	12.8	88.4	826.6	431.5	1,258.1	10.7	65.7
October	548.7	180.6	729.4	3.3	72.8	11.5	84.3	813.7	446.3	1,259.9	10.4	64.6
November	551.3	181.7	733.0	4.4	71.2	12.2	83.4	816.3	445.4	1,261.7	10.2	64.7
December	561.9	180.7	742.5	7.2	74.6	13.5	88.1	830.6	432.9	1,263.5	10.6	65.7
1992 —												
January	551.6	166.6	718.2	7.7	85.4	15.6	101.0	819.2	445.8	1,265.0	12.3	64.8
February	546.6	180.2	726.9	7.6	85.1	14.7	99.9	826.7	439.8	1,266.5	12.1	65.3
March	544.0	184.7	728.7	5.4	82.4	16.9	99.4	828.1	439.9	1,267.9	12.0	65.3
April	547.0	187.1	734.1	5.8	75.0	14.4	89.3	823.5	446.1	1,269.5	10.8	64.9
May	556.9	181.3	738.2	6.7	75.5	13.3	88.8	827.0	444.1	1,271.1	10.7	65.1
June	552.0	189.4	741.4	7.1	72.3	12.2	84.6	826.0	446.7	1,272.6	10.2	64.9
July	556.5	181.2	737.7	6.4	72.4	13.1	85.5	823.2	450.9	1,274.1	10.4	64.6
August	547.3	185.7	733.0	6.7	74.7	15.4	90.1	823.0	452.6	1,275.6	10.9	64.5
September	553.0	188.7	741.8	6.4	75.6	15.6	91.2	833.0	444.2	1,277.1	10.9	65.2
October	559.6	177.6	737.1	6.7	71.8	15.0	86.7	823.9	454.8	1,278.7	10.5	64.4
November	560.3	176.1	736.5	4.4	65.5	12.1	77.6	814.1	466.2	1,280.3	9.5	63.6
December	562.9	182.4	745.3	7.4	74.2	17.1	91.3	836.7	445.3	1,281.9	10.9	65.3
1993 —												
January	562.0	179.1	741.1	7.7	77.1	13.7	90.8	831.9	451.7	1,283.6	10.9	64.8
February	556.3	179.1	735.4	5.4	70.9	17.5	88.4	823.8	461.5	1,285.3	10.7	64.1
March	571.8	193.3	765.1	4.6	63.5	17.9	81.5	846.6	440.3	1,286.9	9.6	65.8
April	562.6	190.0	752.5	3.1	70.2	14.5	84.6	837.2	451.4	1,288.6	10.1	65.0
May	570.7	188.8	759.5	4.8	65.3	14.8	80.2	839.6	450.6	1,290.3	9.5	65.1
June	574.5	195.2	769.7	3.2	58.6	14.5	73.0	842.8	449.2	1,291.9	8.7	65.2
July	572.6	193.6	766.1	2.3	59.6	13.3	72.8	839.0	454.6	1,293.6	8.7	64.9
August	568.3	193.5	761.8	4.2	63.7	11.6	75.3	837.0	458.1	1,295.2	9.0	64.6
September	578.1	200.9	779.0	3.6	61.2	14.5	75.8	854.8	442.0	1,296.8	8.9	65.9
October	579.9	192.7	772.6	4.4	60.8	11.8	72.6	845.2	453.3	1,298.5	8.6	65.1
November	577.0	196.7	773.7	5.8	59.2	12.7	71.9	845.6	454.6	1,300.2	8.5	65.0
December	593.8	189.5	783.2	7.2	65.3	13.7	79.0	862.3	439.6	1,301.9	9.2	66.2
1994 —												
January	585.1	191.5	776.6	8.0	68.7	13.6	82.3	858.9	444.9	1,303.8	9.6	65.9

TABLE 3. LABOUR FORCE STATUS OF CIVILIAN POPULATION AGED 15 AND OVER  
DIFFERENCE ('000), 1991 CENSUS-BASED MINUS 1986 CENSUS-BASED DATA  
WESTERN AUSTRALIA

Month	Employed			Unemployed			Labour force	Not in labour force	Civilian population aged 15 and over	Unemployment rate —percentage—	Participation rate —points—	
	Full-time workers	Part-time workers	Total	Looking for full-time work		Looking for part-time work						
				Aged 15-19 looking for first job	Total							
				—'000—								
1989 —												
January	-7.1	-1.0	-8.0	..	-0.4	..	-0.4	-8.4	-3.1	-11.5	..	-0.1
February	-7.8	-1.0	-8.8	..	-0.4	..	-0.5	-9.3	-3.1	-12.4	..	-0.1
March	-8.2	-1.2	-9.3	..	-0.5	-0.1	-0.6	-9.9	-3.3	-13.2	..	-0.1
April	-8.4	-1.2	-9.6	..	-0.6	-0.1	-0.6	-10.2	-3.5	-13.7	..	-0.1
May	-8.4	-1.3	-9.7	..	-0.6	-0.1	-0.7	-10.4	-3.8	-14.2	..	-0.1
June	-8.8	-1.4	-10.2	..	-0.5	..	-0.6	-10.8	-3.9	-14.7	..	-0.1
July	-9.6	-1.3	-11.0	-0.1	-0.7	-0.1	-0.8	-11.8	-3.9	-15.7	..	-0.1
August	-10.3	-1.6	-11.9	..	-0.6	-0.1	-0.7	-12.6	-4.0	-16.6	..	-0.1
September	-10.7	-1.6	-12.4	..	-0.8	-0.1	-1.0	-13.4	-4.2	-17.6	..	-0.1
October	-10.7	-1.8	-12.5	-0.1	-0.8	-0.1	-0.9	-13.4	-4.4	-17.8	..	-0.1
November	-11.1	-1.5	-12.6	..	-0.7	-0.1	-0.7	-13.4	-4.6	-18.0	..	-0.1
December	-11.4	-1.7	-13.0	0.1	-0.8	-0.1	-0.9	-13.9	-4.3	-18.2	..	-0.1
1990 —												
January	-11.4	-1.3	-12.7	..	-1.1	..	-1.1	-13.8	-4.6	-18.4	..	-0.1
February	-11.5	-1.6	-13.1	..	-1.1	-0.1	-1.2	-14.3	-4.3	-18.6	..	-0.2
March	-11.8	-1.8	-13.5	..	-0.9	-0.1	-1.0	-14.6	-4.3	-18.8	..	-0.2
April	-12.3	-1.9	-14.2	..	-0.9	-0.1	-1.0	-15.2	-4.4	-19.6	..	-0.2
May	-12.7	-2.0	-14.8	..	-1.1	..	-1.1	-15.9	-4.5	-20.4	..	-0.2
June	-13.3	-2.3	-15.6	..	-1.1	-0.2	-1.3	-16.9	-4.4	-21.3	..	-0.2
July	-13.8	-2.1	-16.0	..	-1.2	-0.1	-1.3	-17.3	-5.0	-22.3	..	-0.2
August	-14.2	-2.2	-16.4	..	-1.2	..	-1.3	-17.6	-5.7	-23.3	..	-0.2
September	-14.9	-2.3	-17.2	..	-1.2	-0.1	-1.4	-18.6	-5.8	-24.4	..	-0.2
October	-15.2	-2.6	-17.7	-0.1	-1.3	-0.1	-1.4	-19.1	-6.0	-25.1	..	-0.2
November	-15.2	-2.7	-17.9	..	-1.2	-0.2	-1.4	-19.3	-6.5	-25.8	..	-0.2
December	-16.1	-2.7	-18.7	..	-1.2	-0.1	-1.3	-20.0	-6.4	-26.5	..	-0.2
1991 —												
January	-16.4	-2.5	-18.9	..	-1.5	-0.1	-1.6	-20.5	-6.7	-27.2	..	-0.2
February	-16.6	-2.8	-19.3	..	-2.0	-0.2	-2.2	-21.5	-6.5	-28.0	..	-0.2
March	-16.5	-3.1	-19.6	..	-2.2	-0.3	-2.5	-22.2	-6.6	-28.7	..	-0.3
April	-16.8	-3.3	-20.2	..	-2.3	-0.3	-2.5	-22.7	-6.5	-29.2	..	-0.3
May	-17.3	-3.1	-20.5	-0.1	-2.3	-0.1	-2.5	-22.9	-6.8	-29.7	..	-0.3
June	-17.6	-3.3	-20.9	..	-2.3	-0.2	-2.5	-23.4	-6.8	-30.2	..	-0.3
July	-17.1	-3.6	-20.8	..	-2.6	-0.2	-2.8	-23.5	-7.3	-30.8	..	-0.3
August	-17.8	-3.7	-21.6	..	-2.2	-0.1	-2.4	-23.9	-7.4	-31.3	..	-0.3
September	-18.4	-3.6	-22.0	..	-2.5	-0.2	-2.7	-24.7	-7.0	-31.8	..	-0.3
October	-18.6	-3.5	-22.2	-0.1	-2.6	-0.1	-2.8	-25.0	-7.3	-32.3	..	-0.3
November	-18.9	-3.8	-22.6	..	-2.5	-0.2	-2.7	-25.3	-7.4	-32.8	..	-0.3
December	-19.2	-3.5	-22.6	..	-2.6	-0.2	-2.8	-25.4	-7.8	-33.3	..	-0.3
1992 —												
January	-19.2	-3.7	-22.9	..	-2.9	-0.2	-3.1	-26.0	-8.1	-34.0	..	-0.3
February	-19.9	-3.9	-23.8	..	-3.0	-0.2	-3.2	-27.0	-7.8	-34.8	..	-0.3
March	-20.3	-4.1	-24.5	..	-2.8	-0.3	-3.0	-27.5	-8.1	-35.6	..	-0.3
April	-20.5	-4.0	-24.6	..	-2.8	-0.2	-2.9	-27.5	-8.5	-36.1	..	-0.3
May	-21.2	-4.0	-25.2	..	-2.7	-0.3	-3.0	-28.2	-8.4	-36.6	..	-0.3
June	-21.3	-4.3	-25.7	..	-2.7	-0.3	-3.0	-28.6	-8.4	-37.0	..	-0.3
July	-21.2	-4.2	-25.4	..	-2.7	-0.3	-3.0	-28.5	-8.6	-37.1	..	-0.3
August	-21.0	-4.1	-25.1	..	-2.6	-0.3	-3.0	-28.1	-9.0	-37.1	..	-0.3
September	-21.1	-4.3	-25.4	-0.2	-2.8	-0.3	-3.1	-28.5	-8.7	-37.1	..	-0.3
October	-21.0	-4.4	-25.3	..	-2.5	-0.4	-2.8	-28.2	-9.3	-37.5	..	-0.3
November	-20.9	-4.0	-24.8	..	-2.3	-0.3	-2.6	-27.4	-10.3	-37.8	..	-0.3
December	-20.9	-4.1	-25.0	-0.1	-2.6	-0.3	-2.9	-28.0	-10.2	-38.1	..	-0.2
1993 —												
January	-21.0	-4.1	-25.1	..	-2.4	-0.3	-2.7	-27.8	-10.4	-38.3	..	-0.2
February	-20.8	-4.4	-25.1	..	-2.3	-0.4	-2.7	-27.9	-10.5	-38.4	..	-0.3
March	-21.7	-4.6	-26.3	..	-2.0	-0.4	-2.3	-28.7	-9.9	-38.5	..	-0.3
April	-21.0	-4.5	-25.5	..	-2.2	-0.3	-2.6	-28.0	-10.0	-38.1	..	-0.3
May	-21.1	-4.8	-25.8	..	-1.9	-0.3	-2.2	-28.0	-9.6	-37.6	0.1	-0.3
June	-20.5	-4.6	-25.2	..	-1.9	-0.3	-2.2	-27.4	-9.8	-37.1	..	-0.2
July	-20.1	-4.4	-24.5	1	-2.0	-0.3	-2.3	-26.8	-10.1	-36.9	..	-0.2
August	-20.4	-4.3	-24.7	..	-2.0	-0.2	-2.2	-26.9	-9.7	-36.6	..	-0.2
September	-20.5	-4.3	-24.9	..	-2.0	-0.3	-2.3	-27.2	-9.2	-36.4	..	-0.2
October	-20.5	-4.3	-24.8	-0.1	-1.8	-0.2	-2.1	-26.9	-9.4	-36.3	..	-0.3
November	-20.7	-4.0	-24.7	..	-1.8	-0.4	-2.2	-26.8	-9.3	-36.2	..	-0.3
December	-20.9	-3.9	-24.8	-0.1	-1.9	-0.2	-2.1	-26.9	-9.2	-36.1	..	-0.2
1994 —												
January	-20.5	-3.9	-24.4	-0.1	-1.9	-0.1	-2.0	-26.5	-9.4	-35.8	..	-0.2

1 Rounded to zero.

TABLE 4. LABOUR FORCE STATUS OF CIVILIAN POPULATION AGED 15 AND OVER  
DIFFERENCE (Per cent), 1991 CENSUS-BASED MINUS 1986 CENSUS-BASED DATA  
WESTERN AUSTRALIA

Month	Employed			Unemployed				Labour force	Not in labour force	Civilian population aged 15 and over
	Full-time workers	Part-time workers	Total	Looking for full-time work		Looking for part-time work	Total			
				Aged 15-19 looking for first job	Total					
1989 —										
January	-1.2	-0.6	-1.1	0.5	-0.8	-0.4	-0.8	-1.1	-0.7	-0.9
February	-1.3	-0.7	-1.2	0.5	-1.1	-0.4	-1.0	-1.2	-0.7	-1.0
March	-1.4	-0.7	-1.3	-1.3	-1.4	-0.5	-1.1	-1.3	-0.8	-1.1
April	-1.4	-0.7	-1.3	-2.4	-1.7	-0.5	-1.4	-1.3	-0.8	-1.1
May	-1.5	-0.8	-1.3	-1.6	-1.8	-0.9	-1.5	-1.3	-0.9	-1.2
June	-1.5	-0.8	-1.4	-1.4	-1.6	-0.5	-1.3	-1.4	-0.9	-1.2
July	-1.6	-0.8	-1.5	-3.3	-2.0	-1.0	-1.8	-1.5	-0.9	-1.3
August	-1.8	-0.9	-1.6	-1.6	-1.8	-0.8	-1.6	-1.6	-0.9	-1.3
September	-1.8	-0.9	-1.6	-1.8	-2.1	-1.2	-1.9	-1.6	-1.0	-1.4
October	-1.8	-1.0	-1.6	-3.0	-2.3	-1.0	-2.0	-1.7	-1.0	-1.4
November	-1.9	-0.9	-1.7	-0.7	-2.0	-1.0	-1.8	-1.7	-1.0	-1.4
December	-1.9	-1.0	-1.7	1.4	-1.8	-0.6	-1.6	-1.7	-1.0	-1.5
1990 —										
January	-1.9	-0.9	-1.7	-0.8	-2.1	..	-1.7	-1.7	-1.1	-1.5
February	-1.9	-1.0	-1.7	-0.5	-2.1	-0.9	-1.9	-1.7	-1.0	-1.5
March	-2.0	-1.0	-1.8	-0.5	-2.0	-0.6	-1.6	-1.8	-1.0	-1.5
April	-2.1	-1.1	-1.9	0.4	-2.0	-0.8	-1.7	-1.8	-1.0	-1.6
May	-2.2	-1.2	-1.9	-1.8	-2.2	-0.1	-1.8	-1.9	-1.0	-1.6
June	-2.3	-1.3	-2.0	-1.9	-2.3	-1.3	-2.1	-2.0	-1.0	-1.7
July	-2.3	-1.2	-2.1	-1.2	-2.4	-1.2	-2.1	-2.1	-1.2	-1.8
August	-2.4	-1.3	-2.2	0.4	-2.3	-0.5	-2.0	-2.1	-1.3	-1.8
September	-2.5	-1.3	-2.2	-0.1	-2.3	-1.0	-2.0	-2.2	-1.4	-1.9
October	-2.6	-1.5	-2.3	-3.1	-2.3	-1.1	-2.1	-2.3	-1.4	-2.0
November	-2.6	-1.5	-2.4	-2.1	-2.3	-1.6	-2.1	-2.3	-1.4	-2.0
December	-2.7	-1.5	-2.4	-1.1	-1.9	-1.2	-1.8	-2.4	-1.5	-2.1
1991 —										
January	-2.8	-1.5	-2.5	-0.6	-2.3	-0.6	-2.0	-2.5	-1.5	-2.1
February	-2.9	-1.6	-2.6	-1.3	-2.7	-1.1	-2.4	-2.6	-1.5	-2.2
March	-2.9	-1.7	-2.6	-1.4	-3.0	-1.7	-2.7	-2.6	-1.5	-2.3
April	-3.0	-1.7	-2.7	-0.7	-3.0	-1.3	-2.6	-2.7	-1.5	-2.3
May	-3.1	-1.6	-2.7	-2.0	-3.2	-1.0	-2.9	-2.7	-1.5	-2.3
June	-3.1	-1.8	-2.8	..	-3.1	-1.7	-2.9	-2.8	-1.5	-2.4
July	-3.0	-2.0	-2.8	-0.6	-3.3	-1.3	-3.1	-2.8	-1.6	-2.4
August	-3.2	-2.0	-2.9	-0.8	-3.0	-1.1	-2.7	-2.8	-1.6	-2.4
September	-3.2	-1.9	-2.9	-1.0	-3.2	-1.4	-3.0	-2.9	-1.6	-2.5
October	-3.3	-1.9	-2.9	-1.8	-3.5	-1.3	-3.2	-3.0	-1.6	-2.5
November	-3.3	-2.0	-3.0	-0.8	-3.4	-1.5	-3.1	-3.0	-1.6	-2.5
December	-3.3	-1.9	-3.0	-0.5	-3.3	-1.7	-3.1	-3.0	-1.8	-2.6
1992 —										
January	-3.4	-2.2	-3.1	..	-3.3	-1.4	-3.0	-3.1	-1.8	-2.6
February	-3.5	-2.1	-3.2	-0.2	-3.4	-1.2	-3.1	-3.2	-1.8	-2.7
March	-3.6	-2.2	-3.3	0.5	-3.3	-1.6	-3.0	-3.2	-1.8	-2.7
April	-3.6	-2.1	-3.2	-0.3	-3.5	-1.3	-3.2	-3.2	-1.9	-2.8
May	-3.7	-2.2	-3.3	-0.4	-3.5	-1.9	-3.2	-3.3	-1.8	-2.8
June	-3.7	-2.2	-3.3	-0.8	-3.6	-2.5	-3.4	-3.3	-1.8	-2.8
July	-3.7	-2.3	-3.3	-0.4	-3.6	-2.3	-3.4	-3.3	-1.9	-2.8
August	-3.7	-2.2	-3.3	-0.8	-3.4	-2.1	-3.2	-3.3	-2.0	-2.8
September	-3.7	-2.2	-3.3	-2.4	-3.5	-2.0	-3.3	-3.3	-1.9	-2.8
October	-3.6	-2.4	-3.3	-0.8	-3.3	-2.4	-3.2	-3.3	-2.0	-2.8
November	-3.6	-2.2	-3.3	0.9	-3.4	-2.4	-3.2	-3.3	-2.2	-2.9
December	-3.6	-2.2	-3.3	-0.9	-3.4	-1.7	-3.1	-3.2	-2.2	-2.9
1993 —										
January	-3.6	-2.3	-3.3	..	-3.1	-1.8	-2.9	-3.2	-2.3	-2.9
February	-3.6	-2.4	-3.3	-0.2	-3.2	-2.1	-3.0	-3.3	-2.2	-2.9
March	-3.6	-2.3	-3.3	-0.2	-3.0	-2.0	-2.8	-3.3	-2.2	-2.9
April	-3.6	-2.3	-3.3	-0.1	-3.1	-2.3	-2.9	-3.2	-2.2	-2.9
May	-3.6	-2.5	-3.3	1.1	-2.8	-1.6	-2.6	-3.2	-2.1	-2.8
June	-3.4	-2.3	-3.2	1.1	-3.1	-2.2	-2.9	-3.1	-2.1	-2.8
July	-3.4	-2.2	-3.1	0.2	-3.2	-2.3	-3.0	-3.1	-2.2	-2.8
August	-3.5	-2.2	-3.1	..	-3.1	-1.7	-2.9	-3.1	-2.1	-2.8
September	-3.4	-2.1	-3.1	-0.9	-3.1	-2.0	-2.9	-3.1	-2.0	-2.7
October	-3.4	-2.2	-3.1	-1.6	-2.9	-1.9	-2.8	-3.1	-2.0	-2.7
November	-3.5	-2.0	-3.1	-0.1	-2.9	-3.0	-2.9	-3.1	-2.0	-2.7
December	-3.4	-2.0	-3.1	-1.3	-2.8	-1.6	-2.6	-3.0	-2.0	-2.7
1994 —										
January	-3.4	-2.0	-3.0	-0.9	-2.7	-0.9	-2.4	-3.0	-2.1	-2.7

TABLE 1. LABOUR FORCE STATUS OF CIVILIAN POPULATION AGED 15 AND OVER  
ESTIMATES BASED ON 1986 CENSUS BENCHMARKS  
TASMANIA

Month	Employed		Unemployed					Labour force	Not in labour force	Civilian population aged 15 and over	Unemployment rate — per cent —	Participation rate
	Full-time workers	Part-time workers	Total	Looking for full-time work		Looking for part-time work	Total					
				Aged 15-19 looking for first job	Total							
					— '000 —							
1989 —												
January	144.2	37.6	181.8	4.2	20.8	3.1	23.9	205.7	139.0	344.7	11.6	59.7
February	143.5	39.7	183.2	3.7	20.9	2.9	23.8	207.0	137.9	344.9	11.5	60.0
March	141.7	42.8	184.5	2.3	17.8	3.4	21.2	205.7	139.4	345.1	10.3	59.6
April	144.4	44.2	188.7	1.8	15.7	3.1	18.8	207.4	137.9	345.3	9.1	60.1
May	145.8	45.9	191.7	2.0	15.6	1.8	17.4	209.1	136.4	345.6	8.3	60.5
June	146.3	43.3	189.6	2.0	16.5	2.7	19.2	208.8	137.1	345.8	9.2	60.4
July	145.8	46.1	191.9	1.6	15.6	2.5	18.0	209.9	136.2	346.1	8.6	60.6
August	147.2	45.8	193.0	1.7	15.4	1.9	17.2	210.3	136.2	346.5	8.2	60.7
September	148.4	47.3	195.6	2.3	15.9	3.2	19.1	214.7	132.1	346.8	8.9	61.9
October	149.9	47.8	197.7	1.9	13.8	3.0	16.8	214.5	132.8	347.3	7.8	61.8
November	149.9	47.8	197.7	2.4	15.1	3.0	18.2	215.9	131.8	347.7	8.4	62.1
December	155.0	47.4	202.5	3.5	17.3	3.6	20.9	223.3	124.8	348.2	9.3	64.1
1990 —												
January	151.9	43.9	195.7	3.8	18.1	3.4	21.5	217.2	131.3	348.5	9.9	62.3
February	153.5	42.3	195.9	2.1	15.2	3.8	19.0	214.9	134.0	348.9	8.8	61.6
March	153.0	45.6	198.6	2.4	14.5	3.6	18.1	216.8	132.5	349.3	8.4	62.1
April	153.6	47.4	201.0	2.1	15.0	2.9	17.9	218.8	130.8	349.6	8.2	62.6
May	157.3	43.9	201.3	1.8	14.2	3.6	17.8	219.0	130.9	349.9	8.1	62.6
June	155.9	41.1	197.0	1.7	15.6	4.3	19.9	216.9	133.3	350.3	9.2	61.9
July	154.3	43.7	198.1	1.7	16.2	2.6	18.9	216.9	133.9	350.8	8.7	61.8
August	151.6	43.6	195.2	2.0	17.1	2.6	19.7	214.9	136.4	351.3	9.2	61.2
September	152.0	47.0	199.1	1.8	17.4	3.0	20.4	219.5	132.3	351.8	9.3	62.4
October	150.2	47.9	198.1	1.8	16.4	3.7	20.1	218.2	134.0	352.2	9.2	61.9
November	151.2	49.0	200.3	1.4	15.9	2.4	18.4	218.6	133.9	352.6	8.4	62.0
December	152.5	48.7	201.3	2.8	18.2	3.7	21.9	223.1	129.8	353.0	9.8	63.2
1991 —												
January	148.6	44.8	193.4	2.6	18.8	3.6	22.4	215.8	137.5	353.3	10.4	61.1
February	149.9	45.5	195.5	2.4	18.9	3.8	22.7	218.2	135.4	353.6	10.4	61.7
March	148.5	49.5	198.0	2.0	17.8	4.5	22.3	220.3	133.6	353.9	10.1	62.3
April	147.3	49.7	197.0	1.8	18.4	4.7	23.0	220.1	134.1	354.1	10.5	62.1
May	146.6	46.9	193.5	1.4	19.4	2.4	21.8	215.4	138.9	354.3	10.1	60.8
June	142.7	48.9	191.6	1.9	20.3	4.1	24.4	216.0	138.5	354.5	11.3	60.9
July	144.4	48.2	192.5	1.2	19.8	2.9	22.8	215.3	139.5	354.8	10.6	60.7
August	142.9	48.7	191.6	1.9	21.3	2.7	23.9	215.5	139.6	355.1	11.1	60.7
September	146.1	49.2	195.3	1.9	21.4	3.5	24.9	220.2	135.1	355.4	11.3	62.0
October	145.0	49.1	194.2	2.3	19.8	2.9	22.6	216.8	138.8	355.6	10.4	61.0
November	140.6	50.5	191.1	2.2	20.6	3.8	24.5	215.5	140.3	355.9	11.3	60.6
December	145.8	48.8	194.6	3.9	21.8	3.6	25.4	220.0	136.1	356.1	11.5	61.8
1992 —												
January	144.1	43.5	187.6	3.3	22.1	3.5	25.6	213.2	143.1	356.4	12.0	59.8
February	145.6	44.6	190.2	3.0	20.8	3.9	24.7	215.0	141.7	356.6	11.5	60.3
March	142.5	47.9	190.4	2.4	20.5	3.9	24.4	214.8	142.0	356.9	11.4	60.2
April	140.1	50.4	190.5	1.6	19.7	3.0	22.7	213.1	143.9	357.0	10.6	59.7
May	138.6	48.6	187.2	2.4	19.2	3.6	22.8	210.1	147.1	357.2	10.9	58.8
June	136.8	50.6	187.3	2.7	22.0	3.6	25.6	213.0	144.4	357.4	12.0	59.6
July	141.5	48.7	190.2	2.6	20.9	4.2	25.1	215.3	142.6	357.9	11.6	60.1
August	139.6	51.6	191.2	2.5	20.9	3.9	24.8	216.0	142.4	358.4	11.5	60.3
September	139.6	50.2	189.8	2.1	21.3	4.1	25.3	215.1	143.9	359.0	11.8	59.9
October	141.1	51.3	192.3	2.1	21.9	3.6	25.4	217.8	141.6	359.4	11.7	60.6
November	138.0	52.7	190.7	1.8	21.2	3.0	24.2	214.9	144.9	359.8	11.3	59.7
December	140.1	51.3	191.4	3.0	24.1	4.9	28.9	220.3	139.9	360.2	13.1	61.2
1993 —												
January	140.1	47.9	188.0	2.8	26.4	3.9	30.4	218.4	142.2	360.5	13.9	60.6
February	141.2	46.6	187.8	3.5	24.1	3.4	27.5	215.2	145.7	360.9	12.8	59.6
March	140.1	50.0	190.2	2.4	21.2	4.2	25.4	215.6	145.7	361.3	11.8	59.7
April	139.4	48.9	188.2	2.6	21.8	4.1	25.9	214.1	147.4	361.5	12.1	59.2
May	141.8	49.8	191.6	2.3	21.6	3.3	25.0	216.6	145.1	361.7	11.5	59.9
June	141.4	49.6	191.1	1.7	24.6	3.9	28.5	219.6	142.3	361.9	13.0	60.7
July	141.1	49.4	190.6	2.2	23.9	3.1	27.0	217.6	144.5	362.1	12.4	60.1
August	138.8	48.7	187.5	2.5	24.8	3.8	28.6	216.1	146.2	362.3	13.2	59.6
September	141.4	49.2	190.6	1.8	24.5	3.3	27.8	218.4	144.2	362.6	12.7	60.2
October	139.0	50.6	189.6	2.3	23.8	4.0	27.8	217.3	145.4	362.8	12.8	59.9
November	137.5	52.7	190.2	2.0	23.9	3.1	27.0	217.2	145.8	363.0	12.4	59.8
December	146.8	52.0	198.8	3.9	24.4	3.0	27.4	226.2	137.1	363.3	12.1	62.3
1994 —												
January	141.3	50.2	191.5	4.3	25.1	2.9	28.1	219.6	143.9	363.4	12.8	60.4



TABLE 3. LABOUR FORCE STATUS OF CIVILIAN POPULATION AGED 15 AND OVER  
DIFFERENCE ('000), 1991 CENSUS-BASED MINUS 1986 CENSUS-BASED DATA  
TASMANIA

Month	Employed		Unemployed				Labour force	Not in labour force	Civilian population aged 15 and over	Unemployment rate —percentage points—	Participation rate	
	Full-time workers	Part-time workers	Total	Looking for full-time work		Total						
				Aged 15-19 looking for first job	Looking for part-time work —'000—							
1989 —												
January	1.2	0.3	1.5	..	0.1	..	0.2	1.7	0.9	2.6	..	..
February	1.3	0.3	1.7	..	0.1	..	0.2	1.8	1.0	2.8	..	..
March	1.4	0.4	1.8	..	0.1	..	0.2	2.0	1.0	3.0	..	0.1
April	1.5	0.4	1.9	..	0.1	..	0.2	2.1	1.0	3.1	..	0.1
May	1.6	0.5	2.1	..	0.1	..	0.1	2.3	1.1	3.3	..	0.1
June	1.8	0.4	2.2	..	0.2	..	0.2	2.4	1.1	3.5	..	0.1
July	1.7	0.5	2.3	..	0.2	..	0.2	2.5	1.1	3.6	..	0.1
August	1.8	0.6	2.4	..	0.2	..	0.2	2.6	1.1	3.7	..	0.1
September	1.9	0.6	2.4	..	0.2	..	0.2	2.6	1.1	3.8	..	0.1
October	1.9	0.6	2.5	..	0.1	..	0.2	2.7	1.1	3.8	..	0.1
November	1.9	0.7	2.5	..	0.1	..	0.1	2.7	1.1	3.8	..	0.1
December	1.9	0.6	2.6	..	0.2	..	0.2	2.8	1.0	3.8	..	0.1
1990 —												
January	1.9	0.6	2.5	..	0.2	..	0.2	2.8	1.2	3.9	..	0.1
February	2.0	0.6	2.6	..	0.1	0.1	0.2	2.8	1.3	4.0	..	0.1
March	2.0	0.7	2.7	..	0.1	0.1	0.2	2.8	1.3	4.2	..	0.1
April	2.0	0.6	2.6	..	0.2	0.1	0.2	2.9	1.4	4.3	..	..
May	2.1	0.6	2.8	..	0.1	..	0.2	3.0	1.4	4.4	..	0.1
June	2.1	0.6	2.7	..	0.2	0.1	0.3	3.0	1.5	4.5	..	0.1
July	2.0	0.6	2.6	..	0.2	..	0.2	2.8	1.5	4.3	..	..
August	1.8	0.6	2.4	..	0.2	0.1	0.3	2.7	1.5	4.1	..	..
September	1.7	0.6	2.3	..	0.2	..	0.2	2.5	1.4	4.0	..	..
October	1.7	0.6	2.3	..	0.1	0.1	0.2	2.5	1.4	3.9	..	..
November	1.7	0.7	2.4	..	0.1	..	0.1	2.5	1.3	3.9	..	..
December	1.8	0.6	2.4	..	0.1	..	0.1	2.5	1.3	3.8	-0.1	..
1991 —												
January	1.8	0.6	2.4	..	..	..	..	2.4	1.4	3.8	-0.1	..
February	1.7	0.6	2.3	..	0.1	..	0.1	2.4	1.4	3.8	-0.1	..
March	1.7	0.7	2.4	..	0.1	..	0.1	2.5	1.3	3.8	-0.1	..
April	1.7	0.7	2.4	..	0.1	..	0.1	2.6	1.3	3.9	..	..
May	1.7	0.6	2.3	..	0.2	..	0.2	2.5	1.5	4.0	..	..
June	1.6	0.7	2.4	..	0.1	0.1	0.2	2.5	1.5	4.0	..	..
July	1.6	0.7	2.3	..	0.1	..	0.1	2.5	1.6	4.0	-0.1	..
August	1.6	0.8	2.3	..	0.1	..	0.1	2.5	1.6	4.0	-0.1	..
September	1.6	0.7	2.3	..	0.2	..	0.2	2.5	1.5	4.0	..	..
October	1.7	0.8	2.4	..	0.1	..	0.1	2.6	1.5	4.1	-0.1	..
November	1.6	0.8	2.4	..	0.1	..	0.2	2.6	1.5	4.1	-0.1	..
December	1.7	0.7	2.3	..	0.2	..	0.2	2.5	1.6	4.1	..	..
1992 —												
January	1.6	0.6	2.2	..	0.1	..	0.2	2.4	1.7	4.1	..	..
February	1.6	0.6	2.3	..	0.1	..	0.2	2.5	1.6	4.1	..	..
March	1.5	0.8	2.3	..	0.1	0.1	0.2	2.5	1.6	4.1	-0.1	..
April	1.4	0.8	2.3	..	0.1	..	0.2	2.4	1.6	4.1	..	..
May	1.5	0.8	2.2	..	0.1	0.1	0.2	2.4	1.7	4.1	..	..
June	1.5	0.8	2.2	..	0.2	..	0.2	2.4	1.7	4.1	..	..
July	1.5	0.7	2.2	..	0.1	0.1	0.2	2.3	1.5	3.8	..	..
August	1.3	0.8	2.1	..	0.2	0.1	0.2	2.3	1.2	3.5	..	..
September	1.3	0.5	1.8	..	0.1	0.1	0.2	2.0	1.2	3.3	..	..
October	1.2	0.6	1.8	..	0.1	0.1	0.2	2.0	1.1	3.1	..	..
November	1.1	0.6	1.7	..	0.1	..	0.1	1.8	1.1	2.9	..	..
December	1.0	0.5	1.5	..	0.1	..	0.1	1.6	1.1	2.7	..	..
1993 —												
January	0.9	0.5	1.4	..	..	..	0.1	1.5	1.0	2.5	-0.1	..
February	0.9	0.4	1.3	..	..	..	..	1.3	1.1	2.3	-0.1	..
March	0.8	0.4	1.2	..	..	..	..	1.3	0.9	2.2	..	..
April	0.8	0.4	1.2	..	..	0.1	0.1	1.3	0.8	2.1	..	..
May	0.9	0.4	1.3	..	..	..	..	1.3	0.8	2.1	-0.1	..
June	0.9	0.5	1.3	..	..	..	0.1	1.4	0.7	2.1	..	..
July	0.9	0.5	1.3	..	..	0.1	..	1.4	0.7	2.1	-0.1	..
August	0.8	0.5	1.3	..	..	..	0.1	1.4	0.7	2.1	..	..
September	0.8	0.5	1.3	..	..	0.1	0.1	1.4	0.7	2.1	..	..
October	0.7	0.5	1.2	..	..	..	0.1	1.3	0.8	2.1	..	..
November	0.7	0.5	1.2	..	..	..	..	1.2	0.9	2.1	..	..
December	0.7	0.5	1.2	..	..	..	..	1.2	0.9	2.1	-0.1	..
1994 —												
January	0.6	0.5	1.1	..	..	..	..	1.2	0.9	2.1	..	..

TABLE 4. LABOUR FORCE STATUS OF CIVILIAN POPULATION AGED 15 AND OVER  
DIFFERENCE (Per cent), 1991 CENSUS-BASED MINUS 1986 CENSUS-BASED DATA  
TASMANIA

Month	Employed			Unemployed				Labour force	Not in labour force	Civilian population aged 15 and over
	Full-time workers	Part-time workers	Total	Looking for full-time work		Looking for part-time work	Total			
				Aged 15-19 looking for first job	Total					
<i>1989 —</i>										
January	0.8	0.8	0.8	-0.9	0.6	1.0	0.7	0.8	0.7	0.8
February	0.9	0.9	0.9	-0.4	0.7	0.5	0.7	0.9	0.7	0.8
March	1.0	0.9	1.0	-0.7	0.8	1.2	0.9	1.0	0.7	0.9
April	1.0	1.0	1.0	-1.3	0.9	1.0	0.9	1.0	0.8	0.9
May	1.1	1.0	1.1	-0.6	0.9	0.8	0.8	1.1	0.8	1.0
June	1.2	1.0	1.1	-0.3	1.0	1.6	1.1	1.1	0.8	1.0
July	1.2	1.1	1.2	-1.0	1.3	0.3	1.2	1.2	0.8	1.0
August	1.2	1.3	1.2	-1.1	1.2	1.0	1.2	1.2	0.8	1.1
September	1.3	1.2	1.3	-0.8	1.0	1.0	1.0	1.2	0.9	1.1
October	1.3	1.3	1.3	-1.0	1.0	1.6	1.1	1.3	0.8	1.1
November	1.2	1.4	1.3	-0.5	0.8	1.1	0.8	1.2	0.8	1.1
December	1.3	1.3	1.3	-0.3	0.9	0.6	0.9	1.2	0.8	1.1
<i>1990 —</i>										
January	1.3	1.4	1.3	0.1	1.0	1.1	1.0	1.3	0.9	1.1
February	1.3	1.5	1.3	-0.7	0.8	1.7	0.9	1.3	1.0	1.2
March	1.3	1.5	1.3	-1.4	0.7	1.8	0.9	1.3	1.0	1.2
April	1.3	1.3	1.3	-0.6	1.1	2.6	1.3	1.3	1.1	1.2
May	1.3	1.5	1.4	-1.0	1.1	1.4	1.1	1.3	1.1	1.3
June	1.3	1.5	1.4	-2.1	1.1	1.8	1.3	1.4	1.1	1.3
July	1.3	1.3	1.3	-2.3	1.0	1.8	1.1	1.3	1.1	1.2
August	1.2	1.4	1.2	-1.3	1.1	2.5	1.3	1.2	1.1	1.2
September	1.1	1.3	1.2	-1.5	0.9	0.8	0.9	1.1	1.1	1.1
October	1.2	1.2	1.2	-2.3	0.7	1.5	0.9	1.1	1.0	1.1
November	1.1	1.4	1.2	-1.5	0.7	0.2	0.6	1.2	1.0	1.1
December	1.2	1.3	1.2	-1.2	0.5	0.7	0.5	1.1	1.0	1.1
<i>1991 —</i>										
January	1.2	1.3	1.2	-1.6	0.1	-0.1	0.1	1.1	1.0	1.1
February	1.1	1.3	1.2	-1.8	0.4	0.7	0.4	1.1	1.0	1.1
March	1.1	1.4	1.2	-1.1	0.5	0.3	0.4	1.1	1.0	1.1
April	1.2	1.4	1.2	-1.4	0.5	1.1	0.6	1.2	1.0	1.1
May	1.1	1.3	1.2	-2.1	0.8	1.5	0.9	1.2	1.1	1.1
June	1.1	1.5	1.2	-1.7	0.5	1.6	0.7	1.2	1.1	1.1
July	1.1	1.5	1.2	-1.3	0.5	1.1	0.6	1.1	1.1	1.1
August	1.1	1.5	1.2	-0.5	0.7	-0.1	0.6	1.1	1.1	1.1
September	1.1	1.5	1.2	-1.3	0.7	0.5	0.7	1.1	1.1	1.1
October	1.1	1.6	1.3	-2.3	0.5	0.9	0.6	1.2	1.1	1.1
November	1.1	1.5	1.3	-1.8	0.6	1.4	0.7	1.2	1.1	1.1
December	1.1	1.4	1.2	-0.3	0.7	1.1	0.8	1.1	1.2	1.1
<i>1992 —</i>										
January	1.1	1.4	1.2	-0.8	0.6	1.1	0.7	1.1	1.2	1.1
February	1.1	1.4	1.2	-0.5	0.7	1.3	0.8	1.1	1.1	1.1
March	1.0	1.8	1.2	-0.7	0.5	1.4	0.7	1.1	1.1	1.1
April	1.0	1.6	1.2	-0.2	0.7	1.0	0.8	1.1	1.1	1.1
May	1.1	1.6	1.2	..	0.7	2.1	0.9	1.2	1.1	1.1
June	1.1	1.5	1.2	-0.4	0.9	1.1	0.9	1.1	1.2	1.2
July	1.1	1.4	1.1	-0.8	0.5	1.7	0.7	1.1	1.0	1.1
August	0.9	1.5	1.1	-0.1	0.8	1.9	1.0	1.1	0.9	1.0
September	0.9	1.1	1.0	0.1	0.7	1.4	0.8	0.9	0.8	0.9
October	0.8	1.2	0.9	-1.4	0.5	1.7	0.7	0.9	0.8	0.9
November	0.8	1.1	0.9	0.2	0.6	-0.5	0.4	0.8	0.8	0.8
December	0.7	1.1	0.8	0.6	0.3	0.7	0.4	0.8	0.8	0.8
<i>1993 —</i>										
January	0.6	1.1	0.8	0.8	0.2	0.6	0.2	0.7	0.7	0.7
February	0.6	0.8	0.7	0.4	..	..	..	0.6	0.7	0.6
March	0.6	0.8	0.6	-0.6	0.1	0.6	0.2	0.6	0.6	0.6
April	0.6	0.8	0.6	0.1	0.2	2.5	0.5	0.6	0.6	0.6
May	0.6	0.8	0.7	-0.6	..	0.9	0.1	0.6	0.6	0.6
June	0.6	0.9	0.7	-0.6	0.1	1.0	0.2	0.6	0.5	0.6
July	0.6	0.9	0.7	-0.2	-0.1	2.1	0.2	0.6	0.5	0.6
August	0.6	1.1	0.7	-0.2	0.1	1.2	0.2	0.6	0.5	0.6
September	0.5	1.1	0.7	0.9	0.2	1.8	0.3	0.6	0.5	0.6
October	0.5	1.0	0.6	-0.7	0.2	0.9	0.3	0.6	0.6	0.6
November	0.5	0.9	0.6	0.1	0.1	1.0	0.2	0.6	0.6	0.6
December	0.5	0.9	0.6	..	0.1	..	0.1	0.5	0.7	0.6
<i>1994 —</i>										
January	0.5	1.0	0.6	..	-0.1	1.7	0.1	0.5	0.6	0.6



TABLE 1. LABOUR FORCE STATUS OF CIVILIAN POPULATION AGED 15 AND OVER  
ESTIMATES BASED ON 1986 CENSUS BENCHMARKS  
NORTHERN TERRITORY

Month	Employed		Unemployed				Labour force	Not in labour force	Civilian population aged 15 and over	Unemployment rate —per cent—	Participation rate	
	Full-time workers	Part-time workers	Total	Looking for full-time work		Looking for part-time work —'000—						
				Aged 15-19 looking for first job	Total							
1989 —												
January	64.2	11.6	75.8	0.3	5.3	1.6	6.8	82.6	28.0	110.7	8.3	74.7
February	65.1	11.4	76.5	0.3	5.9	0.5	6.4	82.9	27.9	110.8	7.7	74.8
March	67.0	11.3	78.3	0.6	5.5	0.6	6.1	84.4	26.5	111.0	7.2	76.1
April	70.9	11.1	82.0	0.2	2.9	1.4	4.3	86.2	24.9	111.1	4.9	77.6
May	64.9	10.5	75.4	0.1	4.0	1.0	5.0	80.4	30.8	111.1	6.2	72.3
June	63.4	11.6	75.0	..	3.2	0.4	3.6	78.6	32.6	111.2	4.6	70.7
July	65.6	10.5	76.1	0.2	3.6	0.7	4.3	80.4	30.8	111.2	5.3	72.3
August	60.6	11.0	71.6	0.5	6.2	0.8	6.9	78.6	32.6	111.2	8.8	70.6
September	61.4	12.1	73.5	0.4	4.0	0.7	4.7	78.2	33.0	111.2	6.1	70.3
October	63.1	10.0	73.1	0.5	3.7	1.5	5.1	78.3	32.5	110.8	6.6	70.6
November	66.4	12.1	78.4	0.4	4.0	0.7	4.7	83.1	27.3	110.5	5.6	75.3
December	65.1	10.7	75.7	0.6	4.4	1.1	5.4	81.2	28.9	110.1	6.7	73.7
1990 —												
January	64.7	11.1	75.8	1.1	6.1	0.8	6.9	82.7	27.4	110.1	8.3	75.1
February	63.0	11.5	74.5	0.5	5.4	1.3	6.7	81.2	29.0	110.2	8.3	73.7
March	61.6	11.9	73.5	0.2	3.9	1.7	5.6	79.0	31.1	110.2	7.1	71.7
April	61.3	11.2	72.6	0.2	3.3	1.1	4.3	76.9	33.3	110.2	5.6	69.8
May	60.9	12.9	73.8	0.4	3.5	1.1	4.6	78.5	31.8	110.3	5.9	71.1
June	61.9	11.3	73.3	0.1	3.8	1.0	4.8	78.1	32.2	110.3	6.1	70.8
July	64.9	10.8	75.8	0.2	4.3	0.9	5.2	81.0	29.5	110.5	6.4	73.3
August	58.6	11.1	69.7	..	4.0	1.3	5.3	75.0	35.7	110.7	7.0	67.7
September	61.0	14.1	75.1	0.3	5.4	1.6	7.0	82.1	28.7	110.8	8.5	74.1
October	61.5	11.5	73.0	0.4	5.2	1.2	6.4	79.4	31.7	111.1	8.1	71.4
November	61.5	13.0	74.5	0.3	4.0	0.8	4.8	79.2	32.2	111.5	6.0	71.1
December	57.0	11.9	68.9	1.1	5.4	1.1	6.4	75.4	36.4	111.7	8.5	67.4
1991 —												
January	57.2	10.9	68.1	0.5	7.2	0.8	8.0	76.2	35.9	112.1	10.5	68.0
February	59.2	10.4	69.7	0.1	6.1	1.3	7.4	77.1	35.3	112.4	9.7	68.6
March	62.4	10.7	73.1	0.4	5.8	1.1	6.9	80.0	32.7	112.7	8.6	71.0
April	62.3	10.9	73.2	0.4	5.6	1.5	7.2	80.4	32.4	112.8	8.9	71.3
May	60.4	11.9	72.3	0.1	6.0	1.3	7.3	79.6	33.3	113.0	9.1	70.5
June	64.6	12.1	76.8	0.2	4.7	0.9	5.6	82.4	30.7	113.1	6.8	72.8
July	62.8	11.4	74.1	0.7	6.3	1.3	7.6	81.7	31.4	113.1	9.3	72.2
August	63.6	11.4	75.0	..	6.5	0.9	7.4	82.4	30.7	113.2	9.0	72.8
September	64.6	12.0	76.5	0.1	6.0	1.5	7.5	84.0	29.2	113.2	8.9	74.2
October	61.6	12.4	74.0	0.2	7.1	1.6	8.7	82.7	30.6	113.2	10.5	73.0
November	58.1	13.8	71.9	0.4	7.0	1.0	8.0	79.9	33.3	113.2	10.1	70.6
December	57.8	13.8	71.6	0.6	7.8	0.3	8.0	79.6	33.6	113.2	10.1	70.3
1992 —												
January	53.5	17.0	70.4	0.8	7.6	0.9	8.5	79.0	34.3	113.3	10.8	69.7
February	52.3	21.3	73.6	0.7	6.9	1.0	7.9	81.6	31.7	113.3	9.7	72.0
March	54.3	21.9	76.2	0.6	6.8	0.4	7.3	83.4	29.8	113.3	8.7	73.7
April	56.3	21.2	77.6	0.3	4.1	0.5	4.6	82.1	31.2	113.3	5.6	72.5
May	57.1	20.2	77.3	0.1	4.3	1.0	5.3	82.6	30.8	113.3	6.4	72.9
June	56.4	20.2	76.5	0.2	4.1	0.8	5.0	81.5	31.9	113.4	6.1	71.9
July	57.4	17.4	74.8	0.6	6.0	1.1	7.1	81.9	31.6	113.5	8.7	72.2
August	57.3	18.3	75.6	0.3	3.8	0.4	4.2	79.8	33.9	113.7	5.2	70.2
September	56.8	18.1	74.9	0.7	5.3	1.3	6.6	81.5	32.3	113.8	8.1	71.6
October	58.1	17.2	75.3	0.4	4.4	0.8	5.2	80.5	33.6	114.0	6.4	70.6
November	59.5	12.1	71.6	0.3	5.9	1.8	7.7	79.2	35.0	114.3	9.7	69.3
December	57.8	12.6	70.4	0.7	6.3	1.5	7.8	78.2	36.3	114.5	10.0	68.3
1993 —												
January	56.7	12.1	68.8	0.3	5.6	1.0	6.6	75.4	39.2	114.6	8.7	65.8
February	57.3	11.4	68.6	0.4	6.7	1.6	8.3	77.0	37.7	114.6	10.8	67.1
March	59.2	12.8	72.0	0.3	6.1	1.9	8.0	80.0	34.7	114.7	10.0	69.8
April	61.0	12.9	73.9	0.2	4.8	1.3	6.1	80.0	34.7	114.8	7.6	69.7
May	57.9	12.4	70.2	0.2	4.4	1.1	5.4	75.7	39.1	114.8	7.2	65.9
June	58.0	14.3	72.3	0.7	4.9	1.0	5.9	78.3	36.6	114.8	7.6	68.2
July	58.0	14.6	72.6	0.1	4.8	1.1	5.9	78.5	36.4	114.9	7.5	68.3
August	57.4	16.7	74.1	0.3	4.9	1.3	6.2	80.4	34.6	114.9	7.7	69.9
September	59.5	18.0	77.5	0.7	4.4	0.9	5.3	82.8	32.2	115.0	6.4	72.0
October	58.3	17.3	75.6	0.3	4.3	0.8	5.0	80.6	34.5	115.1	6.2	70.1
November	56.1	14.6	70.7	0.2	4.6	0.9	5.5	76.2	38.9	115.1	7.2	66.2
December	56.3	14.9	71.2	0.3	4.7	0.8	5.5	76.7	38.5	115.2	7.1	66.6
1994 —												
January	51.7	13.2	64.9	0.2	5.4	0.8	6.2	71.1	44.3	115.4	8.7	61.6

TABLE 2. LABOUR FORCE STATUS OF CIVILIAN POPULATION AGED 15 AND OVER  
ESTIMATES BASED ON 1991 CENSUS BENCHMARKS  
NORTHERN TERRITORY

Month	Employed		Unemployed				Labour force	Not in labour force	Civilian population aged 15 and over	Unemployment rate —per—	Participation rate —cent—	
	Full-time workers	Part-time workers	Total	Looking for full-time work		Looking for part-time work —'000—						
				Aged 15-19 looking for first job	Total							
1989 —												
January	66.0	11.8	77.8	0.3	5.5	1.6	7.1	84.9	28.4	113.3	8.4	74.9
February	66.7	11.7	78.4	0.4	6.1	0.5	6.6	85.0	28.4	113.3	7.7	75.0
March	68.8	11.6	80.4	0.7	5.7	0.6	6.3	86.6	26.7	113.4	7.2	76.4
April	72.7	11.4	84.1	0.2	2.9	1.4	4.3	88.4	25.2	113.5	4.9	77.8
May	66.5	10.8	77.3	0.1	4.1	1.0	5.1	82.4	31.3	113.7	6.2	72.5
June	65.2	11.9	77.1	..	3.3	0.4	3.7	80.8	33.0	113.8	4.6	71.0
July	67.5	10.7	78.3	0.2	3.7	0.7	4.4	82.7	31.2	113.9	5.3	72.6
August	62.6	11.2	73.8	0.6	6.3	0.8	7.1	80.9	33.0	114.0	8.8	71.0
September	63.4	12.3	75.7	0.4	4.2	0.7	4.9	80.6	33.4	114.1	6.1	70.7
October	65.4	10.3	75.7	0.5	3.8	1.5	5.3	81.0	33.2	114.2	6.6	70.9
November	69.1	12.4	81.6	0.4	4.1	0.7	4.9	86.4	27.9	114.3	5.6	75.6
December	68.2	11.1	79.3	0.6	4.5	1.1	5.6	84.9	29.5	114.4	6.6	74.2
1990 —												
January	67.9	11.6	79.5	1.1	6.4	0.8	7.2	86.7	27.9	114.7	8.3	75.6
February	66.4	11.8	78.2	0.5	5.7	1.3	7.0	85.3	29.6	114.9	8.3	74.2
March	64.9	12.4	77.3	0.2	4.0	1.8	5.8	83.2	31.9	115.1	7.0	72.3
April	64.8	11.7	76.5	0.2	3.4	1.1	4.5	81.0	34.3	115.3	5.5	70.3
May	64.6	13.4	78.0	0.4	3.7	1.1	4.8	82.8	32.7	115.5	5.8	71.7
June	65.6	11.8	77.5	0.1	4.0	1.1	5.1	82.6	33.1	115.7	6.1	71.4
July	68.7	11.3	80.0	0.3	4.7	0.9	5.6	85.6	30.4	115.9	6.5	73.8
August	62.0	11.6	73.6	..	4.3	1.3	5.6	79.2	36.9	116.1	7.1	68.2
September	64.5	14.6	79.1	0.3	5.7	1.7	7.4	86.5	29.8	116.3	8.5	74.4
October	65.0	11.9	77.0	0.4	5.5	1.2	6.8	83.7	32.8	116.5	8.1	71.9
November	64.9	13.4	78.4	0.3	4.2	0.8	5.0	83.4	33.3	116.7	6.0	71.4
December	60.1	12.5	72.6	1.1	5.6	1.2	6.7	79.3	37.5	116.8	8.5	67.9
1991 —												
January	60.4	11.3	71.7	0.5	7.5	0.8	8.4	80.1	36.9	117.0	10.4	68.4
February	62.6	10.7	73.3	0.1	6.5	1.4	7.8	81.1	36.0	117.1	9.7	69.3
March	65.8	11.0	76.8	0.4	6.1	1.2	7.3	84.0	33.2	117.3	8.6	71.7
April	65.6	11.3	76.9	0.4	5.9	1.6	7.5	84.3	33.0	117.3	8.9	71.9
May	63.7	12.4	76.1	0.1	6.3	1.3	7.6	83.7	33.7	117.4	9.1	71.3
June	68.1	12.5	80.6	0.2	4.9	0.9	5.8	86.4	31.1	117.5	6.7	73.5
July	66.3	11.8	78.1	0.7	6.6	1.3	7.9	86.0	31.6	117.6	9.2	73.1
August	67.2	11.7	79.0	..	6.8	0.9	7.8	86.8	30.9	117.7	9.0	73.7
September	68.3	12.5	80.7	0.1	6.2	1.6	7.8	88.5	29.3	117.8	8.8	75.1
October	65.1	12.8	77.9	0.2	7.5	1.6	9.1	87.1	30.9	117.9	10.5	73.8
November	61.5	14.4	75.9	0.4	7.4	1.1	8.5	84.4	33.7	118.1	10.1	71.5
December	61.3	14.2	75.5	0.7	8.2	0.3	8.5	84.0	34.2	118.2	10.1	71.1
1992 —												
January	56.8	17.6	74.5	0.9	8.1	0.9	9.0	83.5	34.8	118.3	10.8	70.6
February	55.5	22.2	77.8	0.8	7.4	1.1	8.4	86.2	32.1	118.3	9.8	72.8
March	57.6	22.8	80.4	0.6	7.2	0.5	7.7	88.1	30.3	118.4	8.7	74.4
April	59.9	22.1	82.0	0.4	4.3	0.5	4.8	86.8	31.7	118.5	5.5	73.3
May	60.7	21.1	81.8	0.1	4.5	1.1	5.6	87.3	31.2	118.6	6.4	73.7
June	59.9	21.1	81.0	0.2	4.4	0.9	5.3	86.3	32.4	118.6	6.1	72.7
July	61.0	18.2	79.2	0.7	6.3	1.2	7.5	86.7	32.0	118.8	8.7	73.0
August	60.8	19.2	80.0	0.3	4.0	0.4	4.4	84.4	34.4	118.8	5.2	71.0
September	60.2	19.0	79.2	0.8	5.6	1.3	6.9	86.1	32.8	118.9	8.0	72.4
October	61.5	18.1	79.6	0.4	4.7	0.8	5.5	85.1	34.0	119.0	6.5	71.5
November	63.0	12.6	75.6	0.4	6.2	1.8	8.0	83.6	35.5	119.1	9.6	70.2
December	61.2	13.1	74.3	0.7	6.6	1.6	8.2	82.5	36.7	119.2	9.9	69.2
1993 —												
January	59.9	12.6	72.6	0.3	5.9	1.0	6.9	79.5	39.6	119.1	8.7	66.7
February	60.4	11.9	72.3	0.4	7.0	1.7	8.7	80.9	38.0	119.0	10.7	68.0
March	62.4	13.1	75.5	0.3	6.4	2.0	8.4	83.9	35.0	118.9	10.0	70.6
April	64.3	13.3	77.6	0.2	5.0	1.3	6.3	83.9	35.0	119.0	7.6	70.5
May	61.0	12.8	73.8	0.2	4.5	1.1	5.6	79.4	39.6	119.1	7.0	66.7
June	61.2	14.8	76.0	0.7	5.1	1.1	6.2	82.3	36.9	119.2	7.6	69.0
July	61.1	15.3	76.3	0.1	5.1	1.1	6.2	82.5	36.7	119.3	7.5	69.2
August	60.5	17.5	78.0	0.3	5.2	1.4	6.5	84.5	34.9	119.4	7.7	70.8
September	62.8	18.7	81.5	0.7	4.7	1.0	5.7	87.2	32.3	119.5	6.5	72.9
October	61.6	18.1	79.8	0.3	4.4	0.8	5.2	85.0	34.7	119.7	6.2	71.0
November	59.3	15.4	74.6	0.2	4.8	1.0	5.8	80.4	39.3	119.8	7.2	67.1
December	59.6	15.7	75.3	0.3	4.9	0.8	5.7	81.0	38.9	119.9	7.1	67.6
1994 —												
January	54.7	13.9	68.5	0.2	5.6	0.9	6.5	75.0	45.0	120.1	8.7	62.5

TABLE 3. LABOUR FORCE STATUS OF CIVILIAN POPULATION AGED 15 AND OVER  
DIFFERENCE ('000), 1991 CENSUS-BASED MINUS 1986 CENSUS-BASED DATA  
NORTHERN TERRITORY

Month	Employed		Unemployed				Labour force	Not in labour force	Civilian population aged 15 and over	Unemployment rate —percentage points—	Participation rate	
	Full-time workers	Part-time workers	Total	Looking for full-time work		Looking for part-time work —'000—						
				Aged 15-19 looking for first job	Total							
1989 —												
January	1.8	0.2	2.0	..	0.2	..	0.3	2.2	0.4	2.6	0.1	0.3
February	1.6	0.3	1.9	..	0.2	..	0.2	2.1	0.4	2.5	..	0.2
March	1.8	0.3	2.0	..	0.2	..	0.2	2.2	0.2	2.4	..	0.3
April	1.8	0.3	2.1	..	..	..	..	2.1	0.3	2.4	-0.1	0.2
May	1.7	0.2	1.9	..	0.1	..	0.1	2.0	0.5	2.5	..	0.2
June	1.8	0.3	2.0	..	0.1	..	0.1	2.1	0.5	2.6	..	0.3
July	1.9	0.2	2.2	..	0.1	..	0.1	2.3	0.4	2.7	..	0.3
August	2.0	0.2	2.2	..	0.2	..	0.2	2.4	0.4	2.8	..	0.4
September	2.1	0.2	2.3	..	0.1	..	0.1	2.4	0.4	2.8	..	0.4
October	2.3	0.2	2.5	..	0.1	..	0.2	2.7	0.7	3.3	..	0.3
November	2.7	0.4	3.1	..	0.1	..	0.1	3.3	0.6	3.8	..	0.3
December	3.2	0.4	3.6	..	0.1	..	0.2	3.8	0.6	4.3	-0.1	0.5
1990 —												
January	3.2	0.5	3.7	..	0.3	..	0.3	4.0	0.5	4.5	..	0.5
February	3.3	0.4	3.7	..	0.3	..	0.3	4.0	0.6	4.7	..	0.5
March	3.3	0.5	3.9	..	0.2	0.1	0.3	4.1	0.8	4.9	..	0.5
April	3.4	0.5	3.9	..	0.1	..	0.2	4.1	0.9	5.1	-0.1	0.5
May	3.6	0.5	4.1	..	0.1	..	0.2	4.3	0.9	5.2	-0.1	0.5
June	3.7	0.5	4.2	..	0.2	0.1	0.3	4.5	0.9	5.4	..	0.6
July	3.8	0.4	4.2	..	0.3	..	0.3	4.5	0.9	5.4	0.1	0.5
August	3.4	0.5	3.9	..	0.3	0.1	0.3	4.3	1.2	5.5	..	0.5
September	3.6	0.5	4.0	..	0.3	0.1	0.4	4.4	1.1	5.5	..	0.3
October	3.5	0.5	4.0	..	0.3	..	0.4	4.3	1.0	5.4	..	0.4
November	3.4	0.5	3.9	..	0.2	..	0.2	4.1	1.1	5.2	-0.1	0.3
December	3.1	0.6	3.7	..	0.2	0.1	0.3	4.0	1.1	5.1	-0.1	0.5
1991 —												
January	3.2	0.4	3.5	..	0.3	..	0.3	3.9	1.0	4.9	-0.1	0.5
February	3.3	0.3	3.6	..	0.3	..	0.4	4.0	0.7	4.7	..	0.7
March	3.4	0.3	3.7	..	0.3	..	0.3	4.1	0.5	4.6	..	0.7
April	3.3	0.3	3.6	..	0.2	0.1	0.3	3.9	0.6	4.5	-0.1	0.6
May	3.3	0.4	3.7	..	0.3	..	0.3	4.1	0.4	4.4	..	0.8
June	3.5	0.3	3.8	..	0.2	..	0.2	4.0	0.3	4.4	..	0.7
July	3.5	0.4	4.0	..	0.3	..	0.3	4.3	0.1	4.4	-0.1	0.9
August	3.6	0.4	4.0	..	0.3	..	0.4	4.3	0.2	4.5	..	0.9
September	3.7	0.5	4.2	..	0.2	..	0.3	4.5	0.1	4.6	-0.1	0.9
October	3.5	0.4	3.9	..	0.4	0.1	0.5	4.4	0.3	4.7	..	0.8
November	3.4	0.5	4.0	..	0.4	..	0.5	4.4	0.4	4.8	..	0.9
December	3.5	0.4	4.0	..	0.5	..	0.5	4.4	0.6	5.0	..	0.8
1992 —												
January	3.4	0.7	4.0	..	0.5	..	0.5	4.5	0.5	5.0	..	0.9
February	3.2	0.9	4.1	..	0.4	..	0.5	4.6	0.5	5.1	..	0.8
March	3.3	0.9	4.3	..	0.4	..	0.4	4.7	0.5	5.1	..	0.8
April	3.5	0.9	4.4	..	0.2	..	0.3	4.7	0.5	5.2	..	0.8
May	3.6	0.9	4.5	..	0.2	0.1	0.3	4.8	0.5	5.2	..	0.8
June	3.5	0.9	4.4	..	0.3	0.1	0.3	4.8	0.5	5.3	..	0.8
July	3.5	0.8	4.4	..	0.3	0.1	0.4	4.8	0.4	5.2	..	0.9
August	3.5	0.9	4.4	..	0.2	..	0.3	4.6	0.5	5.2	..	0.8
September	3.4	0.9	4.3	..	0.3	0.1	0.3	4.6	0.5	5.1	..	0.8
October	3.4	0.8	4.3	..	0.3	..	0.3	4.6	0.4	5.0	..	0.9
November	3.5	0.5	4.0	..	0.3	0.1	0.3	4.4	0.4	4.8	-0.1	0.9
December	3.4	0.4	3.9	..	0.3	0.1	0.4	4.3	0.4	4.7	..	0.9
1993 —												
January	3.2	0.5	3.8	..	0.3	..	0.3	4.1	0.4	4.5	-0.1	0.9
February	3.1	0.5	3.6	..	0.3	..	0.3	3.9	0.4	4.3	-0.1	0.9
March	3.2	0.3	3.5	..	0.3	0.1	0.4	3.9	0.3	4.2	..	0.8
April	3.2	0.4	3.6	..	0.2	..	0.3	3.9	0.3	4.2	..	0.8
May	3.1	0.5	3.6	..	0.1	..	0.1	3.8	0.5	4.3	-0.1	0.8
June	3.2	0.5	3.7	..	0.2	0.1	0.3	4.0	0.3	4.3	..	0.9
July	3.1	0.6	3.7	..	0.3	..	0.3	4.1	0.3	4.4	..	0.9
August	3.0	0.8	3.8	..	0.3	..	0.3	4.1	0.3	4.4	..	0.8
September	3.3	0.7	4.0	..	0.3	..	0.3	4.3	0.2	4.5	0.1	0.9
October	3.3	0.8	4.1	..	0.2	..	0.2	4.4	0.2	4.6	-0.1	1.0
November	3.2	0.7	3.9	..	0.3	..	0.3	4.2	0.4	4.6	..	1.0
December	3.3	0.8	4.1	..	0.2	..	0.2	4.3	0.4	4.7	-0.1	1.0
1994 —												
January	3.0	0.6	3.6	..	0.3	..	0.3	3.9	0.7	4.7	..	0.9

1 Rounded to zero.

TABLE 4. LABOUR FORCE STATUS OF CIVILIAN POPULATION AGED 15 AND OVER  
DIFFERENCE (Per cent), 1991 CENSUS-BASED MINUS 1986 CENSUS-BASED DATA  
NORTHERN TERRITORY

Month	Employed			Unemployed				Labour force	Not in labour force	Civilian population aged 15 and over
	Full-time workers	Part-time workers	Total	Looking for full-time work		Looking for part-time work	Total			
				Aged 15-19 looking for first job	Total					
1989 —										
January	2.8	1.8	2.6	6.7	4.1	2.3	3.7	2.7	1.4	2.4
February	2.5	2.4	2.5	2.3	2.7	2.6	2.7	2.5	1.6	2.3
March	2.6	2.3	2.6	5.1	2.9	-0.7	2.6	2.6	0.7	2.1
April	2.5	2.8	2.6	2.3	1.2	0.7	1.1	2.5	1.2	2.2
May	2.6	2.0	2.5	-0.7	2.5	2.9	2.6	2.5	1.7	2.3
June	2.8	2.1	2.7	1.0	3.4	0.9	3.1	2.7	1.4	2.3
July	3.0	2.1	2.8	-0.3	2.7	2.9	2.7	2.8	1.3	2.4
August	3.2	2.0	3.0	2.7	2.7	4.0	2.8	3.0	1.2	2.5
September	3.3	1.6	3.1	2.9	3.2	3.1	3.2	3.1	1.3	2.5
October	3.6	2.3	3.4	2.9	3.7	2.8	3.5	3.4	2.0	3.0
November	4.1	3.0	4.0	2.7	3.2	3.7	3.3	3.9	2.1	3.5
December	4.9	3.8	4.7	4.1	3.0	3.2	3.0	4.6	2.0	3.9
1990 —										
January	5.0	4.4	4.9	3.9	4.7	3.4	4.5	4.9	1.8	4.1
February	5.3	3.3	5.0	4.5	5.2	4.2	5.0	5.0	2.3	4.3
March	5.4	4.6	5.3	4.5	4.6	4.0	4.4	5.2	2.5	4.4
April	5.6	4.7	5.4	4.0	3.5	4.0	3.6	5.3	2.8	4.6
May	6.0	3.9	5.6	0.6	4.1	4.9	4.3	5.5	2.8	4.7
June	6.0	4.4	5.7	5.0	6.0	6.1	6.0	5.8	2.8	4.9
July	5.8	3.9	5.5	6.3	7.1	5.1	6.7	5.6	3.0	4.9
August	5.9	4.2	5.6	1.0	7.1	4.5	6.5	5.7	3.4	4.9
September	5.8	3.4	5.4	0.4	6.1	4.7	5.8	5.4	3.7	5.0
October	5.7	4.1	5.4	1.0	6.1	3.1	5.5	5.4	3.3	4.8
November	5.6	3.8	5.3	3.3	4.1	3.4	4.0	5.2	3.4	4.7
December	5.5	4.7	5.4	3.7	3.7	7.2	4.3	5.3	3.0	4.5
1991 —										
January	5.5	3.3	5.2	4.4	4.4	4.1	4.3	5.1	2.9	4.4
February	5.6	2.9	5.2	6.1	5.5	3.5	5.2	5.2	2.0	4.2
March	5.4	3.3	5.1	4.1	5.7	2.3	5.1	5.1	1.6	4.1
April	5.3	3.1	5.0	6.1	4.1	4.5	4.2	4.9	1.7	4.0
May	5.5	3.5	5.2	6.4	4.8	3.8	4.6	5.1	1.1	3.9
June	5.4	2.8	4.9	6.8	4.6	1.7	4.2	4.9	1.1	3.9
July	5.7	3.9	5.4	4.9	4.4	2.1	4.0	5.3	0.5	3.9
August	5.6	3.3	5.3	1.0	5.2	2.0	4.8	5.3	0.6	4.0
September	5.8	4.0	5.5	5.1	3.8	3.0	3.6	5.3	0.4	4.1
October	5.7	3.5	5.3	1.7	5.6	4.1	5.3	5.3	1.0	4.2
November	5.9	3.8	5.5	2.6	6.1	4.2	5.9	5.6	1.2	4.3
December	6.1	3.2	5.5	4.8	5.9	-0.1	5.7	5.5	1.7	4.4
1992 —										
January	6.3	4.0	5.7	4.5	6.0	5.2	5.9	5.8	1.4	4.4
February	6.1	4.4	5.6	4.2	6.1	5.2	6.0	5.6	1.5	4.5
March	6.1	4.3	5.6	3.4	5.6	3.7	5.5	5.6	1.6	4.5
April	6.3	4.3	5.7	6.4	5.4	5.7	5.5	5.7	1.5	4.6
May	6.3	4.4	5.8	-2.4	4.7	7.6	5.3	5.8	1.5	4.6
June	6.3	4.6	5.8	6.1	6.5	7.0	6.6	5.9	1.5	4.6
July	6.1	4.8	5.8	5.7	5.7	8.0	6.0	5.8	1.3	4.6
August	6.0	5.0	5.8	5.8	6.4	5.2	6.3	5.8	1.5	4.5
September	6.0	4.9	5.8	3.4	5.0	5.0	5.0	5.7	1.5	4.5
October	5.9	4.8	5.6	2.7	6.2	5.3	6.1	5.7	1.2	4.3
November	6.0	4.1	5.7	3.2	4.8	4.0	4.6	5.5	1.2	4.2
December	6.0	3.4	5.5	2.1	5.2	4.2	5.0	5.5	1.1	4.1
1993 —										
January	5.7	4.4	5.5	3.7	4.7	4.5	4.7	5.4	1.1	3.9
February	5.5	4.2	5.3	0.1	4.5	2.2	4.0	5.1	1.0	3.8
March	5.3	2.7	4.9	2.0	4.7	3.6	4.4	4.8	0.9	3.6
April	5.3	3.2	4.9	2.8	5.0	2.1	4.4	4.9	0.9	3.7
May	5.4	3.9	5.1	-3.2	3.2	1.3	2.8	5.0	1.3	3.7
June	5.5	3.6	5.1	1.2	4.9	5.5	5.0	5.1	0.9	3.8
July	5.3	4.4	5.1	8.7	5.9	4.6	5.7	5.2	1.0	3.8
August	5.2	4.8	5.1	3.5	5.4	3.7	5.1	5.1	0.9	3.9
September	5.5	4.1	5.2	4.8	6.8	4.4	6.4	5.2	0.5	3.9
October	5.7	4.8	5.5	2.8	4.1	5.0	4.3	5.4	0.6	4.0
November	5.7	5.0	5.5	3.6	5.5	5.2	5.4	5.5	1.1	4.0
December	5.8	5.4	5.7	3.1	4.0	5.1	4.2	5.6	1.0	4.1
1994 —										
January	5.7	4.9	5.6	4.4	5.4	5.6	5.4	5.5	1.6	4.0

TABLE 1. LABOUR FORCE STATUS OF CIVILIAN POPULATION AGED 15 AND OVER  
ESTIMATES BASED ON 1986 CENSUS BENCHMARKS  
AUSTRALIAN CAPITAL TERRITORY

Month	Employed		Total	Unemployed				Labour force	Not in labour force	Civilian population aged 15 and over	Unemployment rate —per cent—	Participation rate
	Full-time workers	Part-time workers		Looking for full-time work		Looking for part-time work	Total					
				Aged 15-19 looking for first job	Total							
1989 —												
January	111.2	23.7	134.9	1.1	5.9	2.3	8.2	143.1	59.2	202.3	5.8	70.7
February	110.4	27.5	138.0	0.5	5.1	3.4	8.6	146.5	56.2	202.7	5.8	72.3
March	109.7	32.0	141.8	0.2	4.7	3.7	8.5	150.2	52.9	203.1	5.6	73.9
April	107.6	33.3	141.0	0.5	5.3	3.6	8.9	149.9	53.8	203.7	5.9	73.6
May	108.0	36.0	144.0	0.5	4.9	2.9	7.8	151.8	52.5	204.3	5.1	74.3
June	111.9	33.6	145.6	0.2	4.5	2.9	7.4	153.0	52.0	204.9	4.8	74.6
July	112.3	32.0	144.3	0.4	5.3	3.3	8.6	152.8	52.5	205.3	5.6	74.4
August	110.9	33.7	144.6	0.4	5.0	1.5	6.5	151.1	54.6	205.7	4.3	73.4
September	112.2	34.1	146.3	0.1	4.6	3.5	8.1	154.4	51.7	206.1	5.3	74.9
October	111.4	32.4	143.8	0.3	3.2	3.7	6.9	150.7	56.0	206.7	4.6	72.9
November	117.5	29.6	147.1	0.3	4.3	2.1	6.4	153.5	53.8	207.3	4.1	74.0
December	119.8	28.9	148.6	1.5	7.0	2.6	9.6	158.2	49.6	207.9	6.0	76.1
1990 —												
January	119.1	23.2	142.3	1.6	7.8	2.8	10.6	153.0	55.4	208.4	6.9	73.4
February	118.7	27.8	146.4	0.8	5.6	3.8	9.4	155.9	53.0	208.9	6.1	74.6
March	116.1	29.2	145.3	0.7	5.9	3.9	9.8	155.1	54.3	209.4	6.3	74.1
April	116.2	30.3	146.4	0.2	4.6	3.1	7.7	154.2	55.7	209.9	5.0	73.4
May	117.9	31.4	149.3	0.1	4.0	4.2	8.2	157.5	52.9	210.4	5.2	74.9
June	117.0	30.4	147.4	0.1	5.5	2.3	7.8	155.2	55.7	210.9	5.0	73.6
July	121.6	27.4	149.0	..	5.4	2.0	7.4	156.4	55.0	211.4	4.7	74.0
August	119.0	27.5	146.5	0.5	5.2	2.1	7.3	153.8	58.2	212.0	4.8	72.5
September	122.4	27.5	150.0	0.5	3.8	3.1	6.9	156.8	55.8	212.6	4.4	73.8
October	119.9	28.6	148.6	0.6	5.5	3.1	8.5	157.1	56.2	213.3	5.4	73.7
November	120.2	28.4	148.6	0.6	6.4	2.0	8.4	157.0	56.8	213.9	5.4	73.4
December	124.4	26.3	150.7	1.9	8.2	1.8	10.0	160.7	53.8	214.5	6.2	74.9
1991 —												
January	123.3	23.1	146.4	1.9	10.1	2.8	12.9	159.3	55.8	215.1	8.1	74.0
February	122.5	27.1	149.7	0.7	8.7	3.7	12.4	162.1	53.6	215.7	7.7	75.1
March	122.9	30.1	153.1	0.6	6.7	2.6	9.2	162.3	54.0	216.3	5.7	75.0
April	122.1	30.1	152.2	1.0	7.8	2.9	10.7	162.9	54.1	217.1	6.6	75.0
May	119.9	29.2	149.1	0.4	7.1	2.8	9.9	159.0	58.8	217.8	6.2	73.0
June	118.7	32.8	151.5	0.2	5.7	3.7	9.4	160.9	57.7	218.6	5.8	73.6
July	120.4	29.5	149.9	0.3	6.4	4.2	10.6	160.5	58.7	219.3	6.6	73.2
August	118.2	31.7	149.9	0.7	5.8	3.6	9.4	159.3	60.6	219.9	5.9	72.5
September	118.4	33.0	151.4	0.2	5.9	4.1	10.0	161.4	59.1	220.5	6.2	73.2
October	115.9	33.2	149.0	0.5	5.6	4.5	10.1	159.1	62.1	221.2	6.3	71.9
November	115.7	34.4	150.1	0.1	5.4	3.5	8.9	159.1	62.9	221.9	5.6	71.7
December	118.3	32.6	150.8	0.9	7.7	4.3	12.0	162.8	59.8	222.6	7.4	73.1
1992 —												
January	115.3	30.2	145.5	0.4	9.6	3.4	13.0	158.5	64.6	223.1	8.2	71.0
February	117.1	32.1	149.3	0.8	10.3	3.4	13.7	163.0	60.6	223.6	8.4	72.9
March	117.4	33.3	150.7	0.2	10.1	4.4	14.5	165.2	58.8	224.0	8.8	73.7
April	114.6	33.2	147.8	0.3	9.3	3.3	12.6	160.4	64.1	224.5	7.9	71.4
May	115.5	34.9	150.4	0.1	7.4	3.2	10.6	161.0	64.0	225.0	6.6	71.5
June	117.0	33.0	150.0	0.3	7.0	4.9	11.8	161.9	63.6	225.5	7.3	71.8
July	118.3	32.5	150.8	0.4	9.5	4.3	13.8	164.6	61.4	226.0	8.4	72.8
August	115.8	35.4	151.2	0.6	7.8	4.9	12.7	163.9	62.7	226.6	7.8	72.3
September	114.4	39.0	153.4	1.5	10.0	3.9	13.9	167.3	59.8	227.1	8.3	73.7
October	117.1	38.5	155.7	1.3	8.0	4.2	12.1	167.8	59.8	227.6	7.2	73.7
November	120.7	36.1	156.8	1.5	7.9	2.6	10.5	167.3	60.6	228.0	6.3	73.4
December	126.1	33.9	160.0	1.9	8.5	2.7	11.1	171.1	57.3	228.4	6.5	74.9
1993 —												
January	126.2	30.9	157.1	2.0	10.9	2.4	13.3	170.4	58.4	228.8	7.8	74.5
February	124.4	32.2	156.7	1.5	11.7	3.4	15.1	171.7	57.5	229.3	8.8	74.9
March	123.8	34.3	158.0	1.0	8.9	5.5	14.4	172.4	57.3	229.7	8.3	75.1
April	121.3	35.3	156.6	0.7	7.6	3.9	11.5	168.1	62.3	230.4	6.9	73.0
May	123.7	36.0	159.6	0.6	7.6	2.9	10.4	170.1	61.0	231.0	6.1	73.6
June	122.1	34.8	157.0	0.4	9.2	2.8	12.0	169.0	62.7	231.7	7.1	72.9
July	121.1	36.4	157.5	0.5	9.0	2.8	11.8	169.3	62.4	231.7	7.0	73.1
August	120.7	37.9	158.6	0.7	9.2	2.4	11.5	170.1	62.1	232.3	6.8	73.2
September	121.0	38.7	159.8	1.1	8.9	3.9	12.8	172.5	60.3	232.8	7.4	74.1
October	123.2	37.4	160.5	0.8	8.1	3.5	11.6	172.2	61.3	233.4	6.8	73.8
November	120.9	39.8	160.8	0.4	8.3	2.7	11.0	171.8	62.3	234.1	6.4	73.4
December	124.9	38.9	163.8	1.2	9.6	2.9	12.5	176.3	58.5	234.8	7.1	75.1
1994 —												
January	124.6	34.5	159.1	1.4	12.3	3.1	15.4	174.5	60.8	235.3	8.8	74.2

TABLE 2. LABOUR FORCE STATUS OF CIVILIAN POPULATION AGED 15 AND OVER  
ESTIMATES BASED ON 1991 CENSUS BENCHMARKS  
AUSTRALIAN CAPITAL TERRITORY

Month	Employed			Unemployed				Labour force	Not in labour force	Civilian population aged 15 and over	Unemployment rate — per cent —	Participation rate
	Full-time workers	Part-time workers	Total	Looking for full-time work		Looking for part-time work	Total					
				Aged 15-19 looking for first job	Total							
				— '000 —								
1989 —												
January	109.0	23.6	132.5	1.1	5.7	2.4	8.1	140.6	59.6	200.2	5.7	70.2
February	108.3	27.4	135.7	0.5	4.9	3.4	8.4	144.1	56.6	200.6	5.8	71.8
March	107.8	31.8	139.7	0.2	4.6	3.7	8.3	147.9	53.1	201.0	5.6	73.6
April	105.6	33.0	138.7	0.5	5.1	3.5	8.7	147.3	54.1	201.4	5.9	73.1
May	105.9	35.7	141.6	0.5	4.7	2.9	7.6	149.1	52.7	201.8	5.1	73.9
June	109.6	33.2	142.8	0.2	4.3	2.9	7.2	150.1	52.2	202.2	4.8	74.2
July	109.6	31.8	141.4	0.5	5.1	3.2	8.3	149.7	52.8	202.6	5.6	73.9
August	108.2	33.2	141.4	0.5	4.9	1.5	6.4	147.8	55.1	202.9	4.3	72.9
September	109.3	33.7	143.1	0.1	4.4	3.5	7.8	150.9	52.3	203.2	5.2	74.3
October	108.4	32.0	140.5	0.3	3.0	3.7	6.7	147.2	56.5	203.7	4.6	72.3
November	114.2	29.4	143.6	0.4	4.1	2.1	6.2	149.8	54.3	204.2	4.2	73.4
December	116.4	28.8	145.2	1.6	6.6	2.6	9.2	154.4	50.2	204.6	6.0	75.5
1990 —												
January	115.6	23.2	138.8	1.7	7.5	2.7	10.2	149.0	56.1	205.1	6.9	72.6
February	115.2	27.6	142.7	0.8	5.4	3.8	9.2	152.0	53.6	205.6	6.1	73.9
March	112.6	29.0	141.6	0.8	5.7	3.9	9.6	151.2	54.9	206.1	6.4	73.4
April	112.6	30.0	142.7	0.3	4.4	3.1	7.5	150.2	56.4	206.6	5.0	72.7
May	114.3	31.2	145.5	0.1	3.8	4.2	8.0	153.5	53.7	207.2	5.2	74.1
June	113.5	30.4	143.9	0.1	5.2	2.2	7.5	151.3	56.3	207.7	4.9	72.9
July	117.8	27.4	145.2	..	5.1	2.0	7.1	152.3	55.8	208.1	4.7	73.2
August	115.3	27.4	142.7	0.5	5.0	2.1	7.0	149.8	58.8	208.6	4.7	71.8
September	118.6	27.6	146.2	0.5	3.7	3.0	6.7	152.9	56.1	209.0	4.4	73.1
October	116.1	28.5	144.6	0.6	5.2	3.1	8.3	153.0	56.7	209.6	5.4	73.0
November	116.3	28.4	144.7	0.6	6.1	2.1	8.2	152.9	57.3	210.2	5.4	72.7
December	120.2	26.4	146.6	2.0	7.8	1.9	9.7	156.3	54.5	210.8	6.2	74.2
1991 —												
January	119.0	23.1	142.0	1.9	9.7	2.9	12.6	154.6	56.5	211.1	8.1	73.2
February	118.1	27.1	145.2	0.7	8.2	3.8	12.0	157.2	54.2	211.4	7.6	74.4
March	118.3	29.9	148.3	0.6	6.3	2.6	8.9	157.2	54.6	211.7	5.7	74.2
April	117.3	29.8	147.1	1.0	7.4	2.9	10.3	157.4	54.9	212.3	6.6	74.1
May	115.0	28.9	143.9	0.5	6.6	2.8	9.5	153.4	59.5	212.8	6.2	72.1
June	113.3	32.3	145.7	0.2	5.4	3.8	9.2	154.9	58.5	213.3	5.9	72.6
July	114.8	29.3	144.0	0.4	6.0	4.3	10.3	154.3	59.5	213.8	6.7	72.2
August	112.7	31.3	143.9	0.8	5.5	3.6	9.1	153.0	61.2	214.2	5.9	71.4
September	112.7	32.6	145.4	0.2	5.4	4.1	9.5	154.9	59.7	214.6	6.1	72.2
October	110.3	32.7	143.1	0.5	5.2	4.4	9.6	152.7	62.4	215.1	6.3	71.0
November	110.0	33.8	143.8	0.1	5.1	3.5	8.6	152.3	63.3	215.6	5.6	70.6
December	112.2	32.2	144.4	1.0	7.3	4.4	11.6	156.0	60.2	216.2	7.5	72.2
1992 —												
January	109.5	29.9	139.4	0.5	9.2	3.2	12.4	151.8	64.8	216.6	8.2	70.1
February	111.2	31.7	142.9	0.9	9.9	3.4	13.3	156.2	60.9	217.1	8.5	72.0
March	111.3	32.9	144.2	0.2	9.5	4.4	13.9	158.1	59.4	217.6	8.8	72.7
April	108.5	32.7	141.1	0.3	8.8	3.2	12.1	153.2	64.7	217.9	7.9	70.3
May	109.4	34.3	143.7	0.1	6.9	3.2	10.1	153.8	64.4	218.3	6.6	70.5
June	110.7	32.2	142.8	0.3	6.7	4.9	11.6	154.4	64.2	218.6	7.5	70.6
July	111.8	31.8	143.6	0.4	9.0	4.3	13.3	156.9	62.0	218.9	8.5	71.7
August	109.2	34.6	143.8	0.6	7.5	4.8	12.3	156.0	63.1	219.1	7.9	71.2
September	107.7	38.2	145.9	1.6	9.5	3.9	13.5	159.4	60.0	219.4	8.4	72.7
October	110.4	37.8	148.2	1.3	7.6	4.1	11.8	160.0	59.9	219.9	7.4	72.8
November	114.1	35.4	149.5	1.5	7.7	2.6	10.3	159.8	60.7	220.5	6.4	72.5
December	119.4	33.4	152.8	2.0	8.3	2.6	10.9	163.7	57.4	221.1	6.7	74.0
1993 —												
January	119.5	30.6	150.1	2.1	10.4	2.4	12.9	162.9	58.6	221.6	7.9	73.5
February	117.6	31.9	149.5	1.6	11.1	3.4	14.6	164.1	57.9	222.0	8.9	73.9
March	117.0	34.0	151.0	1.0	8.6	5.5	14.0	165.0	57.4	222.5	8.5	74.2
April	114.7	34.9	149.6	0.7	7.3	3.9	11.2	160.8	62.2	223.0	7.0	72.1
May	117.0	35.6	152.6	0.6	7.2	2.9	10.1	162.7	60.9	223.5	6.2	72.8
June	115.4	34.4	149.8	0.4	8.9	2.8	11.6	161.4	62.6	224.1	7.2	72.0
July	114.2	36.0	150.2	0.5	8.7	2.8	11.5	161.7	62.3	223.9	7.1	72.2
August	113.7	37.4	151.1	0.7	8.8	2.5	11.3	162.3	62.0	224.4	6.9	72.3
September	114.1	38.0	152.1	1.2	8.5	3.9	12.4	164.6	60.2	224.8	7.5	73.2
October	115.9	36.8	152.7	0.9	7.7	3.5	11.2	164.0	61.3	225.2	6.9	72.8
November	113.6	39.2	152.8	0.5	7.9	2.7	10.6	163.4	62.3	225.6	6.5	72.4
December	117.3	38.3	155.6	1.3	9.2	2.9	12.0	167.6	58.5	226.1	7.2	74.1
1994 —												
January	117.1	33.9	151.0	1.5	11.7	3.1	14.8	165.8	60.7	226.5	8.9	73.2

TABLE 3. LABOUR FORCE STATUS OF CIVILIAN POPULATION AGED 15 AND OVER  
DIFFERENCE ('000), 1991 CENSUS-BASED MINUS 1986 CENSUS-BASED DATA  
AUSTRALIAN CAPITAL TERRITORY

Month	Employed		Unemployed					Labour force	Not in labour force	Civilian population aged 15 and over	Unemployment rate —percentage points—	Participation rate
	Full-time workers	Part-time workers	Total	Looking for full-time work		Looking for part-time work —'000—						
				Aged 15-19 looking for first job	Total							
				Total	Labour force	Not in labour force	Civilian population aged 15 and over					
1989 —												
January	-2.2	-0.2	-2.4	..	-0.2	..	-0.2	-2.5	0.4	-2.1	..	-0.5
February	-2.2	-0.1	-2.3	..	-0.2	..	-0.2	-2.5	0.3	-2.1	..	-0.5
March	-1.9	-0.2	-2.1	..	-0.2	..	-0.2	-2.3	0.2	-2.1	..	-0.4
April	-2.0	-0.3	-2.3	..	-0.2	-0.1	-0.2	-2.6	0.3	-2.3	-0.1	-0.4
May	-2.1	-0.4	-2.5	..	-0.2	..	-0.2	-2.7	0.2	-2.5	..	-0.4
June	-2.3	-0.4	-2.8	..	-0.2	..	-0.1	-2.9	0.2	-2.7	..	-0.4
July	-2.6	-0.2	-2.8	..	-0.2	..	-0.3	-3.1	0.3	-2.8	-0.1	-0.5
August	-2.7	-0.4	-3.1	..	-0.1	..	-0.1	-3.3	0.4	-2.8	..	-0.6
September	-2.9	-0.3	-3.3	..	-0.3	..	-0.3	-3.5	0.6	-2.9	-0.1	-0.6
October	-2.9	-0.4	-3.3	..	-0.2	..	-0.1	-3.5	0.5	-3.0	..	-0.6
November	-3.3	-0.2	-3.5	..	-0.2	..	-0.1	-3.6	0.5	-3.1	..	-0.6
December	-3.4	-0.1	-3.5	..	-0.4	0.1	-0.3	-3.8	0.6	-3.2	-0.1	-0.7
1990 —												
January	-3.5	-0.1	-3.6	0.1	-0.3	..	-0.4	-4.0	0.7	-3.2	-0.1	-0.8
February	-3.5	-0.2	-3.7	..	-0.2	..	-0.2	-3.9	0.6	-3.3	..	-0.7
March	-3.5	-0.3	-3.8	..	-0.2	..	-0.2	-3.9	0.6	-3.3	0.1	-0.7
April	-3.5	-0.2	-3.8	..	-0.2	..	-0.2	-4.0	0.7	-3.3	..	-0.8
May	-3.6	-0.2	-3.8	..	-0.2	..	-0.2	-4.0	0.8	-3.2	..	-0.8
June	-3.5	-0.1	-3.5	..	-0.3	..	-0.3	-3.8	0.6	-3.2	-0.1	-0.7
July	-3.8	..	-3.8	..	-0.3	..	-0.3	-4.1	0.8	-3.3	..	-0.8
August	-3.7	-0.1	-3.8	..	-0.3	..	-0.3	-4.1	0.6	-3.5	-0.1	-0.7
September	-3.8	..	-3.8	..	-0.1	..	-0.1	-3.9	0.3	-3.6	..	-0.6
October	-3.8	-0.1	-3.9	..	-0.2	..	-0.2	-4.1	0.5	-3.6	..	-0.7
November	-3.9	..	-3.9	..	-0.3	..	-0.3	-4.2	0.5	-3.7	..	-0.7
December	-4.2	0.1	-4.1	0.1	-0.3	0.1	-0.3	-4.4	0.7	-3.7	..	-0.8
1991 —												
January	-4.4	..	-4.4	0.1	-0.4	0.1	-0.3	-4.7	0.7	-4.0	..	-0.8
February	-4.4	..	-4.5	..	-0.5	..	-0.4	-4.9	0.6	-4.3	..	-0.8
March	-4.6	-0.2	-4.8	..	-0.4	..	-0.3	-5.2	0.6	-4.6	..	-0.8
April	-4.8	-0.3	-5.1	..	-0.4	..	-0.4	-5.5	0.7	-4.8	..	-0.9
May	-4.9	-0.3	-5.2	..	-0.5	..	-0.4	-5.6	0.6	-5.0	-0.1	-0.9
June	-5.4	-0.4	-5.8	..	-0.3	0.1	-0.2	-6.0	0.8	-5.3	0.1	-1.0
July	-5.7	-0.2	-5.9	..	-0.4	0.1	-0.3	-6.2	0.8	-5.4	0.1	-1.0
August	-5.5	-0.5	-6.0	..	-0.3	..	-0.3	-6.3	0.6	-5.7	..	-1.0
September	-5.7	-0.4	-6.0	..	-0.5	..	-0.5	-6.6	0.6	-6.0	-0.1	-1.0
October	-5.5	-0.4	-6.0	..	-0.4	-0.1	-0.5	-6.4	0.3	-6.1	..	-0.9
November	-5.7	-0.7	-6.4	..	-0.4	..	-0.4	-6.8	0.4	-6.3	..	-1.0
December	-6.1	-0.4	-6.5	..	-0.4	..	-0.4	-6.8	0.4	-6.5	0.1	-1.0
1992 —												
January	-5.8	-0.3	-6.1	..	-0.4	-0.1	-0.5	-6.6	0.1	-6.5	..	-0.9
February	-5.9	-0.5	-6.4	0.1	-0.4	..	-0.4	-6.8	0.3	-6.5	0.1	-0.9
March	-6.1	-0.4	-6.5	..	-0.6	..	-0.6	-7.1	0.6	-6.5	..	-1.1
April	-6.2	-0.5	-6.7	..	-0.5	..	-0.5	-7.2	0.6	-6.6	..	-1.1
May	-6.1	-0.6	-6.7	..	-0.5	..	-0.4	-7.1	0.4	-6.7	..	-1.1
June	-6.4	-0.8	-7.2	..	-0.3	..	-0.3	-7.5	0.6	-6.8	0.2	-1.2
July	-6.5	-0.7	-7.3	..	-0.5	..	-0.5	-7.7	0.6	-7.2	0.1	-1.1
August	-6.6	-0.8	-7.4	..	-0.3	-0.1	-0.4	-7.8	0.4	-7.4	0.1	-1.1
September	-6.7	-0.8	-7.5	0.1	-0.4	..	-0.4	-7.9	0.2	-7.8	0.1	-1.0
October	-6.7	-0.7	-7.4	..	-0.3	..	-0.3	-7.8	0.1	-7.6	0.1	-1.0
November	-6.7	-0.7	-7.3	0.1	-0.2	..	-0.3	-7.6	0.1	-7.5	0.1	-0.9
December	-6.7	-0.5	-7.2	0.1	-0.2	..	-0.2	-7.4	0.1	-7.3	0.1	-0.9
1993 —												
January	-6.7	-0.3	-7.0	0.1	-0.5	..	-0.5	-7.5	0.2	-7.3	0.1	-0.9
February	-6.8	-0.3	-7.1	..	-0.5	..	-0.5	-7.6	0.4	-7.3	0.1	-1.0
March	-6.7	-0.3	-7.0	..	-0.3	..	-0.3	-7.4	0.1	-7.3	0.2	-0.9
April	-6.6	-0.4	-7.0	..	-0.3	..	-0.3	-7.3	-0.1	-7.4	0.1	-0.8
May	-6.7	-0.4	-7.0	..	-0.3	..	-0.4	-7.4	-0.1	-7.5	0.1	-0.8
June	-6.7	-0.4	-7.2	..	-0.4	..	-0.4	-7.5	-0.1	-7.6	0.1	-0.9
July	-6.9	-0.4	-7.3	..	-0.3	..	-0.3	-7.7	-0.1	-7.8	0.1	-0.9
August	-7.0	-0.5	-7.5	..	-0.4	0.1	-0.3	-7.8	-0.1	-7.9	0.1	-0.9
September	-6.9	-0.7	-7.6	0.1	-0.3	..	-0.3	-7.9	-0.1	-8.0	0.1	-0.9
October	-7.3	-0.5	-7.8	..	-0.4	..	-0.4	-8.2	..	-8.2	0.1	-1.0
November	-7.3	-0.7	-8.0	..	-0.5	..	-0.4	-8.4	..	-8.5	0.1	-1.0
December	-7.6	-0.6	-8.3	0.1	-0.5	..	-0.4	-8.7	..	-8.7	0.1	-1.0
1994 —												
January	-7.5	-0.6	-8.1	0.1	-0.6	..	-0.6	-8.7	..	-8.8	0.1	-1.0

TABLE 4. LABOUR FORCE STATUS OF CIVILIAN POPULATION AGED 15 AND OVER  
DIFFERENCE (Per cent), 1991 CENSUS-BASED MINUS 1986 CENSUS-BASED DATA  
AUSTRALIAN CAPITAL TERRITORY

Month	Employed			Unemployed				Labour force	Not in labour force	Civilian population aged 15 and over
	Full-time workers	Part-time workers	Total	Looking for full-time work		Looking for part-time work	Total			
				Aged 15-19 looking for first job	Total					
1989 —										
January	-2.0	-0.7	-1.8	-1.4	-3.0	0.6	-2.0	-1.8	0.6	-1.1
February	-1.9	-0.4	-1.6	-0.2	-3.8	..	-2.3	-1.7	0.6	-1.0
March	-1.7	-0.6	-1.5	0.3	-3.6	-1.1	-2.5	-1.5	0.4	-1.0
April	-1.9	-0.9	-1.6	-2.2	-3.3	-2.0	-2.7	-1.7	0.5	-1.1
May	-2.0	-1.0	-1.7	2.0	-3.6	-0.8	-2.6	-1.8	0.4	-1.2
June	-2.1	-1.3	-1.9	..	-3.7	0.8	-2.0	-1.9	0.4	-1.3
July	-2.3	-0.7	-2.0	3.7	-4.1	-1.5	-3.1	-2.0	0.6	-1.4
August	-2.4	-1.3	-2.2	4.6	-2.5	-1.2	-2.2	-2.2	0.8	-1.4
September	-2.6	-1.0	-2.2	3.2	-5.4	-0.8	-3.4	-2.3	1.1	-1.4
October	-2.6	-1.2	-2.3	-2.1	-5.3	0.6	-2.1	-2.3	0.8	-1.5
November	-2.8	-0.6	-2.4	4.2	-3.8	1.7	-2.0	-2.4	1.0	-1.5
December	-2.8	-0.2	-2.3	2.9	-5.9	2.8	-3.6	-2.4	1.2	-1.5
1990 —										
January	-2.9	-0.3	-2.5	4.1	-4.4	-1.8	-3.7	-2.6	1.3	-1.6
February	-3.0	-0.7	-2.5	4.3	-3.5	-0.1	-2.1	-2.5	1.2	-1.6
March	-3.0	-0.9	-2.6	4.2	-2.9	0.3	-1.6	-2.5	1.2	-1.6
April	-3.0	-0.8	-2.6	3.4	-4.6	0.4	-2.6	-2.6	1.3	-1.5
May	-3.1	-0.5	-2.5	3.6	-4.7	-0.8	-2.7	-2.5	1.4	-1.5
June	-3.0	-0.3	-2.4	4.2	-4.6	-0.9	-3.6	-2.5	1.1	-1.5
July	-3.1	-0.1	-2.6	..	-4.6	-0.3	-3.5	-2.6	1.4	-1.6
August	-3.1	-0.3	-2.6	4.4	-5.3	-0.6	-4.0	-2.6	1.0	-1.6
September	-3.1	..	-2.5	5.5	-2.5	-1.7	-2.1	-2.5	0.6	-1.7
October	-3.2	-0.4	-2.6	5.4	-3.9	0.6	-2.3	-2.6	0.9	-1.7
November	-3.3	-0.1	-2.6	4.1	-4.5	2.2	-2.9	-2.7	0.9	-1.7
December	-3.4	0.2	-2.7	4.0	-3.8	3.5	-2.5	-2.7	1.2	-1.7
1991 —										
January	-3.5	..	-3.0	4.4	-3.8	2.4	-2.5	-2.9	1.2	-1.9
February	-3.6	-0.1	-3.0	3.6	-5.6	0.9	-3.6	-3.0	1.2	-2.0
March	-3.8	-0.6	-3.1	2.8	-5.7	1.1	-3.8	-3.2	1.1	-2.1
April	-4.0	-1.0	-3.4	3.2	-5.0	-0.2	-3.7	-3.4	1.3	-2.2
May	-4.1	-0.9	-3.5	4.4	-6.7	1.1	-4.5	-3.5	1.0	-2.3
June	-4.6	-1.3	-3.8	3.8	-4.9	1.8	-2.3	-3.8	1.4	-2.4
July	-4.7	-0.8	-3.9	5.0	-6.1	2.4	-2.8	-3.8	1.3	-2.5
August	-4.7	-1.5	-4.0	5.7	-4.8	-0.6	-3.2	-3.9	1.0	-2.6
September	-4.8	-1.1	-4.0	7.9	-8.3	-0.9	-5.2	-4.1	1.0	-2.7
October	-4.8	-1.3	-4.0	6.8	-7.3	-1.9	-4.9	-4.1	0.5	-2.8
November	-4.9	-1.9	-4.2	6.0	-7.1	..	-4.3	-4.2	0.7	-2.8
December	-5.1	-1.3	-4.3	5.1	-5.3	1.0	-3.0	-4.2	0.6	-2.9
1992 —										
January	-5.0	-1.0	-4.2	6.4	-4.6	-3.3	-4.3	-4.2	0.2	-2.9
February	-5.0	-1.5	-4.3	7.5	-3.7	0.4	-2.7	-4.1	0.5	-2.9
March	-5.2	-1.2	-4.3	7.7	-5.5	-1.0	-4.1	-4.3	1.0	-2.9
April	-5.4	-1.5	-4.5	7.9	-5.3	-0.9	-4.2	-4.5	1.0	-2.9
May	-5.3	-1.7	-4.4	4.7	-6.4	0.8	-4.3	-4.4	0.6	-3.0
June	-5.4	-2.4	-4.8	4.7	-4.7	0.8	-2.4	-4.6	1.0	-3.0
July	-5.5	-2.2	-4.8	6.2	-5.3	0.8	-3.4	-4.7	0.9	-3.2
August	-5.7	-2.3	-4.9	5.9	-4.3	-1.8	-3.3	-4.8	0.6	-3.3
September	-5.9	-2.0	-4.9	3.8	-4.3	-0.3	-3.2	-4.7	0.3	-3.4
October	-5.7	-1.9	-4.8	3.5	-4.0	-0.5	-2.8	-4.6	0.3	-3.3
November	-5.5	-1.8	-4.7	3.8	-3.1	-0.1	-2.3	-4.5	0.2	-3.3
December	-5.3	-1.4	-4.5	3.8	-2.4	-1.4	-2.2	-4.3	0.3	-3.2
1993 —										
January	-5.3	-1.0	-4.5	3.1	-4.3	..	-3.5	-4.4	0.4	-3.2
February	-5.5	-1.0	-4.5	3.5	-4.7	0.9	-3.4	-4.5	0.7	-3.2
March	-5.4	-0.9	-4.5	3.0	-3.4	-0.9	-2.4	-4.3	0.2	-3.2
April	-5.4	-1.0	-4.4	3.2	-4.0	-0.3	-2.7	-4.3	-0.2	-3.2
May	-5.4	-1.1	-4.4	3.2	-4.4	-0.9	-3.4	-4.4	-0.2	-3.3
June	-5.5	-1.3	-4.6	4.6	-4.0	-0.1	-3.1	-4.5	-0.2	-3.3
July	-5.7	-1.2	-4.7	5.1	-3.6	-0.2	-2.8	-4.5	-0.2	-3.4
August	-5.8	-1.4	-4.7	5.6	-4.1	3.3	-2.6	-4.6	-0.2	-3.4
September	-5.7	-1.8	-4.8	5.7	-3.8	0.1	-2.6	-4.6	-0.1	-3.4
October	-5.9	-1.4	-4.9	6.4	-5.4	0.9	-3.5	-4.8	..	-3.5
November	-6.1	-1.7	-5.0	7.3	-5.5	1.8	-3.7	-4.9	-0.1	-3.6
December	-6.1	-1.6	-5.0	6.3	-4.8	0.4	-3.6	-4.9	..	-3.7
1994 —										
January	-6.0	-1.8	-5.1	5.4	-4.8	-0.4	-3.9	-5.0	..	-3.7